



114 OLD COUNTRY ROAD
SUITE 100
MINEOLA
NEW YORK 11501
PHONE: (516) 512-7300

AERIAL SITE LOCATION MAP

PSEG-LI Overhead and Underground
Utility Relocation for the
NYS-112 Road Widening Project
Hamlet of Medford, Town of Brookhaven
Suffolk County, New York

Sources:
1. PSEG Long Island Utility Pole Data Set, 2017
2. NYSDEC Regulatory Freshwater Wetlands
for Suffolk County, 2013
3. Esri, StreetMap USA, 2012
4. NYDEC Imagery, 2016

Drawn By: EB/PDT

Scale: 1" = 100'

Project No. 01315.0602

Chk'd By: SS

Date: 4/10/2019

Figure No. 2 (1 of 14)



Legend

- Proposed Pole To Be Relocated
- Proposed Pole Installation
- Existing Pole To Remain In Place
- Proposed Pole To Be Replaced
- Work Span for OH Transmission/Distribution Relocations Replacements and Reconductoring



114 OLD COUNTRY ROAD
SUITE 100
MINEOLA
NEW YORK 11501
PHONE: (516) 512-7300

AERIAL SITE LOCATION MAP

PSEG-LI Overhead and Underground Utility Relocation for the NYS-112 Road Widening Project Hamlet of Medford, Town of Brookhaven Suffolk County, New York

Sources:
1. PSEG Long Island Utility Pole Data Set, 2017
2. NYSDEC Regulatory Freshwater Wetlands
for Suffolk County, 2013
3. Esri, StreetMap USA, 2012
4. NYDEC Imagery, 2016

Drawn By: EB/PDT

Scale: 1" = 100'

Project No. 01315.0602

Chk'd By: SS

Date: 4/10/2019

Figure No. 2 (2 of 14)

Path: P:\01315\0602\DWGs\Y-GIS\Maps\PoleRelocation\Fig02_Existing&ProposedPoles_20190410_11.mxd



Legend

- Proposed Pole To Be Relocated
- ▲ Existing Pole To Remain In Place
- ▲ Proposed Pole To Be Replaced
- Work Span for OH Transmission/Distribution Relocations Replacements and Reconductoring
- Work Span for OH Distribution Relocations Replacements and Reconductoring



114 OLD COUNTRY ROAD
SUITE 100
MINEOLA
NEW YORK 11501
PHONE: (516) 512-7300

AERIAL SITE LOCATION MAP

PSEG-LI Overhead and Underground
Utility Relocation for the
NYS-112 Road Widening Project
Hamlet of Medford, Town of Brookhaven
Suffolk County, New York

Sources:

1. PSEG Long Island Utility Pole Data Set, 2017
2. NYSDEC Regulatory Freshwater Wetlands for Suffolk County, 2013
3. Esri, StreetMap USA, 2012
4. NYDEC Imagery, 2016

Drawn By: EB/PDT

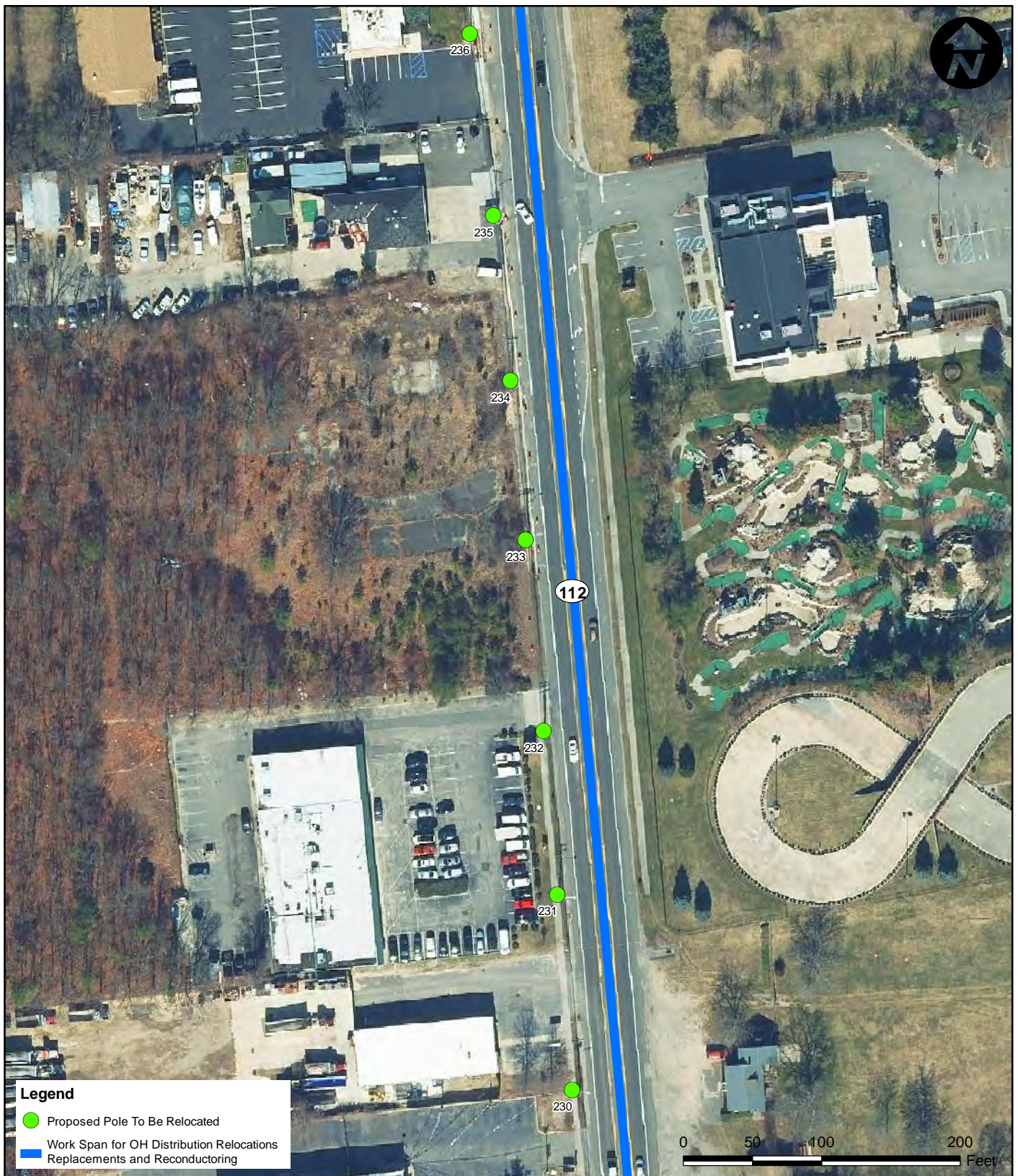
Scale: 1" = 100'

Project No. 01315.0602

Chk'd By: SS

Date: 4/10/2019

Figure No. 2 (3 of 14)



Legend

- Proposed Pole To Be Relocated
- Work Span for OH Distribution Relocations Replacements and Reconductoring



114 OLD COUNTRY ROAD
SUITE 100
MINEOLA
NEW YORK 11501
PHONE: (516) 512-7300

AERIAL SITE LOCATION MAP

PSEG-LI Overhead and Underground
Utility Relocation for the
NYS-112 Road Widening Project
Hamlet of Medford, Town of Brookhaven
Suffolk County, New York

Sources:
1. PSEG Long Island Utility Pole Data Set, 2017
2. NYSDEC Regulatory Freshwater Wetlands
for Suffolk County, 2013
3. Esri, StreetMap USA, 2012
4. NYDEC Imagery, 2016

Drawn By: EB/PDT

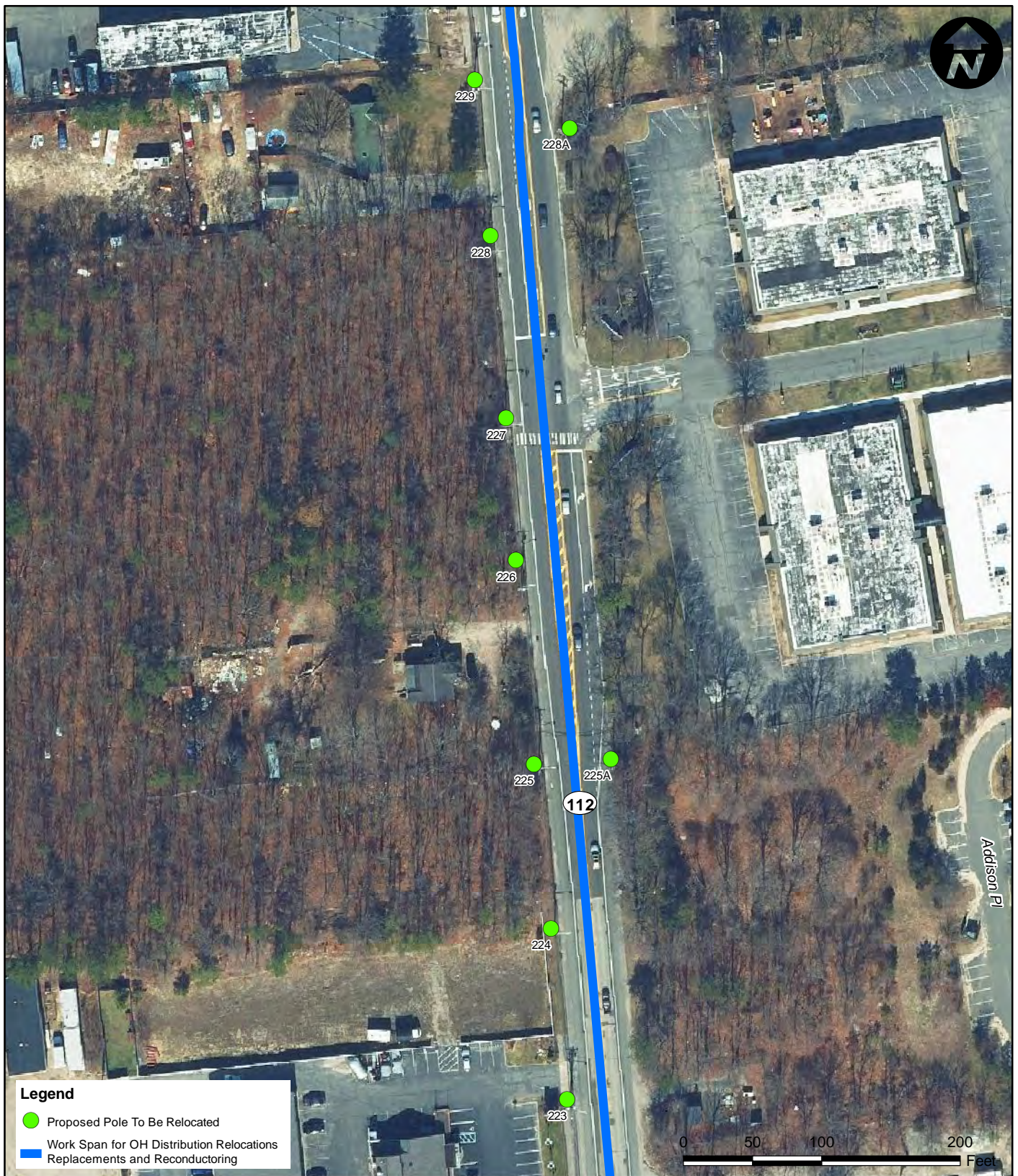
Scale: 1" = 100'

Project No. 01315.0602

Chk'd By: SS

Date: 4/10/2019

Figure No. 2 (4 of 14)



Legend

- Proposed Pole To Be Relocated
- Work Span for OH Distribution Relocations Replacements and Reconductoring



114 OLD COUNTRY ROAD
SUITE 100
MINEOLA
NEW YORK 11501
PHONE: (516) 512-7300

AERIAL SITE LOCATION MAP

PSEG-LI Overhead and Underground Utility Relocation for the NYS-112 Road Widening Project Hamlet of Medford, Town of Brookhaven Suffolk County, New York

Sources:

1. PSEG Long Island Utility Pole Data Set, 2017
2. NYSDEC Regulatory Freshwater Wetlands for Suffolk County, 2013
3. Esri, StreetMap USA, 2012
4. NYDEC Imagery, 2016

Drawn By: EB/PDT

Scale: 1" = 100'

Project No. 01315.0602

Chk'd By: SS

Date: 4/10/2019

Figure No. 2 (5 of 14)



Legend

- Proposed Pole To Be Relocated
- Existing Pole To Remain In Place
- Work Span for OH Distribution Relocations Replacements and Reconductoring



114 OLD COUNTRY ROAD
SUITE 100
MINEOLA
NEW YORK 11501
PHONE: (516) 512-7300

AERIAL SITE LOCATION MAP

PSEG-LI Overhead and Underground
Utility Relocation for the
NYS-112 Road Widening Project
Hamlet of Medford, Town of Brookhaven
Suffolk County, New York

Sources:
1. PSEG Long Island Utility Pole Data Set, 2017
2. NYSDEC Regulatory Freshwater Wetlands
for Suffolk County, 2013
3. Esri, StreetMap USA, 2012
4. NYDEC Imagery, 2016

Drawn By: EB/PDT

Scale: 1" = 100'

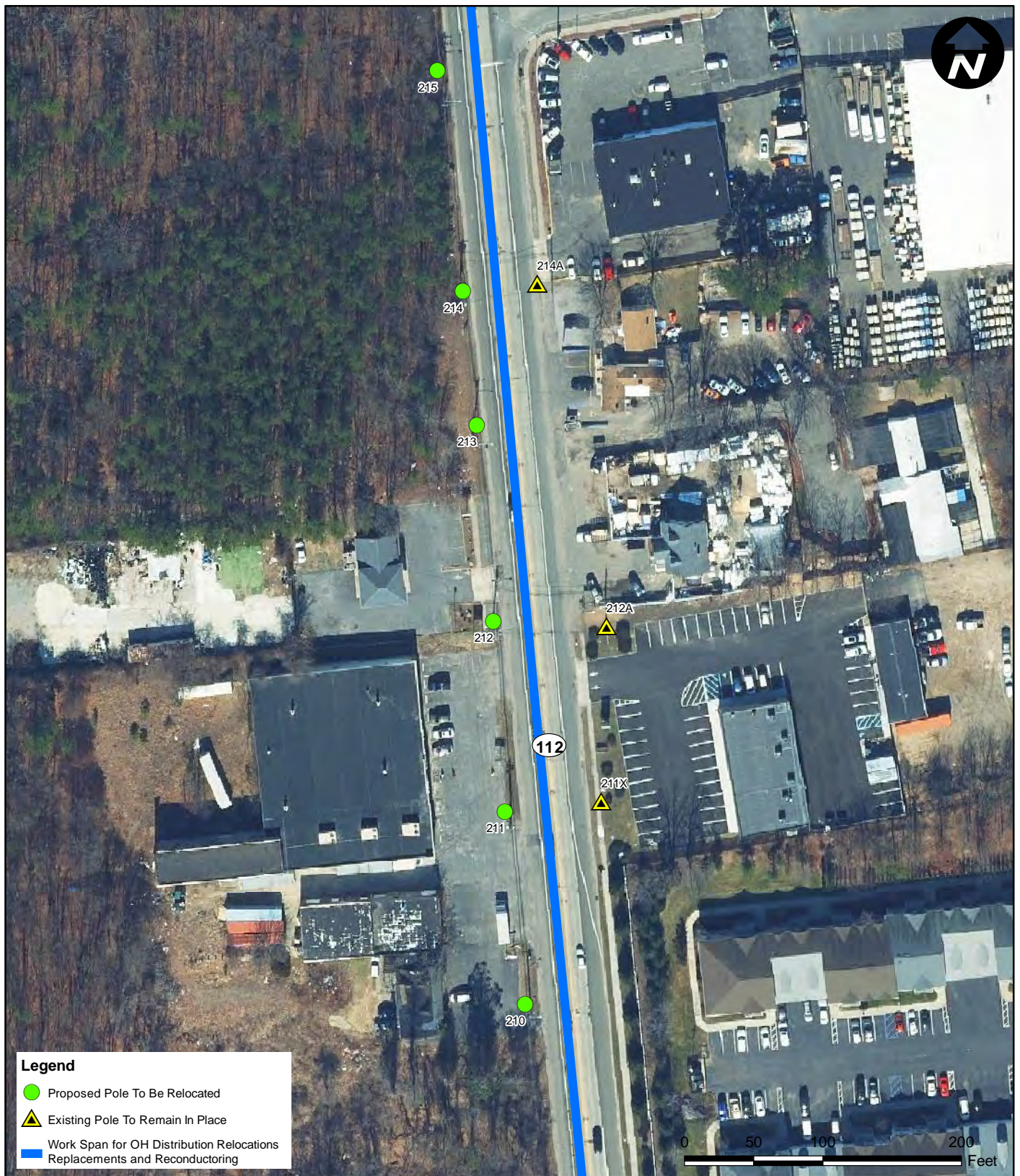
Project No. 01315.0602

Chk'd By: SS

Date: 4/10/2019

Figure No. 2 (6 of 14)

Path: P:\01315\0602\DWGs\Y-GIS\Maps\PoleRelocation\Fig02_Existing&ProposedPoles_20190410_11.mxd



Legend

- Proposed Pole To Be Relocated
- ▲ Existing Pole To Remain In Place
- Work Span for OH Distribution Relocations Replacements and Reconductoring



114 OLD COUNTRY ROAD
SUITE 100
MINEOLA
NEW YORK 11501
PHONE: (516) 512-7300

AERIAL SITE LOCATION MAP

PSEG-LI Overhead and Underground
Utility Relocation for the
NYS-112 Road Widening Project
Hamlet of Medford, Town of Brookhaven
Suffolk County, New York

Sources:
1. PSEG Long Island Utility Pole Data Set, 2017
2. NYSDEC Regulatory Freshwater Wetlands
for Suffolk County, 2013
3. Esri, StreetMap USA, 2012
4. NYDEC Imagery, 2016

Drawn By: EB/PDT

Scale: 1" = 100'

Project No. 01315.0602

Chk'd By: SS

Date: 4/10/2019

Figure No. 2 (7 of 14)



Legend

- Proposed Pole To Be Relocated
- ▲ Existing Pole To Remain In Place
- Work Span for OH Distribution Relocations Replacements and Reconducting

Sources:

1. PSEG Long Island Utility Pole Data Set, 2017
2. NYSDEC Regulatory Freshwater Wetlands for Suffolk County, 2013
3. Esri, StreetMap USA, 2012
4. NYDEC Imagery, 2016



114 OLD COUNTRY ROAD
SUITE 100
MINEOLA
NEW YORK 11501
PHONE: (516) 512-7300

AERIAL SITE LOCATION MAP

PSEG-LI Overhead and Underground
Utility Relocation for the
NYS-112 Road Widening Project
Hamlet of Medford, Town of Brookhaven
Suffolk County, New York

Drawn By: EB/PDT

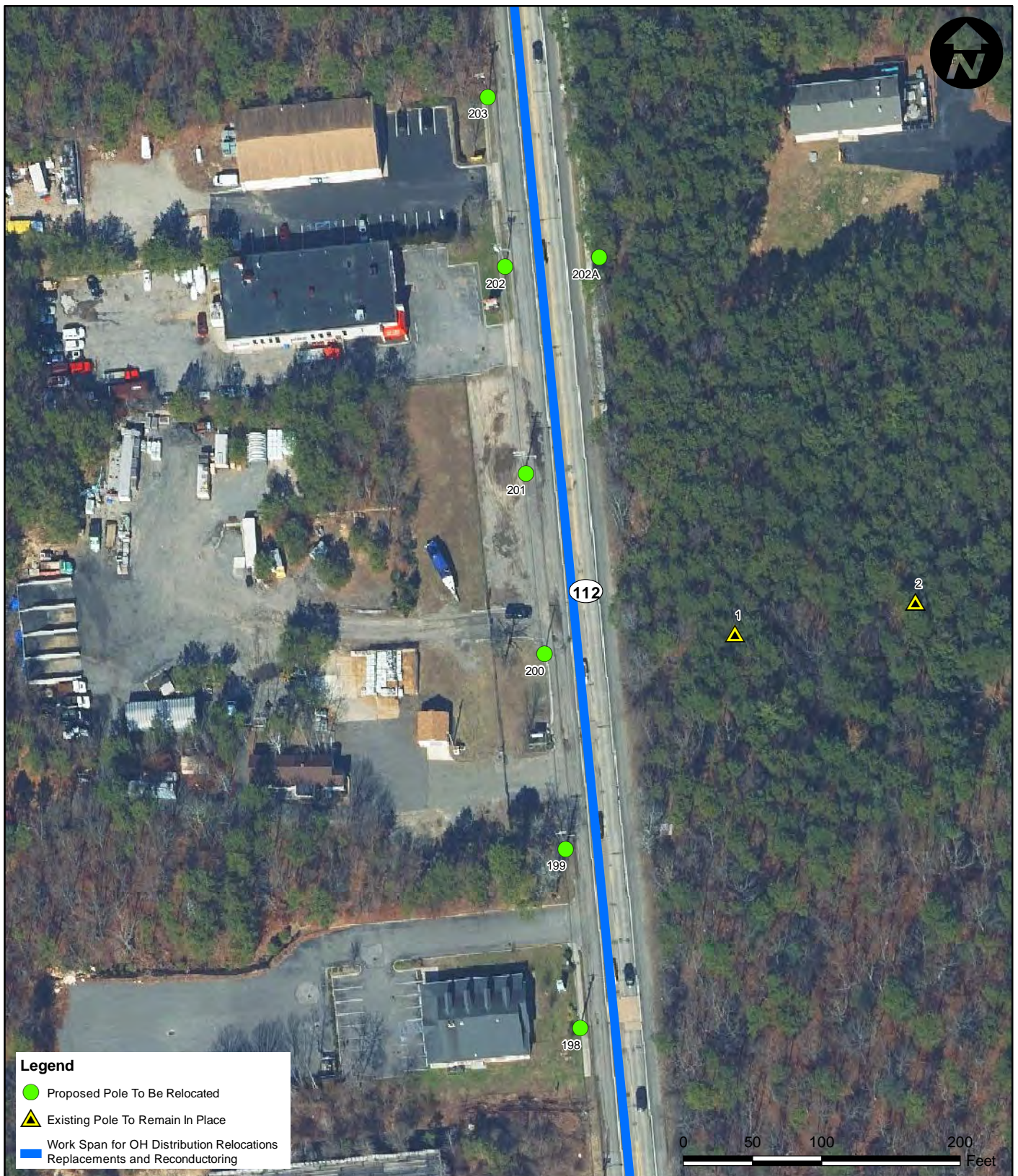
Scale: 1" = 100'

Project No. 01315.0602

Chk'd By: SS

Date: 4/10/2019

Figure No. 2 (8 of 14)



Legend

- Proposed Pole To Be Relocated
- ▲ Existing Pole To Remain In Place
- Work Span for OH Distribution Relocations Replacements and Reconductoring



114 OLD COUNTRY ROAD
SUITE 100
MINEOLA
NEW YORK 11501
PHONE: (516) 512-7300

AERIAL SITE LOCATION MAP

PSEG-LI Overhead and Underground
Utility Relocation for the
NYS-112 Road Widening Project
Hamlet of Medford, Town of Brookhaven
Suffolk County, New York

Sources:
1. PSEG Long Island Utility Pole Data Set, 2017
2. NYSDEC Regulatory Freshwater Wetlands
for Suffolk County, 2013
3. Esri, StreetMap USA, 2012
4. NYDEC Imagery, 2016

Drawn By: EB/PDT

Scale: 1" = 100'

Project No. 01315.0602

Chk'd By: SS

Date: 4/10/2019

Figure No. 2 (9 of 14)

Path: P:\01315\0602\DWGs\GIS\Maps\PoleRelocation\Fig02_Existing&ProposedPoles_20190410_11.mxd



Legend

- Proposed Pole To Be Relocated
- Work Span for OH Distribution Relocations
Replacements and Reconducting



114 OLD COUNTRY ROAD
SUITE 100
MINEOLA
NEW YORK 11501
PHONE: (516) 512-7300

AERIAL SITE LOCATION MAP

PSEG-LI Overhead and Underground
Utility Relocation for the
NYS-112 Road Widening Project
Hamlet of Medford, Town of Brookhaven
Suffolk County, New York

Sources:
1. PSEG Long Island Utility Pole Data Set, 2017
2. NYSDEC Regulatory Freshwater Wetlands
for Suffolk County, 2013
3. Esri, StreetMap USA, 2012
4. NYDEC Imagery, 2016

Drawn By: EB/PDT

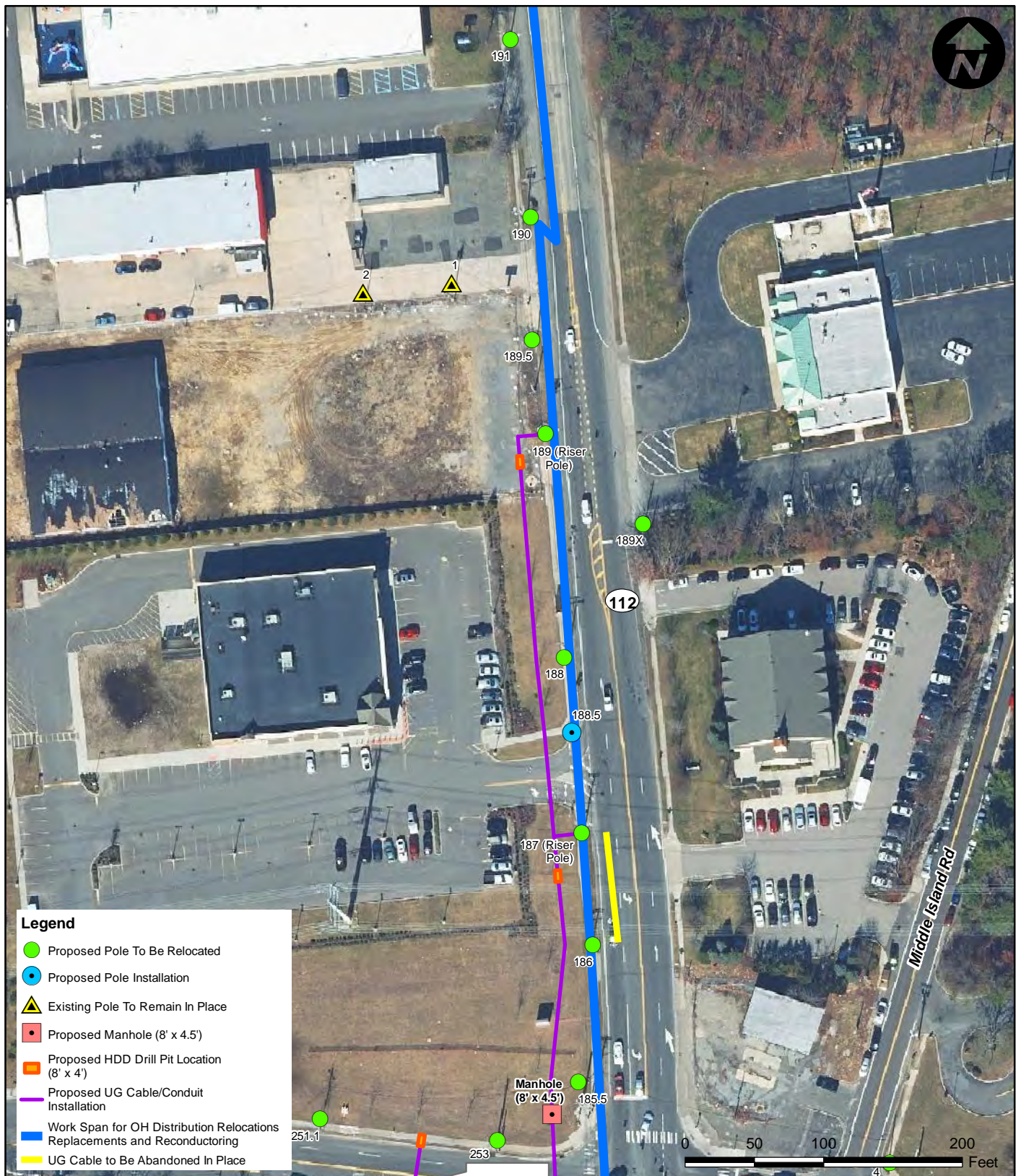
Scale: 1" = 100'

Project No. 01315.0602

Chk'd By: SS

Date: 4/10/2019

Figure No. 2 (10 of 14)



Legend

- Proposed Pole To Be Relocated
- Proposed Pole Installation
- Existing Pole To Remain In Place
- Proposed Manhole (8' x 4.5')
- Proposed HDD Drill Pit Location (8' x 4')
- Proposed UG Cable/Conduit Installation
- Work Span for OH Distribution Relocations Replacements and Reconductoring
- UG Cable to Be Abandoned In Place



114 OLD COUNTRY ROAD
SUITE 100
MINEOLA
NEW YORK 11501
PHONE: (516) 512-7300

AERIAL SITE LOCATION MAP

PSEG-LI Overhead and Underground
Utility Relocation for the
NYS-112 Road Widening Project
Hamlet of Medford, Town of Brookhaven
Suffolk County, New York

Sources:

1. PSEG Long Island Utility Pole Data Set, 2017
2. NYSDEC Regulatory Freshwater Wetlands for Suffolk County, 2013
3. Esri, StreetMap USA, 2012
4. NYDEC Imagery, 2016

Drawn By: EB/PDT

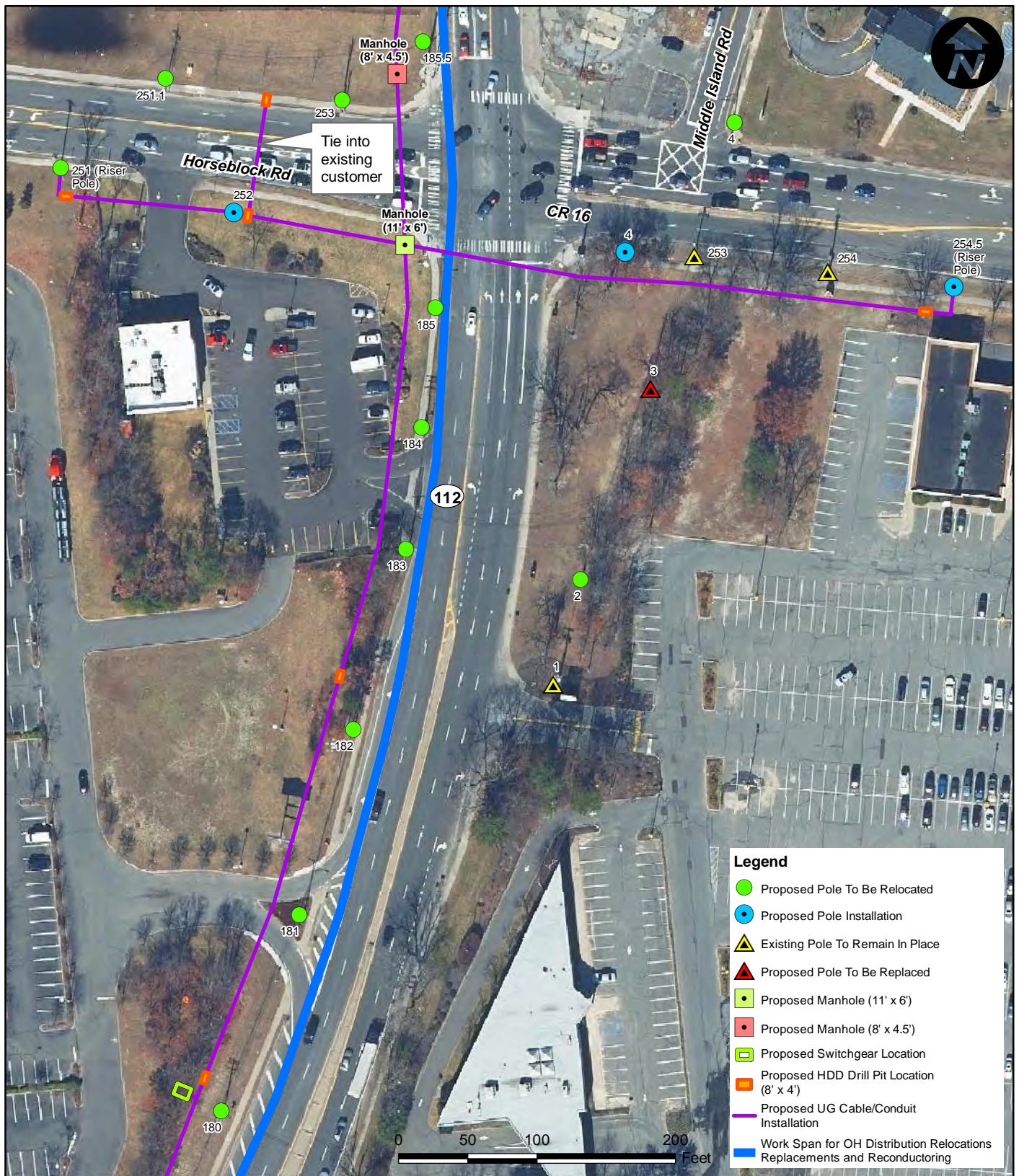
Scale: 1" = 100'

Project No. 01315.0602

Chk'd By: SS

Date: 4/10/2019

Figure No. 2 (11 of 14)



114 OLD COUNTRY ROAD
SUITE 100
MINEOLA
NEW YORK 11501
PHONE: (516) 512-7300

AERIAL SITE LOCATION MAP

PSEG-LI Overhead and Underground
Utility Relocation for the
NYS-112 Road Widening Project
Hamlet of Medford, Town of Brookhaven
Suffolk County, New York

Sources:

1. PSEG Long Island Utility Pole Data Set, 2017
2. NYSDEC Regulatory Freshwater Wetlands
for Suffolk County, 2013
3. Esri, StreetMap USA, 2012
4. NYDEC Imagery, 2016

Drawn By: EB/PDT

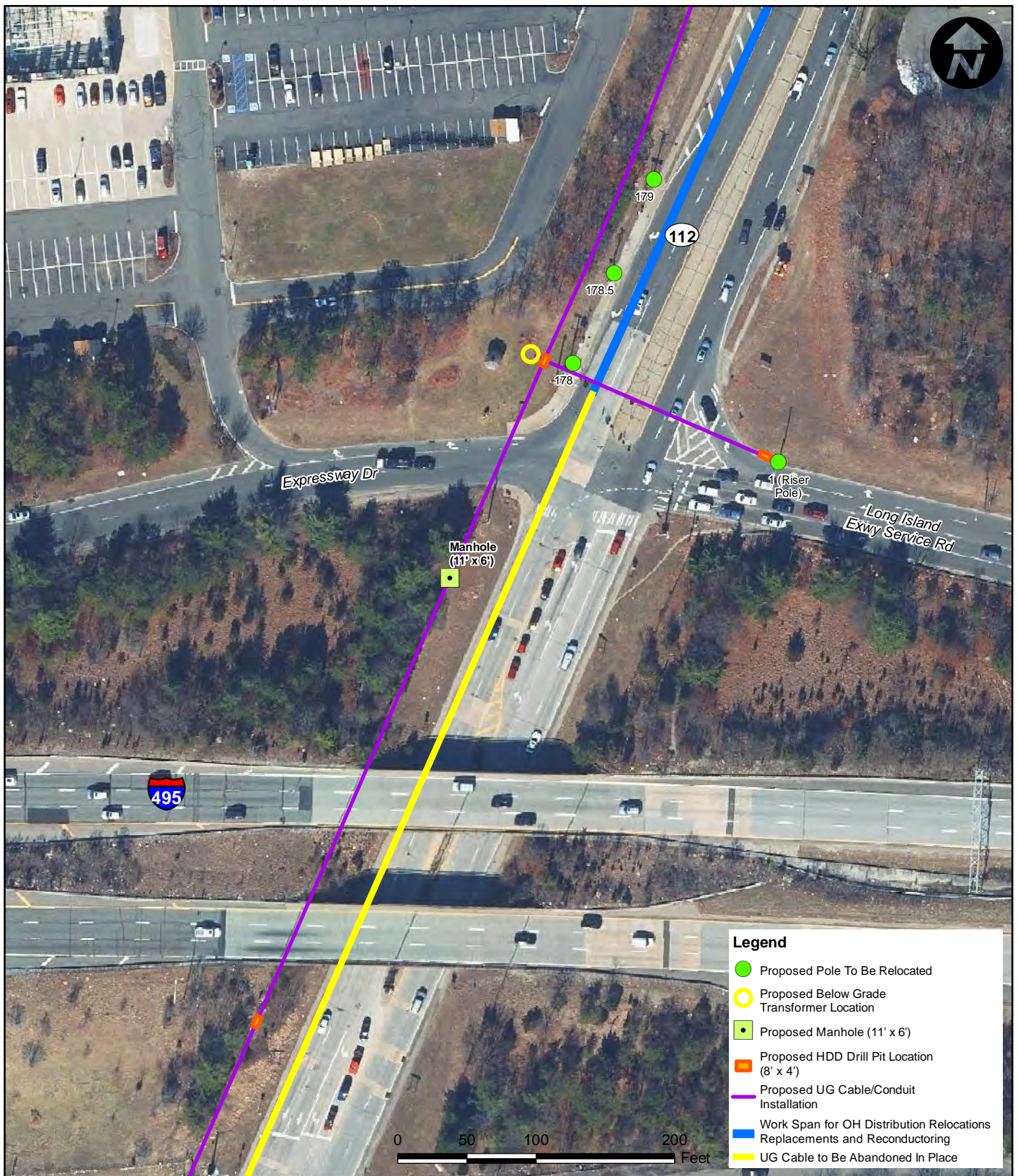
Scale: 1" = 100'

Project No. 01315.0602

Chk'd By: SS

Date: 4/10/2019

Figure No. 2 (12 of 14)



- Legend**
- Proposed Pole To Be Relocated
 - Proposed Below Grade Transformer Location
 - Proposed Manhole (11' x 6')
 - Proposed HDD Drill Pit Location (8' x 4')
 - Proposed UG Cable/Conduit Installation
 - Work Span for OH Distribution Relocations
 - Replacements and Reconductoring
 - UG Cable to Be Abandoned In Place



114 OLD COUNTRY ROAD
SUITE 100
MINEOLA
NEW YORK 11501
PHONE: (516) 512-7300

AERIAL SITE LOCATION MAP

PSEG-LI Overhead and Underground
Utility Relocation for the
NYS-112 Road Widening Project
Hamlet of Medford, Town of Brookhaven
Suffolk County, New York

Sources:
1. PSEG Long Island Utility Pole Data Set, 2017
2. NYSDEC Regulatory Freshwater Wetlands
for Suffolk County, 2013
3. Esri, StreetMap USA, 2012
4. NYDEC Imagery, 2016

Drawn By: EB/PDT

Scale: 1" = 100'

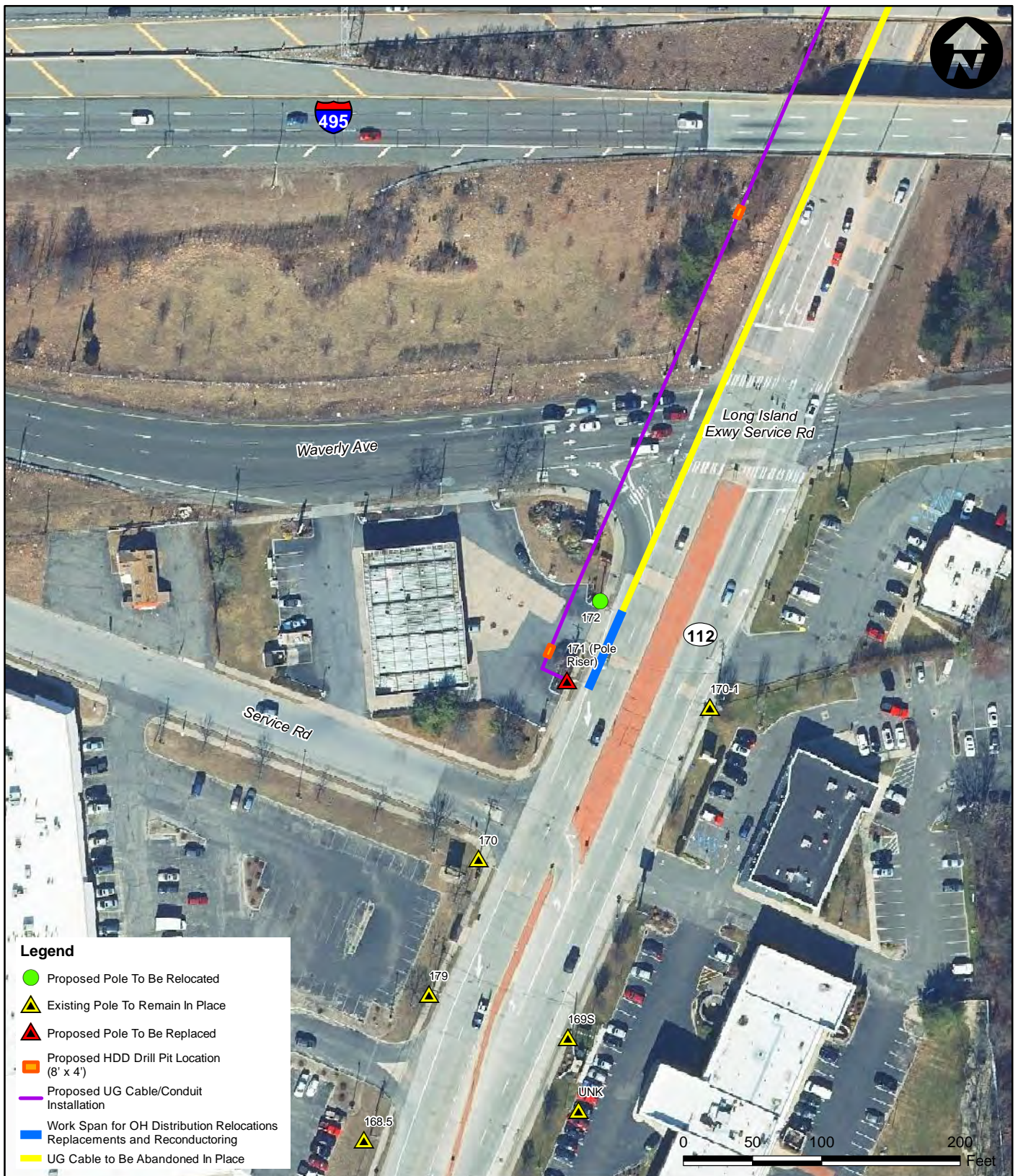
Project No. 01315.0602

Chk'd By: SS

Date: 4/10/2019

Figure No. 2 (13 of 14)

Path: P:\01315\0602\DWGs\Y-GIS\Maps\PoleRelocation\Fig02_Existing&ProposedPoles_20190410_11.mxd



Legend

- Proposed Pole To Be Relocated
- Existing Pole To Remain In Place
- Proposed Pole To Be Replaced
- Proposed HDD Drill Pit Location (8' x 4')
- Proposed UG Cable/Conduit Installation
- Work Span for OH Distribution Relocations Replacements and Reconductoring
- UG Cable to Be Abandoned In Place



114 OLD COUNTRY ROAD
SUITE 100
MINEOLA
NEW YORK 11501
PHONE: (516) 512-7300

AERIAL SITE LOCATION MAP

PSEG-LI Overhead and Underground
Utility Relocation for the
NYS-112 Road Widening Project
Hamlet of Medford, Town of Brookhaven
Suffolk County, New York

Sources:
1. PSEG Long Island Utility Pole Data Set, 2017
2. NYSDEC Regulatory Freshwater Wetlands
for Suffolk County, 2013
3. Esri, StreetMap USA, 2012
4. NYDEC Imagery, 2016

Drawn By: EB/PDT

Scale: 1" = 100'

Project No. 01315.0602

Chk'd By: SS

Date: 4/10/2019

Figure No. 2 (14 of 14)

Path: P:\01315\0602\DWGs\Y-GIS\Maps\PoleRelocation\Fig02_Existing&ProposedPoles_20190410_11.mxd