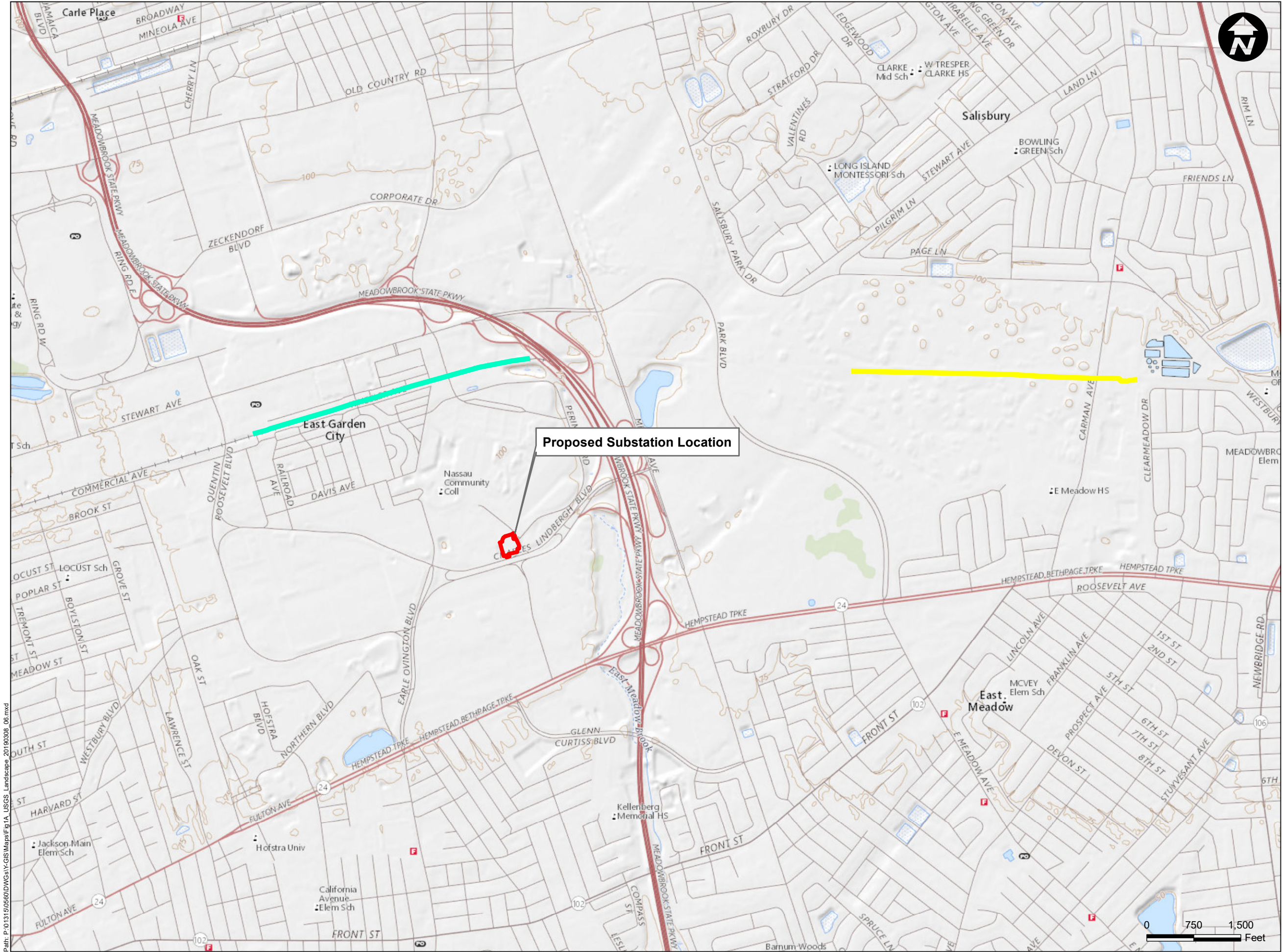


## **APPENDIX C**

### **VISUAL RESOURCES ASSESSMENT SUPPORTING DOCUMENTATION**

## **Visual Resources Assessment Figures**





Legend

Section A OH Transmission Line and Structure Modifications

Section B OH Transmission Line and Structure Modifications

Proposed Substation Location

Sources:  
USGS, US Topo, The National Map  
Freeport Quad, 2017  
STATE PLANE COORDINATES  
E 1098433  
N 204335



114 OLD COUNTRY ROAD  
SUITE 100  
MINEOLA, NEW YORK 11501  
PHONE: (516) 512-7300  
CERTIFICATE OF AUTHORIZATION NO. 24GA28032700

ALL DIMENSIONS MUST BE VERIFIED BY THE CONTRACTOR. NOTIFY PAULUS, SOKOLOWSKI AND SARTOR, LLC, OF ANY CONFLICTS, ERRORS, AMBIGUITIES OR DISCREPANCIES IN THE CONTRACT DRAWINGS OR SPECIFICATIONS BEFORE PROCEEDING WITH CONSTRUCTION.

ALL DIMENSIONS SHALL BE AS NOTED IN WORDS OR NUMBERS ON THE CONTRACT DRAWINGS. DO NOT SCALE THE DRAWINGS TO DETERMINE DIMENSIONS.

THESE CONTRACT DRAWINGS CONTAIN DATA INTENDED SPECIFICALLY FOR THE NOTED PROJECT AND CLIENT. THEY ARE NOT INTENDED FOR USE ON EXTENSIONS OF THIS PROJECT OR FOR REUSE ON ANY OTHER PROJECT.

THE COPYING AND/OR MODIFICATION OF THIS DOCUMENT OR ANY PORTION THEREOF WITHOUT THE WRITTEN PERMISSION OF PAULUS, SOKOLOWSKI AND SARTOR, LLC, IS PROHIBITED.

UNLESS THESE DRAWINGS ARE SPECIFICALLY DESIGNATED AS "CONSTRUCTION ISSUE", THESE DRAWINGS SHALL NOT BE USED FOR CONSTRUCTION OR IMPROVEMENTS DEPICTED HEREIN. CONTRACTORS SHALL NOTIFY THE DESIGN ENGINEER TO OBTAIN CONSTRUCTION DOCUMENTS.

COPYRIGHT 2019 PAULUS, SOKOLOWSKI, AND SARTOR LLC. - ALL RIGHTS RESERVED.

PROJECT TITLE

Lindbergh Substation and  
Associated Transmission Line  
Replacement and Reconductoring,  
Distribution Feeder Installation, and  
Conversion and Reconductoring Project  
Town of Hempstead  
Nassau County, New York

SHEET TITLE

USGS SITE LOCATION MAP

PROJ. NO. 01315.0560

DATE 3/8/2019

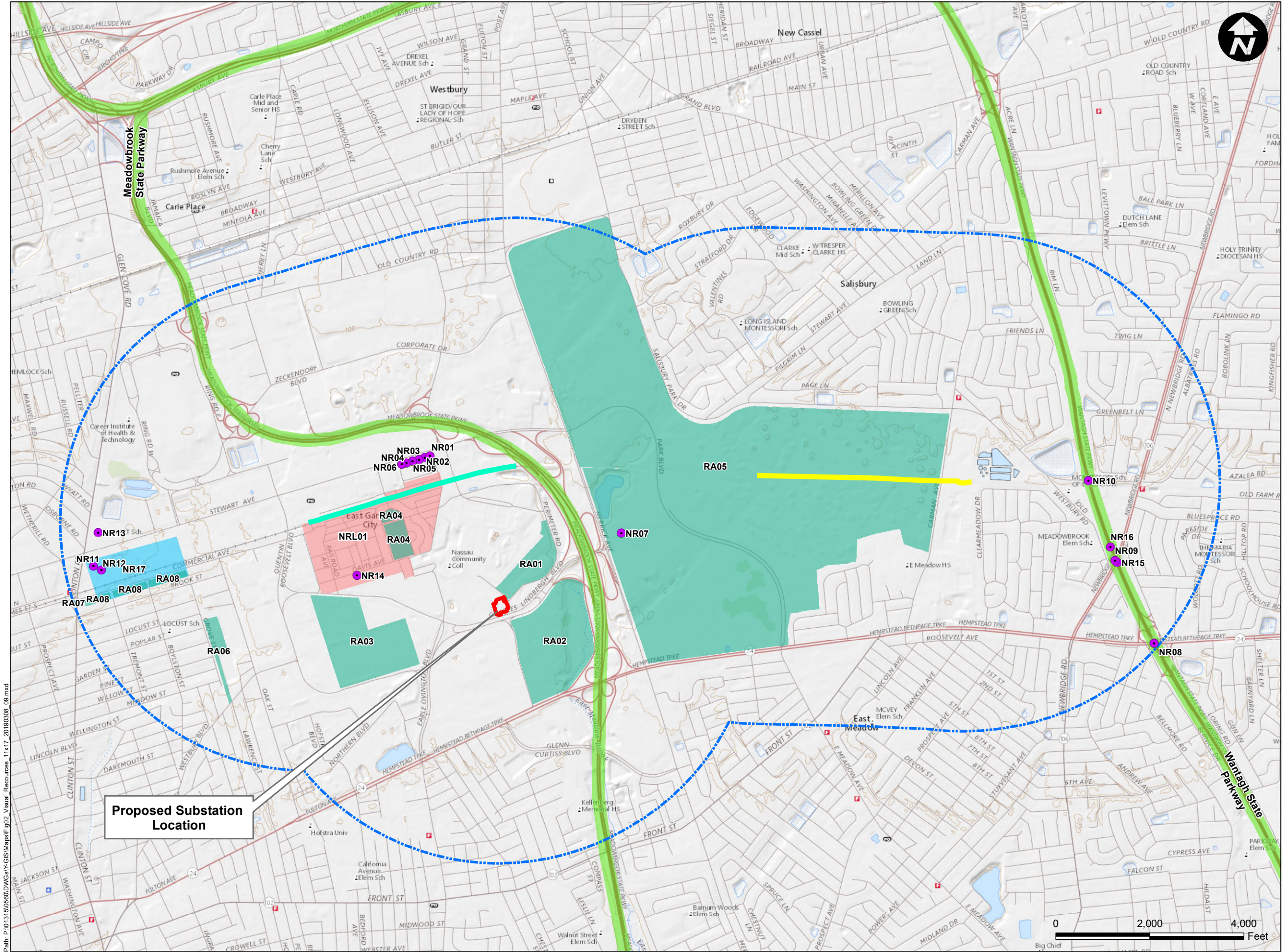
DRN. BY PDT

CHK. BY MH

SCALE 1" = 1,500'

FIGURE NO. C1





- Legend**
- National Register Eligible Structures
  - Section A OH Transmission Line and Structure Modifications
  - Section B OH Transmission Line and Structure Modifications
  - Proposed Substation Location
  - 1-Mile Buffer Zone
  - Recreation Areas
  - National Register Listed District
  - National Register Eligible Area
  - Scenic Byways

Sources:  
Esri, USGS, US Topo, The National Map  
PSEG Long Island Parcel Data Set  
New York State Department of Transportation  
New York State Office of Historic Preservation  
National Reister Liste District, National Register  
Eligible Areas and Natioanl Register Eligible  
Structures taken from New York State Office of Historic  
Preservation Cultural Resource Information System  
(CRIS), February 2019



1983 MARCUS AVENUE  
SUITE C116  
LAKE SUCCESS, NEW YORK 11042  
PHONE: (516) 512-7300  
CERTIFICATE OF AUTHORIZATION NO. 24GA28032700

ALL DIMENSIONS MUST BE VERIFIED BY THE CONTRACTOR. NOTIFY PAULUS, SOKOLOWSKI AND SARTOR, LLC OF ANY CONFLICTS, ERRORS, AMBIGUITIES OR DISCREPANCIES IN THE CONTRACT DRAWINGS OR SPECIFICATIONS BEFORE PROCEEDING WITH CONSTRUCTION. DO NOT SCALE THE DRAWINGS TO DETERMINE DIMENSIONS.

ALL DIMENSIONS SHALL BE AS NOTED IN WORDS OR NUMBERS ON THE CONTRACT DRAWINGS. DO NOT SCALE THE DRAWINGS TO DETERMINE DIMENSIONS.

THESE CONTRACT DRAWINGS CONTAIN DATA INTENDED SPECIFICALLY FOR THE NOTED PROJECT AND CLIENT. THEY ARE NOT INTENDED FOR USE ON EXTENSIONS OF THIS PROJECT OR FOR REUSE ON ANY OTHER PROJECT.

THE COPYING AND/OR MODIFICATION OF THIS DOCUMENT OR ANY PORTION THEREOF WITHOUT THE WRITTEN PERMISSION OF PAULUS, SOKOLOWSKI AND SARTOR, LLC IS PROHIBITED.

UNLESS THESE DRAWINGS ARE SPECIFICALLY DESIGNATED AS "CONSTRUCTION ISSUE", THESE DRAWINGS SHALL NOT BE USED FOR CONSTRUCTION OR IMPROVEMENTS DEPICTED HEREIN. CONTRACTORS SHALL NOTIFY THE DESIGN ENGINEER TO OBTAIN CONSTRUCTION DOCUMENTS.

COPYRIGHT 2019 PAULUS, SOKOLOWSKI, AND SARTOR LLC. - ALL RIGHTS RESERVED.

**PROJECT TITLE**

**Lindbergh Substation and  
Associated Transmission Line  
Replacement and Reconductoring,  
Distribution Feeder Installation, and  
Conversion and Reconductoring Project**  
Town of Hempstead  
Nassau County, New York

**SHEET TITLE**

**VISUAL RESOURCES MAP**

PROJ. NO. **01315.0560**

DATE 3/13/2019

DRN. BY JF/PDT

CHK. BY MH

SCALE 1" = 2,000'

FIGURE NO. 2



**Visual Resources Assessment**  
**Existing Conditions Photographs**



**Lindbergh Substation**  
**Town of Hempstead, Nassau County, New York**

**Structure Height Reference Table:**

(heights are approximate)

1000 Stewart Avenue	35 ft.
Nassau Community College “G” Building	45 ft.
Nassau Energy Corporation smoke-stack	140 ft.
333 Earle Ovington Plaza	145 ft.
Nassau Community College “T” Tower	170 ft.
RXR Plaza	190 ft.
Nassau University Medical Center	300 ft.
Covanta Hempstead smoke stack	375 ft.



Photo 1: View facing northwest from south side of Charles Lindbergh Boulevard towards site of Proposed Substation, immediately west of Francis T. Purcell Preserve (RA02) and south of Hempstead Plains Preserve (RA01) Recreation Areas. Prominent structures in viewshed include the adjacent Nassau Energy Corporation smoke-stack. Photo location is approximately 250 feet from site of Proposed Substation.



**Lindbergh Substation**  
**Town of Hempstead, Nassau County, New York**



Photo 2: View facing west from south side of Charles Lindbergh Boulevard immediately west of Francis T. Purcell Preserve (RA02) and south of Hempstead Plains Preserve (RA01) Recreation Areas. Prominent structures in viewshed include Nassau Coliseum (background, left, 0.25 mile from vantage point) and 333 Earle Ovington Boulevard (background, right, 0.33 mile from vantage point). Photo location is approximately 250 feet from site of Proposed Substation.



**Lindbergh Substation**  
**Town of Hempstead, Nassau County, New York**



Photo 3: View facing south from south side of Charles Lindbergh Boulevard onto Francis T. Purcell Preserve Recreation Area (RA02), south of Hempstead Plains Preserve (RA01) Recreation Area. Prominent structures in viewshed include the two buildings that make up RXX Plaza (0.42 mile from vantage point). Photo location is approximately 250 feet from site of Proposed Substation.



**Lindbergh Substation**  
**Town of Hempstead, Nassau County, New York**



Photo 4: View facing southwest from Nassau Community College Parking Lot, East 5A onto Hempstead Plains Preserve Recreation Area (RA01), towards site of the Proposed Substation (0.12 mile from vantage point). Prominent structures in viewshed include the Nassau Energy Corporation. Photo location is approximately 600 feet from site of Proposed Substation.



**Lindbergh Substation  
Town of Hempstead, Nassau County, New York**



Photo 5: View facing southwest from south side of overpass of Charles Lindbergh Boulevard and the Meadowbrook Parkway Scenic Byway ( towards site of Proposed Substation, immediately north of Francis T. Purcell Preserve (RA02) and immediately south of Hempstead Plains Preserve (RA01) Recreation Areas. Prominent structures in viewshed include (from left): 333 Earle Ovington Boulevard (0.63 mile from vantage point), Nassau Energy Corporation smoke-stack (0.39 mile from vantage point), and the “T” Tower of Nassau Community College (0.52 mile from vantage point). Photo location is 0.31 mile from site of Proposed Substation.



**Lindbergh Substation**  
**Town of Hempstead, Nassau County, New York**



Photo 6: View facing southeast from south side of Davis Avenue towards site of Proposed Substation, south of the Museum Row Recreation Area (RA04) and towards Hempstead Plains Preserve Recreation Area (RA01). Prominent structures in viewshed include 333 Earle Ovington Boulevard (0.26 mile from vantage point). Photo location is 0.43 mile from site of Proposed Substation.



**Lindbergh Substation  
Town of Hempstead, Nassau County, New York**



Photo 7: View facing east from south side of Davis Avenue, proximate to the Museum Row Recreation Area (RA04). Prominent structures in viewshed include Nassau Community College “G” Building (0.07 mile from vantage point) and “T” Tower (0.19 mile from vantage point). These structure are visible in the background- right of the image behind the *No Right Turn* sign. Photo location is 0.42 mile from site of Proposed Substation

**Lindbergh Substation**  
**Town of Hempstead, Nassau County, New York**



Photo 8: View facing east from south side of Charles Lindbergh Boulevard towards site of Proposed Substation, immediately north of the Mitchel Athletic Complex Recreation Area (RA03). Photo location is 0.53 mile from site of Proposed Substation.



**Lindbergh Substation  
Town of Hempstead, Nassau County, New York**



Photo 9: View facing south from west side of on-ramp from Stewart Avenue onto the southbound Meadowbrook Parkway Scenic Byway. Photo location is 0.66 mile from site of Proposed Substation.



Photo 10: View facing west from west side of on-ramp from Stewart Avenue onto the southbound Meadowbrook Parkway Scenic Byway. Prominent structures in viewshed include 1000 Stewart Avenue (0.04 mile from vantage point), which can be seen through the vegetation in the background. Photo location is 0.66 mile from site of Proposed Substation.



**Lindbergh Substation**  
**Town of Hempstead, Nassau County, New York**



Photo 11: View facing north from west side of on-ramp from Stewart Avenue onto the southbound Meadowbrook Parkway Scenic Byway. Prominent structures in viewshed include The Covanta Hempstead Waste Processing Facility (0.1 mile from vantage point). Photo location is 0.66 mile from site of Proposed Substation.



**Lindbergh Substation  
Town of Hempstead, Nassau County, New York**



Photo 12: View facing southeast towards site of Proposed Substation from south side of Ellington Avenue East and north of the Hempstead Plains Preserve Recreation Area, proximate to National Register Eligible Structures: B-303, B-304, B-305 and B-306, 1932 Officers Quarters (NR02, NR03, NR04, NR05). Prominent structures in viewshed include an existing metal transmission pole. Photo location is 0.57 mile from site of Proposed Substation.



**Lindbergh Substation  
Town of Hempstead, Nassau County, New York**



Photo 13: View facing southwest from south side of Ellington Avenue East and north of the Hempstead Plains Preserve Recreation Area, proximate to National Register Eligible Structures: B-303, B-304, B-305 and B-306, 1932 Officers Quarters (NR02, NR03, NR04, NR05). Photo location is 0.57 mile from site of Proposed Substation.



**Lindbergh Substation  
Town of Hempstead, Nassau County, New York**



Photo 14: View facing north onto National Register Eligible Structure; Staller Mansion (NR07), also known as Lannin House, on the grounds of the Eisenhower Park Recreation Area (RA05), immediately west of National Register Eligible Structure; Staller Mansion Cottage (NR08). Photo location is 0.52 mile from site of Proposed Substation

**Lindbergh Substation  
Town of Hempstead, Nassau County, New York**



Photo 15: View facing southwest proximate to Staller Mansion (NR07 towards site of Proposed Substation, the Francis T. Purcell Preserve (RA02) and Hempstead Plains Preserve (RA01) Recreation Areas. Prominent structures in viewshed include the intersection of Charles Lindbergh Boulevard and Merrick Avenue, which is visible in the background. Photo location is 0.52 mile from site of Proposed Substation.



**Lindbergh Substation**  
**Town of Hempstead, Nassau County, New York**



Photo 16: View facing east from east side of Grove Street onto the Grove Park Recreation Area (RA06) towards site of Proposed Substation. Prominent structures in viewshed include existing 45 ft. metal transmission poles. Photo location is 1.14 miles from site of Proposed Substation.



**Lindbergh Substation  
Town of Hempstead, Nassau County, New York**



Photo 17: View facing southeast from south side of Commercial Avenue onto right-of-way at the north end of Grove Street immediately east of the National Register Eligible Area; Curtiss Aircraft Complex - Oxford Pendaflex (NR15). Photo location is 1.25 miles from site of Proposed Substation.



**Lindbergh Substation  
Town of Hempstead, Nassau County, New York**



Photo 18: View facing west from east side of Carman Avenue onto Eisenhower Park Recreation Area (RA05). Prominent structures in viewshed include an existing 45 ft. lattice steel transmission tower. Photo location is 1.82 miles from site of Proposed Substation.



**Lindbergh Substation  
Town of Hempstead, Nassau County, New York**



Photo 19: View facing southwest from the north side of Salisbury Park Road at the Wantagh State Parkway Scenic Byway overpass. The overpass is the National Register Eligible Structure; Single Arch Bridge, 1938 (NR11). Photo location is 2.40 miles from site of Proposed Substation.



**Lindbergh Substation**  
**Town of Hempstead, Nassau County, New York**



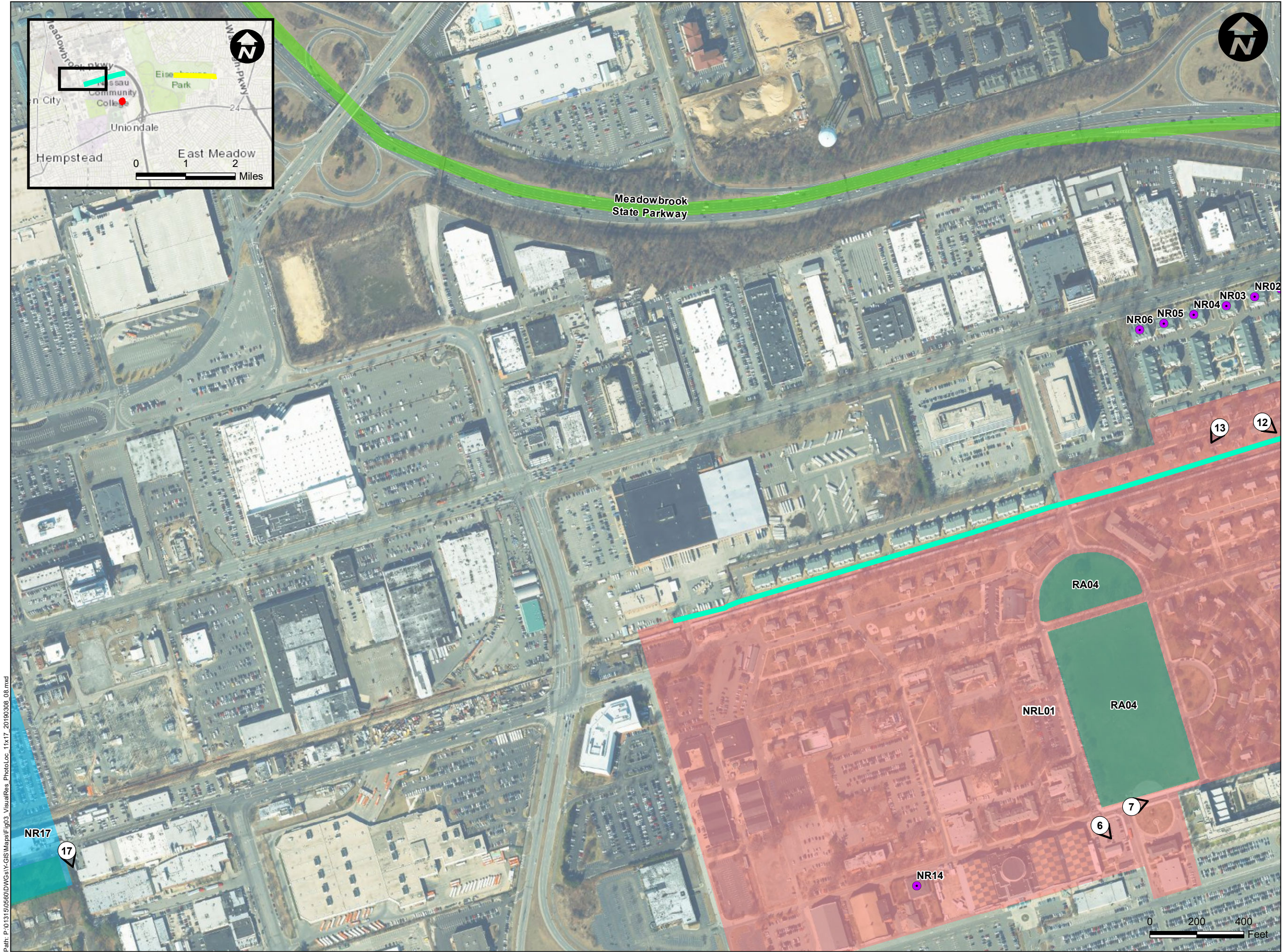
Photo 20: View facing southeast from the north side of Salisbury Park Road at the Wantagh State Parkway scenic byway overpass. The overpass is the National Register Eligible Structure; Single Arch Bridge, 1938 (NR11). Prominent structures in viewshed include an existing lattice steel transmission tower. Photo location is 2.40 miles from site of Proposed Substation.

**Lindbergh Substation  
Town of Hempstead, Nassau County, New York**



Photo 21: View facing west from east side of Newbridge Road overpass of the Wantagh State Parkway scenic byway. The overpass consists of the National Register Eligible Structures; Double Arched Bridge, 1937 (NR06) and Bridge, 1956 (NR10). Prominent structures in viewshed include the Nassau University Medical Center (0.74 mile from vantage point). Photo location is 2.45 miles from site of Proposed Substation.





Legend

Photo Locations

National Register Eligible Structures

Section A OH Transmission Line and Structure Modifications

Recreation Areas

National Register Listed District

National Register Eligible Area

Scenic Byways

Sources:  
PSEG Long Island Parcel Data Set  
New York State Office of Historic Preservation  
New York State Department of Transportation  
National Reister Liste District, National Register  
Eligible Areas and Natioanl Register Eligible  
Structures taken from New York State Office of Historic  
Preservation Cultural Resource Information System  
(CRIS), February 2019  
Nassau County Imagery, NYS ITS GIS Orthos, 2016

1983 MARCUS AVENUE  
SUITE C116  
LAKE SUCCESS, NEW YORK 11042  
PHONE: (516) 512-7300  
CERTIFICATE OF AUTHORIZATION NO. 24GA28032700

ALL DIMENSIONS MUST BE VERIFIED BY THE CONTRACTOR. NOTIFY PAULUS, SOKOLOWSKI AND SARTOR, LLC, OF ANY CONFLICTS, ERRORS, AMBIGUITIES OR DISCREPANCIES IN THE CONTRACT DRAWINGS OR SPECIFICATIONS BEFORE PROCEEDING WITH CONSTRUCTION.

ALL DIMENSIONS SHALL BE AS NOTED IN WORDS OR NUMBERS ON THE CONTRACT DRAWINGS. DO NOT SCALE THE DRAWINGS TO DETERMINE DIMENSIONS.

THESE CONTRACT DRAWINGS CONTAIN DATA INTENDED SPECIFICALLY FOR THE NOTED PROJECT AND CLIENT. THEY ARE NOT INTENDED FOR USE ON EXTENSIONS OF THIS PROJECT OR FOR REUSE ON ANY OTHER PROJECT.

THE COPYING AND/OR MODIFICATION OF THIS DOCUMENT OR ANY PORTION THEREOF WITHOUT THE WRITTEN PERMISSION OF PAULUS, SOKOLOWSKI AND SARTOR, LLC, IS PROHIBITED.

UNLESS THESE DRAWINGS ARE SPECIFICALLY DESIGNATED AS "CONSTRUCTION ISSUE", THESE DRAWINGS SHALL NOT BE USED FOR CONSTRUCTION OR IMPROVEMENTS DEPICTED HEREIN. CONTRACTORS SHALL NOTIFY THE DESIGN ENGINEER TO OBTAIN A CONSTRUCTION DOCUMENTS.

COPYRIGHT 2019 PAULUS, SOKOLOWSKI, AND SARTOR LLC. - ALL RIGHTS RESERVED.

PROJECT TITLE

Lindbergh Substation and  
Associated Transmission Line  
Replacement and Reconductoring,  
Distribution Feeder Installation, and  
Conversion and Reconductoring Project  
Town of Hempstead  
Nassau County, New York

SHEET TITLE

VISUAL RESOURCES  
PHOTO LOCATION MAP

PROJ. NO. 01315.0560

DATE 3/8/2019

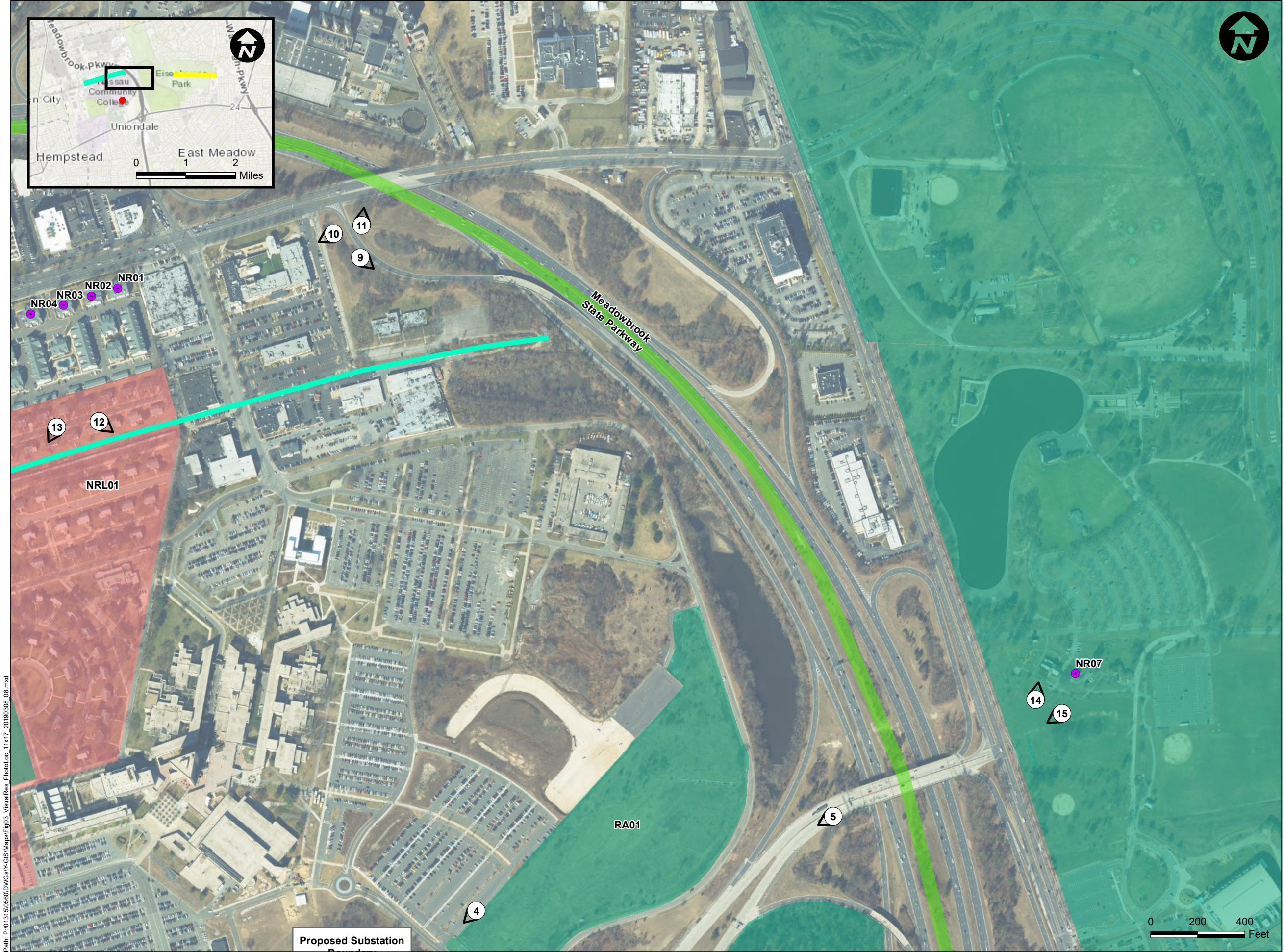
DRN. BY JF/PDT

CHK. BY MH

SCALE 1" = 400'

FIGURE NO. C3 Page 1 of 5





Path: P:\01315150560\DWG\GIS\GIS Maps\Fig03\_VisualRes\_PhotoLoc\_11x17\_20190308\_08.mxd

- Legend
- Photo Locations
- National Register Eligible Structures
- Section A OH Transmission Line and Structure Modifications
- Recreation Areas
- National Register Listed District
- Scenic Byways

Sources:  
PSEG Long Island Parcel Data Set  
New York State Office of Historic Preservation  
New York State Department of Transportation  
National Reister Liste District, National Register Eligible Areas and Natioanl Register Eligible Structures taken from New York State Office of Historic Preservation Cultural Resource Information System (CRIS), February 2019  
Nassau County Imagery, NYS ITS GIS Orthos, 2016

1983 MARCUS AVENUE  
SUITE C116  
LAKE SUCCESS, NEW YORK 11042  
PHONE: (516) 512-7300  
CERTIFICATE OF AUTHORIZATION NO. 24GA28032700

ALL DIMENSIONS MUST BE VERIFIED BY THE CONTRACTOR. NOTIFY PAULUS, SOKOLOWSKI AND SARTOR, LLC OF ANY CONFLICTS, ERRORS, AMBIGUITIES OR DISCREPANCIES IN THE CONTRACT DRAWINGS OR SPECIFICATIONS BEFORE PROCEEDING WITH CONSTRUCTION.  
ALL DIMENSIONS SHALL BE AS NOTED IN WORDS OR NUMBERS ON THE CONTRACT DRAWINGS. DO NOT SCALE THE DRAWINGS TO DETERMINE DIMENSIONS.  
THESE CONTRACT DRAWINGS CONTAIN DATA INTENDED SPECIFICALLY FOR THE NOTED PROJECT AND CLIENT. THEY ARE NOT INTENDED FOR USE ON EXTENSIONS OF THIS PROJECT OR FOR REUSE ON ANY OTHER PROJECT.  
THE COPYING AND/OR MODIFICATION OF THIS DOCUMENT OR ANY PORTION THEREOF WITHOUT THE WRITTEN PERMISSION OF PAULUS, SOKOLOWSKI AND SARTOR, LLC IS PROHIBITED.  
UNLESS THESE DRAWINGS ARE SPECIFICALLY DESIGNATED AS "CONSTRUCTION ISSUE", THESE DRAWINGS SHALL NOT BE USED FOR CONSTRUCTION OR IMPROVEMENTS DEPICTED HEREIN. CONTRACTORS SHALL NOTIFY THE DESIGN ENGINEER TO OBTAIN CONSTRUCTION DOCUMENTS.  
COPYRIGHT 2019 PAULUS, SOKOLOWSKI, AND SARTOR LLC. - ALL RIGHTS RESERVED.

PROJECT TITLE

Lindbergh Substation and  
Associated Transmission Line  
Replacement and Reconductoring,  
Distribution Feeder Installation, and  
Conversion and Reconductoring Project  
Town of Hempstead  
Nassau County, New York

SHEET TITLE

VISUAL RESOURCES  
PHOTO LOCATION MAP

PROJ. NO. 01315.0560

DATE 3/8/2019

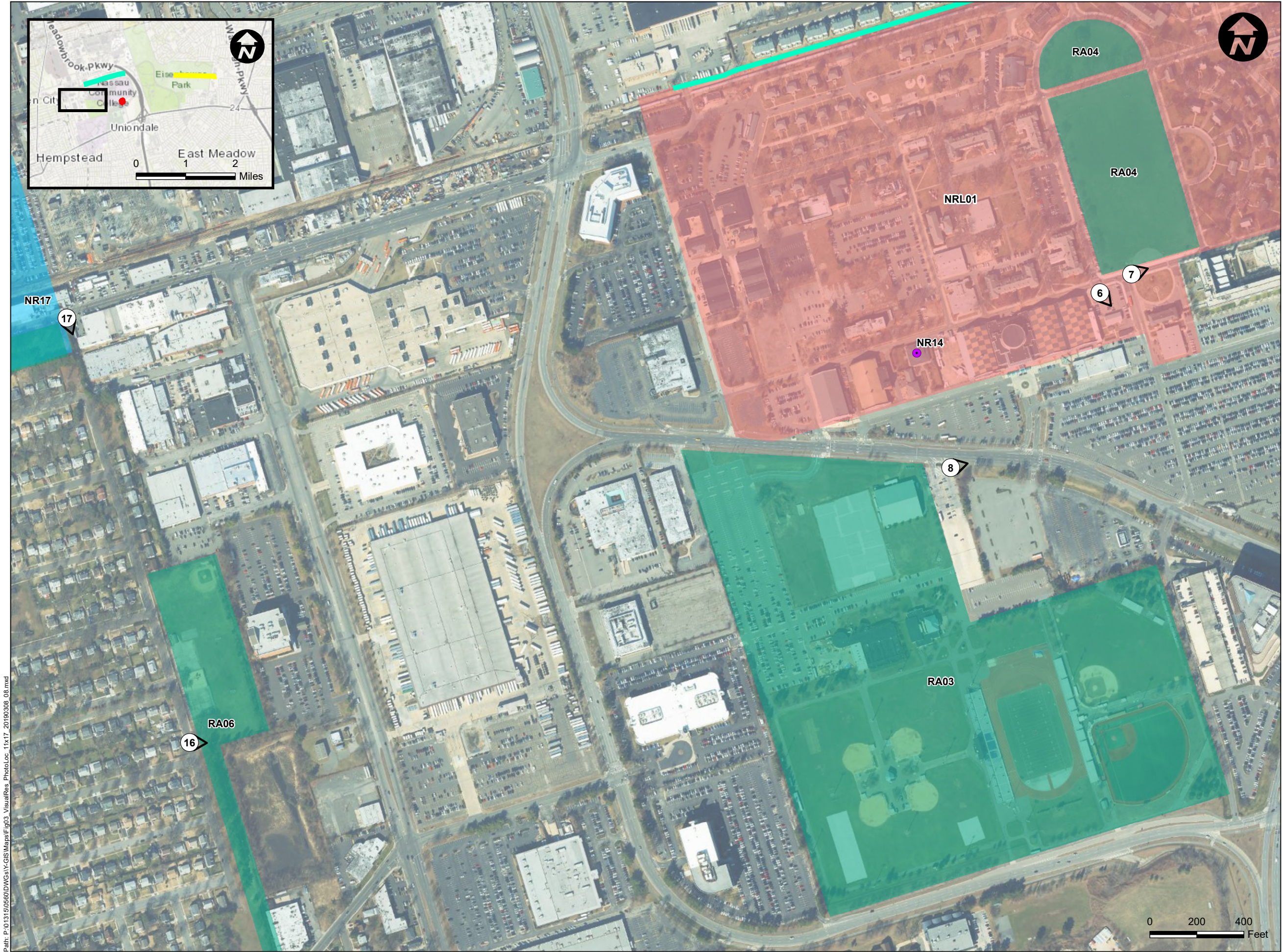
DRN. BY JF/PDT

CHK. BY MH

SCALE 1" = 400'

FIGURE NO. C3 Page 2 of 5





Legend

Photo Locations

National Register Eligible Structures

Section A OH Transmission Line and Structure Modifications

Recreation Areas

National Register Listed District

National Register Eligible Area

Sources:  
PSEG Long Island Parcel Data Set  
New York State Office of Historic Preservation  
New York State Department of Transportation  
National Reister Liste District, National Register  
Eligible Areas and National Register Eligible  
Structures taken from New York State Office of Historic  
Preservation Cultural Resource Information System  
(CRIS), February 2019  
Nassau County Imagery, NYS ITS GIS Orthos, 2016

1983 MARCUS AVENUE  
SUITE C116  
LAKE SUCCESS, NEW YORK 11042  
PHONE: (516) 512-7300  
CERTIFICATE OF AUTHORIZATION NO. 24GA28032700

ALL DIMENSIONS MUST BE VERIFIED BY THE CONTRACTOR. NOTIFY PAULUS, SOKOLOWSKI AND SARTOR, LLC OF ANY CONFLICTS, ERRORS, AMBIGUITIES OR DISCREPANCIES IN THE CONTRACT DRAWINGS OR SPECIFICATIONS BEFORE PROCEEDING WITH CONSTRUCTION.  
ALL DIMENSIONS SHALL BE AS NOTED IN WORDS OR NUMBERS ON THE CONTRACT DRAWINGS. DO NOT SCALE THE DRAWINGS TO DETERMINE DIMENSIONS.  
THESE CONTRACT DRAWINGS CONTAIN DATA INTENDED SPECIFICALLY FOR THE NOTED PROJECT AND CLIENT. THEY ARE NOT INTENDED FOR USE ON EXTENSIONS OF THIS PROJECT OR FOR REUSE ON ANY OTHER PROJECT.  
THE COPYING AND/OR MODIFICATION OF THIS DOCUMENT OR ANY PORTION THEREOF WITHOUT THE WRITTEN PERMISSION OF PAULUS, SOKOLOWSKI AND SARTOR, LLC IS PROHIBITED.  
UNLESS THESE DRAWINGS ARE SPECIFICALLY DESIGNATED AS "CONSTRUCTION ISSUE", THESE DRAWINGS SHALL NOT BE USED FOR CONSTRUCTION OR IMPROVEMENTS DEPICTED HEREIN. CONTRACTORS SHALL NOTIFY THE DESIGN ENGINEER TO OBTAIN A CONSTRUCTION DOCUMENTS.  
COPYRIGHT 2019 PAULUS, SOKOLOWSKI AND SARTOR LLC. - ALL RIGHTS RESERVED.

PROJECT TITLE

Lindbergh Substation and  
Associated Transmission Line  
Replacement and Reconductoring,  
Distribution Feeder Installation, and  
Conversion and Reconductoring Project  
Town of Hempstead  
Nassau County, New York

SHEET TITLE

VISUAL RESOURCES  
PHOTO LOCATION MAP

PROJ. NO. 01315.0560

DATE 3/8/2019

DRN. BY JF/PDT

CHK. BY MH

SCALE 1" = 400'

FIGURE NO. C3 Page 3 of 5





Legend

- Photo Locations
- National Register Eligible Structures
- Proposed Substation Location
- Recreation Areas
- National Register Listed District
- Scenic Byways

Sources:  
PSEG Long Island Parcel Data Set  
New York State Office of Historic Preservation  
New York State Department of Transportation  
National Reister Liste District, National Register  
Eligible Areas and Natioanl Register Eligible  
Structures taken from New York State Office of Historic  
Preservation Cultural Resource Information System  
(CRIS), February 2019  
Nassau County Imagery, NYS ITS GIS Orthos, 2016



1983 MARCUS AVENUE  
SUITE C116  
LAKE SUCCESS, NEW YORK 11042  
PHONE: (516) 512-7300  
CERTIFICATE OF AUTHORIZATION NO. 24GA28032700

ALL DIMENSIONS MUST BE VERIFIED BY THE CONTRACTOR. NOTIFY PAULUS, SOKOLOWSKI AND SARTOR, LLC OF ANY CONFLICTS, ERRORS, AMBIGUITIES OR DISCREPANCIES IN THE CONTRACT DRAWINGS OR SPECIFICATIONS BEFORE PROCEEDING WITH CONSTRUCTION.  
ALL DIMENSIONS SHALL BE AS NOTED IN WORDS OR NUMBERS ON THE CONTRACT DRAWINGS. DO NOT SCALE THE DRAWINGS TO DETERMINE DIMENSIONS.  
THESE CONTRACT DRAWINGS CONTAIN DATA INTENDED SPECIFICALLY FOR THE NOTED PROJECT AND CLIENT. THEY ARE NOT INTENDED FOR USE ON EXTENSIONS OF THIS PROJECT OR FOR REUSE ON ANY OTHER PROJECT.  
THE COPYING AND/OR MODIFICATION OF THIS DOCUMENT OR ANY PORTION THEREOF WITHOUT THE WRITTEN PERMISSION OF PAULUS, SOKOLOWSKI AND SARTOR, LLC IS PROHIBITED.  
UNLESS THESE DRAWINGS ARE SPECIFICALLY DESIGNATED AS "CONSTRUCTION ISSUE", THESE DRAWINGS SHALL NOT BE USED FOR CONSTRUCTION OR IMPROVEMENTS DEPICTED HEREIN. CONTRACTORS SHALL NOTIFY THE DESIGN ENGINEER TO OBTAIN A CONSTRUCTION DOCUMENTS.  
COPYRIGHT 2019 PAULUS, SOKOLOWSKI, AND SARTOR LLC. - ALL RIGHTS RESERVED.

PROJECT TITLE

**Lindbergh Substation and  
Associated Transmission Line  
Replacement and Reconductoring,  
Distribution Feeder Installation, and  
Conversion and Reconductoring Project**  
Town of Hempstead  
Nassau County, New York

SHEET TITLE

**VISUAL RESOURCES  
PHOTO LOCATION MAP**

PROJ. NO. **01315.0560**

DATE 3/8/2019

DRN. BY JF/PDT

CHK. BY MH

SCALE 1" = 400'

FIGURE NO. C3 Page 4 of 5





Legend

- Photo Locations
- National Register Eligible Structures
- Section B OH Transmission Line and Structure Modifications
- Recreation Areas
- Scenic Byways

Sources:  
PSEG Long Island Parcel Data Set  
New York State Office of Historic Preservation  
New York State Department of Transportation  
National Reister Liste District, National Register  
Eligible Areas and National Register Eligible  
Structures taken from New York State Office of Historic  
Preservation Cultural Resource Information System  
(CRIS), February 2019  
Nassau County Imagery, NYS ITS GIS Orthos, 2016



1983 MARCUS AVENUE  
SUITE C116  
LAKE SUCCESS, NEW YORK 11042  
PHONE: (516) 512-7300  
CERTIFICATE OF AUTHORIZATION NO. 24GA28032700

ALL DIMENSIONS MUST BE VERIFIED BY THE CONTRACTOR. NOTIFY PAULUS, SOKOLOWSKI AND SARTOR, LLC OF ANY CONFLICTS, ERRORS, AMBIGUITIES OR DISCREPANCIES IN THE CONTRACT DRAWINGS OR SPECIFICATIONS BEFORE PROCEEDING WITH CONSTRUCTION.  
ALL DIMENSIONS SHALL BE AS NOTED IN WORDS OR NUMBERS ON THE CONTRACT DRAWINGS. DO NOT SCALE THE DRAWINGS TO DETERMINE DIMENSIONS.  
THESE CONTRACT DRAWINGS CONTAIN DATA INTENDED SPECIFICALLY FOR THE NOTED PROJECT AND CLIENT. THEY ARE NOT INTENDED FOR USE ON EXTENSIONS OF THIS PROJECT OR FOR REUSE ON ANY OTHER PROJECT.  
THE COPYING AND/OR MODIFICATION OF THIS DOCUMENT OR ANY PORTION THEREOF WITHOUT THE WRITTEN PERMISSION OF PAULUS, SOKOLOWSKI AND SARTOR, LLC IS PROHIBITED.  
UNLESS THESE DRAWINGS ARE SPECIFICALLY DESIGNATED AS "CONSTRUCTION ISSUE", THESE DRAWINGS SHALL NOT BE USED FOR CONSTRUCTION OR IMPROVEMENTS DEPICTED HEREIN. CONTRACTORS SHALL NOTIFY THE DESIGN ENGINEER TO OBTAIN CONSTRUCTION DOCUMENTS.  
COPYRIGHT 2019 PAULUS, SOKOLOWSKI, AND SARTOR LLC. - ALL RIGHTS RESERVED.

PROJECT TITLE

**Lindbergh Substation and  
Associated Transmission Line  
Replacement and Reconductoring,  
Distribution Feeder Installation, and  
Conversion and Reconductoring Project**  
Town of Hempstead  
Nassau County, New York

SHEET TITLE

**VISUAL RESOURCES  
PHOTO LOCATION MAP**

PROJ. NO. **01315.0560**

DATE 3/8/2019

DRN. BY JF/PDT

CHK. BY MH

SCALE 1" = 400'

FIGURE NO. C3 Page 5 of 5



**New York State Office of Parks, Recreation and Historic Preservation**  
**Letters of No Impact**





## Parks, Recreation, and Historic Preservation

ANDREW M. CUOMO  
Governor

ERIK KULLESEID  
Commissioner

February 20, 2019

Ms. Lindsay Peppe  
Permitting Specialist Supervisor  
PSEG Long Island  
999 Stewart Avenue  
Bethpage, NY 11714

Re: LIPA  
Lindbergh Substation - Transmission Line Replacement and Reconductoring  
19PR00857

Dear Ms. Peppe:

Thank you for requesting the comments of the Office of Parks, Recreation and Historic Preservation (OPRHP). We have reviewed the project in accordance with the New York State Historic Preservation Act of 1980 (Section 14.09 of the New York Parks, Recreation and Historic Preservation Law). These comments are those of the OPRHP and relate only to Historic/Cultural resources. They do not include potential environmental impacts to New York State Parkland that may be involved in or near your project. Such impacts must be considered as part of the environmental review of the project pursuant to the State Environmental Quality Review Act (New York Environmental Conservation Law Article 8) and its implementing regulations (6 NYCRR Part 617).

Based upon this review, it is the New York State Office of Parks, Recreation and Historic Preservation's opinion that your project will have no impact on archaeological and/or historic resources listed in or eligible for the New York State and National Registers of Historic Places.

If further correspondence is required regarding this project, please be sure to refer to the OPRHP Project Review (PR) number noted above.

Sincerely,

Michael F. Lynch, P.E., AIA  
Director, Division for Historic Preservation





## Parks, Recreation, and Historic Preservation

ANDREW M. CUOMO  
Governor

ERIK KULLESEID  
Commissioner

February 20, 2019

Ms. Lindsay Peppe  
Permitting Specialist Supervisor  
PSEG Long Island  
999 Stewart Avenue  
Bethpage, NY 11714

Re: LIPA  
Linbergh Substation - Underground Distribution Exit Feeders  
19PR00858

Dear Ms. Peppe:

Thank you for requesting the comments of the Office of Parks, Recreation and Historic Preservation (OPRHP). We have reviewed the project in accordance with the New York State Historic Preservation Act of 1980 (Section 14.09 of the New York Parks, Recreation and Historic Preservation Law). These comments are those of the OPRHP and relate only to Historic/Cultural resources. They do not include potential environmental impacts to New York State Parkland that may be involved in or near your project. Such impacts must be considered as part of the environmental review of the project pursuant to the State Environmental Quality Review Act (New York Environmental Conservation Law Article 8) and its implementing regulations (6 NYCRR Part 617).

Based upon this review, it is the New York State Office of Parks, Recreation and Historic Preservation's opinion that your project will have no impact on archaeological and/or historic resources listed in or eligible for the New York State and National Registers of Historic Places.

If further correspondence is required regarding this project, please be sure to refer to the OPRHP Project Review (PR) number noted above.

Sincerely,

Michael F. Lynch, P.E., AIA  
Director, Division for Historic Preservation





## Parks, Recreation, and Historic Preservation

ANDREW M. CUOMO  
Governor

ERIK KULLESEID  
Commissioner

March 14, 2019

Ms. Lindsay Peppe  
Permitting Specialist Supervisor  
PSEG Long Island  
999 Stewart Avenue  
Bethpage, NY 11714

Re: LIPA  
Lindbergh Substation and Associated Transmission Line Replacement and  
Reconductoring, Distribution Feeder Installation, and Conversion and Reconductoring  
Project  
19PR00924

Dear Ms. Peppe:

Thank you for continuing to consult with the Division for Historic Preservation of the Office of Parks, Recreation and Historic Preservation (OPRHP). We have reviewed the submitted materials in accordance with the New York State Historic Preservation Act of 1980 (section 14.09 of the New York Parks, Recreation and Historic Preservation Law). These comments are those of the Division for Historic Preservation and relate only to Historic/Cultural resources.

We have reviewed the additional materials that were provided to our office on March 12<sup>th</sup>, 2019. Based upon our review, it is OPRHP's opinion that the proposed work will have No Adverse Impact on historic resources.

If additional information or correspondence is required regarding this project it should be provided via our Cultural Resource Information System (CRIS) at [www.nysparks.com/shpo/online-tools/](http://www.nysparks.com/shpo/online-tools/). Once on the CRIS site, you can log in as a guest and choose "submit" at the very top menu. Next choose "submit new information for an existing project". You will need this project number and your e-mail address. If you have any questions, I can be reached at (518) 268-2182.

Sincerely,

Olivia Brazee  
Historic Site Restoration Coordinator  
olivia.brazee@parks.ny.gov

via e-mail only

---

### Division for Historic Preservation

P.O. Box 189, Waterford, New York 12188-0189 • (518) 237-8643 • [www.nysparks.com](http://www.nysparks.com)