



United States Department of the Interior



FISH AND WILDLIFE SERVICE
Long Island Ecological Services Field Office
340 SMITH ROAD
SHIRLEY, NY 11967
PHONE: (631)286-0485 FAX: (631)286-4003

Consultation Code: 05E1LI00-2017-SLI-0226

February 03, 2017

Event Code: 05E1LI00-2017-E-00402

Project Name: Long Island Power Authority - Baldwin Substation

Subject: List of threatened and endangered species that may occur in your proposed project location, and/or may be affected by your proposed project

To Whom It May Concern:

The enclosed species list identifies threatened, endangered, proposed and candidate species, as well as proposed and final designated critical habitat, that may occur within the boundary of your proposed project and/or may be affected by your proposed project. The species list fulfills the requirements of the U.S. Fish and Wildlife Service (Service) under section 7(c) of the Endangered Species Act (Act) of 1973, as amended (16 U.S.C. 1531 *et seq.*).

New information based on updated surveys, changes in the abundance and distribution of species, changed habitat conditions, or other factors could change this list. Please feel free to contact us if you need more current information or assistance regarding the potential impacts to federally proposed, listed, and candidate species and federally designated and proposed critical habitat. Please note that under 50 CFR 402.12(e) of the regulations implementing section 7 of the Act, the accuracy of this species list should be verified after 90 days. This verification can be completed formally or informally as desired. The Service recommends that verification be completed by visiting the ECOS-IPaC website at regular intervals during project planning and implementation for updates to species lists and information. An updated list may be requested through the ECOS-IPaC system by completing the same process used to receive the enclosed list.

The purpose of the Act is to provide a means whereby threatened and endangered species and the ecosystems upon which they depend may be conserved. Under sections 7(a)(1) and 7(a)(2) of the Act and its implementing regulations (50 CFR 402 *et seq.*), Federal agencies are required to utilize their authorities to carry out programs for the conservation of threatened and endangered species and to determine whether projects may affect threatened and endangered species and/or designated critical habitat.

A Biological Assessment is required for construction projects (or other undertakings having

similar physical impacts) that are major Federal actions significantly affecting the quality of the human environment as defined in the National Environmental Policy Act (42 U.S.C. 4332(2)(c)). For projects other than major construction activities, the Service suggests that a biological evaluation similar to a Biological Assessment be prepared to determine whether the project may affect listed or proposed species and/or designated or proposed critical habitat. Recommended contents of a Biological Assessment are described at 50 CFR 402.12.

If a Federal agency determines, based on the Biological Assessment or biological evaluation, that listed species and/or designated critical habitat may be affected by the proposed project, the agency is required to consult with the Service pursuant to 50 CFR 402. In addition, the Service recommends that candidate species, proposed species and proposed critical habitat be addressed within the consultation. More information on the regulations and procedures for section 7 consultation, including the role of permit or license applicants, can be found in the "Endangered Species Consultation Handbook" at:

<http://www.fws.gov/endangered/esa-library/pdf/TOC-GLOS.PDF>

Please be aware that bald and golden eagles are protected under the Bald and Golden Eagle Protection Act (16 U.S.C. 668 *et seq.*), and projects affecting these species may require development of an eagle conservation plan (http://www.fws.gov/windenergy/eagle_guidance.html). Additionally, wind energy projects should follow the wind energy guidelines (<http://www.fws.gov/windenergy/>) for minimizing impacts to migratory birds and bats.

Guidance for minimizing impacts to migratory birds for projects including communications towers (e.g., cellular, digital television, radio, and emergency broadcast) can be found at: <http://www.fws.gov/migratorybirds/CurrentBirdIssues/Hazards/towers/towers.htm>; <http://www.towerkill.com>; and <http://www.fws.gov/migratorybirds/CurrentBirdIssues/Hazards/towers/comtow.html>.

We appreciate your concern for threatened and endangered species. The Service encourages Federal agencies to include conservation of threatened and endangered species into their project planning to further the purposes of the Act. Please include the Consultation Tracking Number in the header of this letter with any request for consultation or correspondence about your project that you submit to our office.

Attachment



United States Department of Interior
Fish and Wildlife Service

Project name: Long Island Power Authority - Baldwin Substation

Official Species List

Provided by:

Long Island Ecological Services Field Office
340 SMITH ROAD
SHIRLEY, NY 11967
(631) 286-0485

Consultation Code: 05E1LI00-2017-SLI-0226

Event Code: 05E1LI00-2017-E-00402

Project Type: ** OTHER **

Project Name: Long Island Power Authority - Baldwin Substation

Project Description: Public Service Enterprise Group Long Island LLC (PSEG LI), through its wholly-owned subsidiary, Long Island Electric Utility Servco LLC, acting as agent of and on behalf of Long Island Lighting Company (LIPA), proposes improvements to 20 existing repeater/hub sites across Nassau and Suffolk Counties, Long Island, New York. The purpose of this work is to re-balance its Distribution Automation (DA) Radio System with technology upgrades and the addition of new frequencies and radios. The overall effort is part of PSEG LI's Federal Emergency Management Agency (FEMA) Hazard Mitigation Program to improve reliability and harden electric infrastructure against possible future storm damage. The work is subject to Federal Communications Commission (FCC) licensing requirements under Section 106 of the National Historic Preservation Act (NHPA), as amended, and Part 617 of the New York State Environmental Quality Review Act (SEQRA).

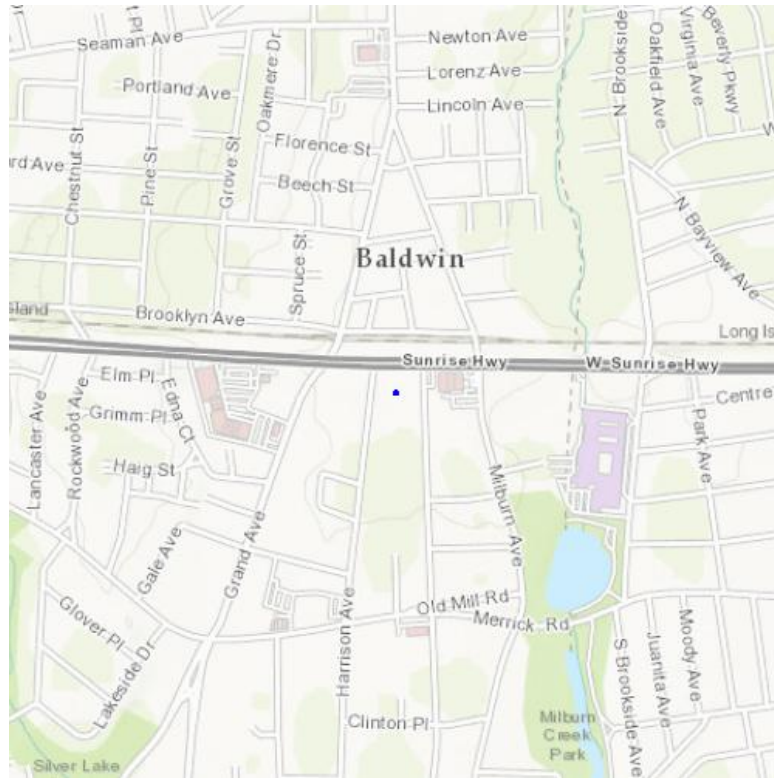
Please Note: The FWS office may have modified the Project Name and/or Project Description, so it may be different from what was submitted in your previous request. If the Consultation Code matches, the FWS considers this to be the same project. Contact the office in the 'Provided by' section of your previous Official Species list if you have any questions or concerns.



United States Department of Interior
Fish and Wildlife Service

Project name: Long Island Power Authority - Baldwin Substation

Project Location Map:



Project Coordinates: MULTIPOLYGON (((-73.60756427049638 40.65571199384171, -73.60756963491441 40.65565094903018, -73.60748380422594 40.65564687937411, -73.6074784398079 40.65572420279731, -73.60756427049638 40.65571199384171)))

Project Counties: Nassau, NY



United States Department of Interior
Fish and Wildlife Service

Project name: Long Island Power Authority - Baldwin Substation

Endangered Species Act Species List

There are a total of 6 threatened or endangered species on your species list. Species on this list should be considered in an effects analysis for your project and could include species that exist in another geographic area. For example, certain fish may appear on the species list because a project could affect downstream species. Critical habitats listed under the **Has Critical Habitat** column may or may not lie within your project area. See the **Critical habitats within your project area** section further below for critical habitat that lies within your project. Please contact the designated FWS office if you have questions.

Birds	Status	Has Critical Habitat	Condition(s)
Piping Plover (<i>Charadrius melodus</i>) Population: except Great Lakes watershed	Threatened	Final designated	
Red Knot (<i>Calidris canutus rufa</i>) Population: Wherever found	Threatened		
Roseate tern (<i>Sterna dougallii</i> <i>dougallii</i>) Population: northeast U.S. nesting pop.	Endangered		
Flowering Plants			
Sandplain gerardia (<i>Agalinis acuta</i>) Population: Wherever found	Endangered		
Seabeach amaranth (<i>Amaranthus</i> <i>pumilus</i>) Population: Wherever found	Threatened		
Mammals			
Northern long-eared Bat (<i>Myotis</i> <i>septentrionalis</i>) Population: Wherever found	Threatened		



United States Department of Interior
Fish and Wildlife Service

Project name: Long Island Power Authority - Baldwin Substation

Critical habitats that lie within your project area

There are no critical habitats within your project area.

IPaC resource list

Project information

NAME

Long Island Power Authority - Baldwin Substation

LOCATION

Nassau County, New York



DESCRIPTION

Public Service Enterprise Group Long Island LLC (PSEG LI), through its wholly-owned subsidiary, Long Island Electric Utility Servco LLC, acting as agent of and on behalf of Long Island Lighting Company (LIPA), proposes improvements to 20 existing repeater/hub sites across Nassau and Suffolk Counties, Long Island, New York. The purpose of this work is to re-balance its Distribution Automation (DA) Radio System with technology upgrades and the addition of new frequencies and radios. The overall effort is part of PSEG LI's Federal Emergency Management Agency (FEMA) Hazard Mitigation Program to improve reliability and harden electric infrastructure against possible future storm damage. The work is subject to Federal Communications Commission (FCC) licensing requirements under Section 106 of the National Historic Preservation Act (NHPA), as amended, and Part 617 of the New York State Environmental Quality Review Act (SEQRA).

Local office

Long Island Ecological Services Field Office

☎ (631) 286-0485

📅 (631) 286-4003

340 Smith Road
Shirley, NY 11967

Endangered species

This resource list is for informational purposes only and should not be used for planning or analyzing project level impacts.

[Section 7](#) of the Endangered Species Act **requires** Federal agencies to “request of the Secretary information whether any species which is listed or proposed to be listed may be present in the area of such proposed action” for any project that is conducted, permitted, funded, or licensed by any Federal agency.

A letter from the local office and a species list which fulfills this requirement can only be obtained by requesting an official species list either from the Regulatory Review section in IPaC or from the local field office directly.

For project evaluations that require USFWS concurrence/review, please return to the IPaC website and request an official species list by creating a project and making a request from the Regulatory Review section.

Listed species¹ are managed by the [Endangered Species Program](#) of the U.S. Fish and Wildlife Service.

1. Species listed under the [Endangered Species Act](#) are threatened or endangered; IPaC also shows species that are candidates, or proposed, for listing. See the [listing status page](#) for more information.

The following species are potentially affected by activities in this location:

Birds

NAME	STATUS
Piping Plover <i>Charadrius melodus</i> There is a final critical habitat designated for this species. Your location is outside the designated critical habitat. http://ecos.fws.gov/ecp/species/6039	Threatened
Red Knot <i>Calidris canutus rufa</i> No critical habitat has been designated for this species. http://ecos.fws.gov/ecp/species/1864	Threatened
Roseate Tern <i>Sterna dougallii dougallii</i> No critical habitat has been designated for this species. http://ecos.fws.gov/ecp/species/2083	Endangered

Flowering Plants

NAME	STATUS
Sandplain Gerardia <i>Agalinis acuta</i> No critical habitat has been designated for this species. http://ecos.fws.gov/ecp/species/8128	Endangered
Seabeach Amaranth <i>Amaranthus pumilus</i> No critical habitat has been designated for this species. http://ecos.fws.gov/ecp/species/8549	Threatened

Mammals

NAME	STATUS
Northern Long-eared Bat <i>Myotis septentrionalis</i> No critical habitat has been designated for this species. http://ecos.fws.gov/ecp/species/9045	Threatened

Critical habitats

Potential effects to critical habitat(s) in this location must be analyzed along with the endangered species themselves.

THERE ARE NO CRITICAL HABITATS AT THIS LOCATION.

Migratory birds

Birds are protected under the Migratory Bird Treaty Act¹ and the Bald and Golden Eagle Protection Act².

Any activity that results in the take (to harass, harm, pursue, hunt, shoot, wound, kill, trap, capture, or collect, or to attempt to engage in any such conduct) of migratory birds or eagles is prohibited unless authorized by the U.S. Fish and Wildlife Service³. There are no provisions for allowing the take of migratory birds that are unintentionally killed or injured.

Any person or organization who plans or conducts activities that may result in the take of migratory birds is responsible for complying with the appropriate regulations and implementing appropriate conservation measures.

1. The [Migratory Birds Treaty Act](#) of 1918.
2. The [Bald and Golden Eagle Protection Act](#) of 1940.
3. 50 C.F.R. Sec. 10.12 and 16 U.S.C. Sec. 668(a)

Additional information can be found using the following links:

- Birds of Conservation Concern <http://www.fws.gov/birds/management/managed-species/birds-of-conservation-concern.php>

- Conservation measures for birds <http://www.fws.gov/birds/management/project-assessment-tools-and-guidance/conservation-measures.php>
- Year-round bird occurrence data <http://www.birdscanada.org/birdmon/default/datasummaries.jsp>

The migratory birds species listed below are species of particular conservation concern (e.g. [Birds of Conservation Concern](#)) that may be potentially affected by activities in this location, not a list of every bird species you may find in this location. Although it is important to try to avoid and minimize impacts to all birds, special attention should be made to avoid and minimize impacts to birds of priority concern. To view available data on other bird species that may occur in your project area, please visit the [AKN Histogram Tools](#) and [Other Bird Data Resources](#).

NAME	SEASON(S)
American Bittern <i>Botaurus lentiginosus</i> http://ecos.fws.gov/ecp/species/6582	On Land: Breeding
American Oystercatcher <i>Haematopus palliatus</i> http://ecos.fws.gov/ecp/species/8935	On Land: Year-round
Bald Eagle <i>Haliaeetus leucocephalus</i> http://ecos.fws.gov/ecp/species/1626	On Land: Year-round
Black Skimmer <i>Rynchops niger</i> http://ecos.fws.gov/ecp/species/5234	On Land: Breeding
Black-billed Cuckoo <i>Coccyzus erythrophthalmus</i> http://ecos.fws.gov/ecp/species/9399	On Land: Breeding
Blue-winged Warbler <i>Vermivora pinus</i>	On Land: Breeding
Canada Warbler <i>Wilsonia canadensis</i>	On Land: Breeding
Fox Sparrow <i>Passerella iliaca</i>	On Land: Wintering
Gull-billed Tern <i>Gelochelidon nilotica</i> http://ecos.fws.gov/ecp/species/9501	On Land: Breeding
Hudsonian Godwit <i>Limosa haemastica</i>	At Sea: Migrating
Least Bittern <i>Ixobrychus exilis</i> http://ecos.fws.gov/ecp/species/6175	On Land: Breeding
Least Tern <i>Sterna antillarum</i>	On Land: Breeding
Marbled Godwit <i>Limosa fedoa</i> http://ecos.fws.gov/ecp/species/9481	On Land: Wintering
Peregrine Falcon <i>Falco peregrinus</i> http://ecos.fws.gov/ecp/species/8831	On Land: Wintering
Pied-billed Grebe <i>Podilymbus podiceps</i>	On Land: Year-round
Prairie Warbler <i>Dendroica discolor</i>	On Land: Breeding
Purple Sandpiper <i>Calidris maritima</i>	On Land: Wintering
Red Knot <i>Calidris canutus rufa</i> http://ecos.fws.gov/ecp/species/1864	On Land: Wintering
Rusty Blackbird <i>Euphagus carolinus</i>	On Land: Wintering
Saltmarsh Sparrow <i>Ammodramus caudacutus</i>	On Land: Breeding

Seaside Sparrow <i>Ammodramus maritimus</i>	On Land: Year-round
Short-eared Owl <i>Asio flammeus</i> http://ecos.fws.gov/ecp/species/9295	On Land: Wintering
Snowy Egret <i>Egretta thula</i>	On Land: Breeding
Upland Sandpiper <i>Bartramia longicauda</i> http://ecos.fws.gov/ecp/species/9294	On Land: Breeding
Willow Flycatcher <i>Empidonax traillii</i> http://ecos.fws.gov/ecp/species/3482	On Land: Breeding
Wood Thrush <i>Hylocichla mustelina</i>	On Land: Breeding
Worm Eating Warbler <i>Helmitheros vermivorum</i>	On Land: Breeding

What does IPaC use to generate the list of migratory bird species potentially occurring in my specified location?

Landbirds:

Migratory birds that are displayed on the IPaC species list are based on ranges in the latest edition of the National Geographic Guide, Birds of North America (6th Edition, 2011 by Jon L. Dunn, and Jonathan Alderfer). Although these ranges are coarse in nature, a number of U.S. Fish and Wildlife Service migratory bird biologists agree that these maps are some of the best range maps to date. These ranges were clipped to a specific Bird Conservation Region (BCR) or USFWS Region/Regions, if it was indicated in the 2008 list of Birds of Conservation Concern (BCC) that a species was a BCC species only in a particular Region/Regions. Additional modifications have been made to some ranges based on more local or refined range information and/or information provided by U.S. Fish and Wildlife Service biologists with species expertise. All migratory birds that show in areas on land in IPaC are those that appear in the 2008 Birds of Conservation Concern report.

Atlantic Seabirds:

Ranges in IPaC for birds off the Atlantic coast are derived from species distribution models developed by the National Oceanic and Atmospheric Association (NOAA) National Centers for Coastal Ocean Science (NCCOS) using the best available seabird survey data for the offshore Atlantic Coastal region to date. NOAA/NCCOS assisted USFWS in developing seasonal species ranges from their models for specific use in IPaC. Some of these birds are not BCC species but were of interest for inclusion because they may occur in high abundance off the coast at different times throughout the year, which potentially makes them more susceptible to certain types of development and activities taking place in that area. For more refined details about the abundance and richness of bird species within your project area off the Atlantic Coast, see the [Northeast Ocean Data Portal](#). The Portal also offers data and information about other types of taxa that may be helpful in your project review.

About the NOAA/NCCOS models: the models were developed as part of the NOAA/NCCOS project: [Integrative Statistical Modeling and Predictive Mapping of Marine Bird Distributions and Abundance on the Atlantic Outer Continental Shelf](#). The models resulting from this project are being used in a number of decision-support/mapping products in order to help guide decision-making on activities off the Atlantic Coast with the goal of reducing impacts to migratory birds. One such product is the [Northeast Ocean Data Portal](#), which can be used to explore details about the relative occurrence and abundance of bird species in a particular area off the Atlantic Coast.

All migratory bird range maps within IPaC are continuously being updated as new and better information becomes available.

Can I get additional information about the levels of occurrence in my project area of specific birds or groups of birds listed in IPaC?

Landbirds:

The [Avian Knowledge Network \(AKN\)](#) provides a tool currently called the "Histogram Tool", which draws from the data within the AKN (latest, survey, point count, citizen science datasets) to create a view of relative abundance of species within a particular location over the course of the year. The results of the tool depict the frequency of detection of a species in survey events, averaged between multiple datasets within AKN in a particular week of the year. You may access the histogram tools through the [Migratory Bird Programs AKN Histogram Tools](#) webpage.

The tool is currently available for 4 regions (California, Northeast U.S., Southeast U.S. and Midwest), which encompasses the following 32 states: Alabama, Arkansas, California, Connecticut, Delaware, Florida, Georgia, Illinois, Indiana, Iowa, Kentucky, Louisiana, Maine, Maryland, Massachusetts, Michigan, Minnesota, Mississippi, Missouri, New Hampshire, New Jersey, New York, North Carolina, Ohio, Pennsylvania, Rhode Island, South Carolina, Tennessee, Vermont, Virginia, West Virginia, and Wisconsin.

In the near future, there are plans to expand this tool nationwide within the AKN, and allow the graphs produced to appear with the list of trust resources generated by IPaC, providing you with an additional level of detail about the level of occurrence of the species of particular concern potentially occurring in your project area throughout the course of the year.

Atlantic Seabirds:

For additional details about the relative occurrence and abundance of both individual bird species and groups of bird species within your project area off the Atlantic Coast, please visit the [Northeast Ocean Data Portal](#). The Portal also offers data and information about other taxa besides birds that may be helpful to you in your project review. Alternately, you may download the bird model results files underlying the portal maps through the NOAA NCCOS [Integrative Statistical Modeling and Predictive Mapping of Marine Bird Distributions and Abundance on the Atlantic Outer Continental Shelf project](#) webpage.

Facilities

Wildlife refuges

Any activity proposed on [National Wildlife Refuge](#) lands must undergo a 'Compatibility Determination' conducted by the Refuge. Please contact the individual Refuges to discuss any questions or concerns.

THERE ARE NO REFUGES AT THIS LOCATION.

Fish hatcheries

THERE ARE NO FISH HATCHERIES AT THIS LOCATION.

Wetlands in the National Wetlands Inventory

Impacts to [NWI wetlands](#) and other aquatic habitats may be subject to regulation under Section 404 of the Clean Water Act, or other State/Federal statutes.

For more information please contact the Regulatory Program of the local [U.S. Army Corps of Engineers District](#).

WETLAND INFORMATION IS NOT AVAILABLE AT THIS TIME

Data limitations

The Service's objective of mapping wetlands and deepwater habitats is to produce reconnaissance level information on the location, type and size of these resources. The maps are prepared from the analysis of high altitude imagery. Wetlands are identified based on vegetation, visible hydrology and geography. A margin of error is inherent in the use of imagery; thus, detailed on-the-ground inspection of any particular site may result in revision of the wetland boundaries or classification established through image analysis.

The accuracy of image interpretation depends on the quality of the imagery, the experience of the image analysts, the amount and quality of the collateral data and the amount of ground truth verification work conducted. Metadata should be consulted to determine the date of the source imagery used and any mapping problems.

Wetlands or other mapped features may have changed since the date of the imagery or field work. There may be occasional differences in polygon boundaries or classifications between the information depicted on the map and the actual conditions on site.

Data exclusions

Certain wetland habitats are excluded from the National mapping program because of the limitations of aerial imagery as the primary data source used to detect wetlands. These habitats include seagrasses or submerged aquatic vegetation that are found in the intertidal and subtidal zones of estuaries and nearshore coastal waters. Some deepwater reef communities (coral or tubercid worm reefs) have also been excluded from the inventory. These habitats, because of their depth, go undetected by aerial imagery.

Data precautions

Federal, state, and local regulatory agencies with jurisdiction over wetlands may define and describe wetlands in a different manner than that used in this inventory. There is no attempt, in either the design or products of this inventory, to define the limits of proprietary jurisdiction of any Federal, state, or local government or to

establish the geographical scope of the regulatory programs of government agencies. Persons intending to engage in activities involving modifications within or adjacent to wetland areas should seek the advice of appropriate federal, state, or local agencies concerning specified agency regulatory programs and proprietary jurisdictions that may affect such activities.

Not for consultation

NEW YORK STATE DEPARTMENT OF ENVIRONMENTAL CONSERVATION

Division of Fish and Wildlife, New York Natural Heritage Program
625 Broadway, Fifth Floor, Albany, NY 12233-4757
P: (518) 402-8935 | F: (518) 402-8925
www.dec.ny.gov

April 27, 2017

Marc Lawlor
TRC
1200 Wall Street West -- 5th Floor
Lyndhurst, NJ 07071

Re: Proposed improvements to 19 radio repeater/hub sites
County: Nassau, Suffolk Town/City: Babylon, Huntington, Islip, Riverhead, Southampton

Dear Mr. Lawlor:

In response to your recent request, we have reviewed the New York Natural Heritage Program database with respect to the above project.

Enclosed is a report of rare or state-listed animals and plants, and significant natural communities that our database indicates occur in the vicinity of two of the repeater sites.

For most sites, comprehensive field surveys have not been conducted; the enclosed report only includes records from our database. We cannot provide a definitive statement as to the presence or absence of all rare or state-listed species or significant natural communities. Depending on the nature of the project and the conditions at the project site, further information from on-site surveys or other sources may be required to fully assess impacts on biological resources.

Our database is continually growing as records are added and updated. If this proposed project is still under development one year from now, we recommend that you contact us again so that we may update this response with the most current information.

The presence of the plants and animals identified in the enclosed report may result in this project requiring additional review or permit conditions. For further guidance, and for information regarding other permits that may be required under state law for regulated areas or activities (e.g., regulated wetlands), please contact the NYS DEC Region 1 Office, Division of Environmental Permits, as listed at www.dec.ny.gov/about/39381.html.

Sincerely,



Nicholas Conrad
Information Resources Coordinator
New York Natural Heritage Program



**The following state-listed animals have been documented
in the vicinity of a repeater site.**

The following list includes animals that are listed by NYS as Endangered, Threatened, or Special Concern; and/or that are federally listed or are candidates for federal listing.

For information about any permit considerations for the project, contact the Permits staff at the NYSDEC Region 1 Office. For information about potential impacts of the project on these species, and how to avoid, minimize, or mitigate any impacts, contact the Wildlife Manager.

A listing of Regional Offices is at <http://www.dec.ny.gov/about/558.html>.

The following species has been documented nesting within 2/3 mile of the Great River site (Location no. 5).

COMMON NAME	SCIENTIFIC NAME	NY STATE LISTING	FEDERAL LISTING	
Bald Eagle Nesting	<i>Haliaeetus leucocephalus</i>	Threatened		14980

The following species have been documented within 1.5 miles of the Wildwood site (Location no. 19). Individual animals may travel 1.5 miles from documented locations.

COMMON NAME	SCIENTIFIC NAME	NY STATE LISTING	FEDERAL LISTING	
Mammals				
Northern Long-eared Bat Non-winter location	<i>Myotis septentrionalis</i>	Threatened	Threatened	14541

This report only includes records from the NY Natural Heritage database. For most sites, comprehensive field surveys have not been conducted, and we cannot provide a definitive statement as to the presence or absence of all rare or state-listed species. Depending on the nature of the project and the conditions at the project site, further information from on-site surveys or other sources may be required to fully assess impacts on biological resources.

If any rare plants or animals are documented during site visits, we request that information on the observations be provided to the New York Natural Heritage Program so that we may update our database.

Information about many of the listed animals in New York, including habitat, biology, identification, conservation, and management, are available online in Natural Heritage's Conservation Guides at www.guides.nynhp.org, and from NYSDEC at www.dec.ny.gov/animals/7494.html.



4425 Forbes Boulevard
Lanham, Maryland 20706

Main 301-306-6981
Fax 301-306-6986

March 15, 2017

Ms. Ruth Pierpont, Deputy Commissioner/Deputy SHPO
New York State Office of Parks, Recreation and Historic Preservation
Historic Preservation Field Services Bureau
Peebles Island Resource Center, PO Box 189
Waterford, NY 12188-0189

RE: Initial Consultation Request: PSEG LI Repeater Sites Project – Baldwin (4M) Tower Site

Dear Ms. Pierpont,

Public Service Enterprise Group Long Island LLC (PSEG LI), through its wholly-owned subsidiary, Long Island Electric Utility Servco LLC, acting as agent of and on behalf of Long Island Power Authority (LIPA), proposes improvements to 19 existing repeater/hub sites across Nassau and Suffolk Counties, Long Island, New York. The purpose of this work is to re-balance its Distribution Automation (DA) Radio System with technology upgrades and the addition of new frequencies and radios. The overall effort is part of PSEG LI's Federal Emergency Management Agency (FEMA) Hazard Mitigation Program to improve reliability and harden electric infrastructure against possible future storm damage. The work is subject to Federal Communications Commission (FCC) licensing requirements under Section 106 of the National Historic Preservation Act (NHPA), as amended, and Part 617 of the New York State Environmental Quality Review Act (SEQRA).

As the proposed Baldwin Tower is one of 19 proposed improvement projects at PSEG's facilities on Long Island, each of the proposed tower sites is undergoing a separate licensing review process. This letter seeks consultation with your agency as part of the environmental review process for the proposed Baldwin Tower under SEQRA.

The Baldwin Project site is located in the town of Baldwin, Nassau County, New York, on Harrison Ave. near the intersection of Harrison Ave. and Route 27 (Sunrise Hwy) within the fenced enclosure of an existing electrical substation. The Project involves the construction of a monopole free standing telecommunications tower measuring 100 ft (30.48 m) in height mounted with a 400MHz Omni antenna. Additional attachments will increase the height of the overall structure to 120 ft (36.58 m). The project also includes the construction of an accompanying 10-x-12-ft shelter, generator, and propane tank inside a footprint of 30-x-30 ft.

Area of Potential Effects

The Area of Potential Effects (APE) as defined in Sections II.A.3 and VI.C.1-4 of the NPA is the area or areas within which an undertaking may directly or indirectly cause alterations in the character or use of historic properties, if any such properties exist. The APE for direct effects is limited to the area of potential ground disturbance and any property, or any portion thereof, that will be physically altered or destroyed by the undertaking. The APE for visual effects is the geographic area in which the undertaking has the potential to introduce visual elements that diminish or alter the setting, including a landscape, where the setting is a character-defining feature of a historic property that makes it eligible for listing in the National Register of Historic Places (NRHP). Under the NPA, the presumed APE for visual effects for structures of 200 ft or less extends 0.5 miles from the tower site.

Background Research

Preliminary background research of the Project site and environs was conducted using the New York State Office of Parks, Recreation and Historic Preservation's online Cultural Resource Information System (CRIS) and the National Park Service (NPS), NRHP website. In addition, USGS topographic maps and the USDA NRCS web soil survey were also reviewed.

Archaeological Resources

A review of CRIS indicates the Project site falls within a non-archaeologically sensitive area and that no archaeological sites have been inventoried within 1 mile. The site located on the flat glacial outwash plain encompassing the southern portion of Long Island. However, the immediate site area is a built environment impacted by construction of the electrical substation facility and surrounding commercial and residential development. The USDA soil series mapped at this location is Urban land (Ug). . The project site is therefore considered to have a very low probability for undisturbed archaeological resources. TRC recommends that the proposed PSEG LI Baldwin Project will have no effect on archaeological resources.

Architectural Resources

The Project site is located adjacent to a small existing electrical substation within a heavily developed area of retail, commercial, and residential construction. The existing substation features an extensively altered ca. 1930 poured concrete and concrete-block control house building. Route 27 passes just north of the site. Several modern fast-food establishments stand immediately north. The surroundings are heavily developed with a combination of late nineteenth- and early twentieth-century residential subdivisions to the north, south, and west. The APE includes two large existing communications towers. One stands behind the local fire department on the corner of Grand Avenue and Prospect Street. A second occupies the southwest corner of Merrick Road and Harrison Avenue, adjacent to the police department.

The CRIS file search found three previously identified individual historic properties and one historic district eligible for listing in the NRHP within the 0.5-mile APE surrounding the Project site (Table 1).

Table 1. Historic Properties Within 0.5 Miles of the Baldwin Project Area

Site #	Site Name	Address	Distance and Direction	Current NRHP Status
05901.000522	First Church Baldwin United Methodist	881 Merrick Rd. Hempstead, NY	0.27 mi south	Eligible
05901.000567	Baldwin Public Library, 1962	2385 Grand Ave. Baldwin, NY	0.26 mi southwest	Eligible
05901.001035	Kellogg House, ca. 1899-1960	960 Merrick Rd. Hempstead, NY	0.3 mi south	Eligible
5903.001165	Jones Beach State Park, Causeway & Parkway System	District	N/A	Eligible

CRIS identifies the First Church Baldwin United Methodist building eligible for listing in the NRHP, but it does not contain documentation concerning its significance or eligibility criteria. A marker on the church grounds identifies the present building as constructed in 1871 by Lorenzo D. Smith. For the purposes of this investigation, the First Church Baldwin United Methodist building is considered significant under Criterion C in the area of architecture as an example of late nineteenth-century church architecture.

The Baldwin Public Library is eligible for listing on the State and NRHP under Criterion C in the area of architecture as an example of a Mid Century Modern design. The landscape, an important component of the Mid Century style, includes a public plaza, built-in planter boxes, and seating areas at the north corner of the property. A large modern addition to the south side of the building is distinct from the original block but repeats the use of metal framed window areas, opaque panels, and stone walls.

The ca. 1900 Kellogg House, is eligible for listing in the NRHP under Criterion C in the area of architecture as an outstanding intact example of an early twentieth-century Queen Anne-style residence significant to the local context as the last of its type in Baldwin. The property includes the dwelling house and a carriage house in the rear yard. Today, the buildings are vacant, boarded, and in disrepair. The rear yard has been converted into a parking lot for the benefit of the local police department headquartered across the street.

The Jones Beach State Park, Causeway & Parkway System was determined eligible for listing in the NRHP on February 2, 2017 under Criteria A and C. The CRIS system does not include additional documentation or justification. None of the historic property's identified contributing elements are located inside the APE.

Under the NPA, TRC recommends the proposed Babylon Tower will have no effect on Section 106 architectural historic properties. With the exception of the surrounding Jones Beach State Park, Causeway & Parkway System, each individual historic property is located nearly one-half mile southwest of the Project site on the edge of the APE. The effects of distance, diminishing perspective, and intervening obstructions will minimize any potential visual impact. The construction of the proposed Babylon Tower will not diminish the architectural significance or character-defining features of any of the historic properties. Existing communications towers opposite the Baldwin Public Library and directly across the street from both the First Church Baldwin United Methodist building and the Kellogg House already fill the viewshed. Because the Project site includes highly visible existing tower structures, and because the densely developed surrounding area features closely spaced buildings and mature tree plantings, potential visual impacts are considered minimal. It is recommended that the proposed Project will have no effect on unevaluated or unidentified architectural historic resources.

We look forward to receiving your concurrence with our recommendations that construction and operation of the Project will have no effect on cultural resources listed in or eligible for inclusion in the NRHP. Should you have any questions concerning the architectural survey, please contact Philip Hayden, Senior Architectural Historian at (301) 276-8044 or phayden@trcsolutions.com. For all other inquiries, or if you require additional information, please do not hesitate to contact me at (301) 276-8040, or tsara@trcsolutions.com.

Sincerely yours,



Timothy R. Sara, RPA
Program Manager, Cultural Resources

cc. S.Torvik, TRC
M. Burke, TRC
C. Biondich, TRC

P. Hayden, TRC

Attachments:

Figure 1: Detail of the PSEG LI Baldwin (4M) Project Area on the USGS *Freeport 7.5'* Topographic Quadrangles.

Figure 2: Detail of the PSEG LI Baldwin (4M) Project Area on aerial imagery (ESRI World Imagery 2016; SSURGO Soil Survey Geographic Database, accessed January 2017).

Figure 3: Current Baldwin Project Area Site Plan Depicting Proposed Tower Facilities.

Figure 4: Detail of the PSEG LI Baldwin (4M) Project Area Photo Location Map Depicting the 0.5-mile APE, with Historic Properties and Photo Location/Direction.

Photos 1 – 13 of the Baldwin Project Area.

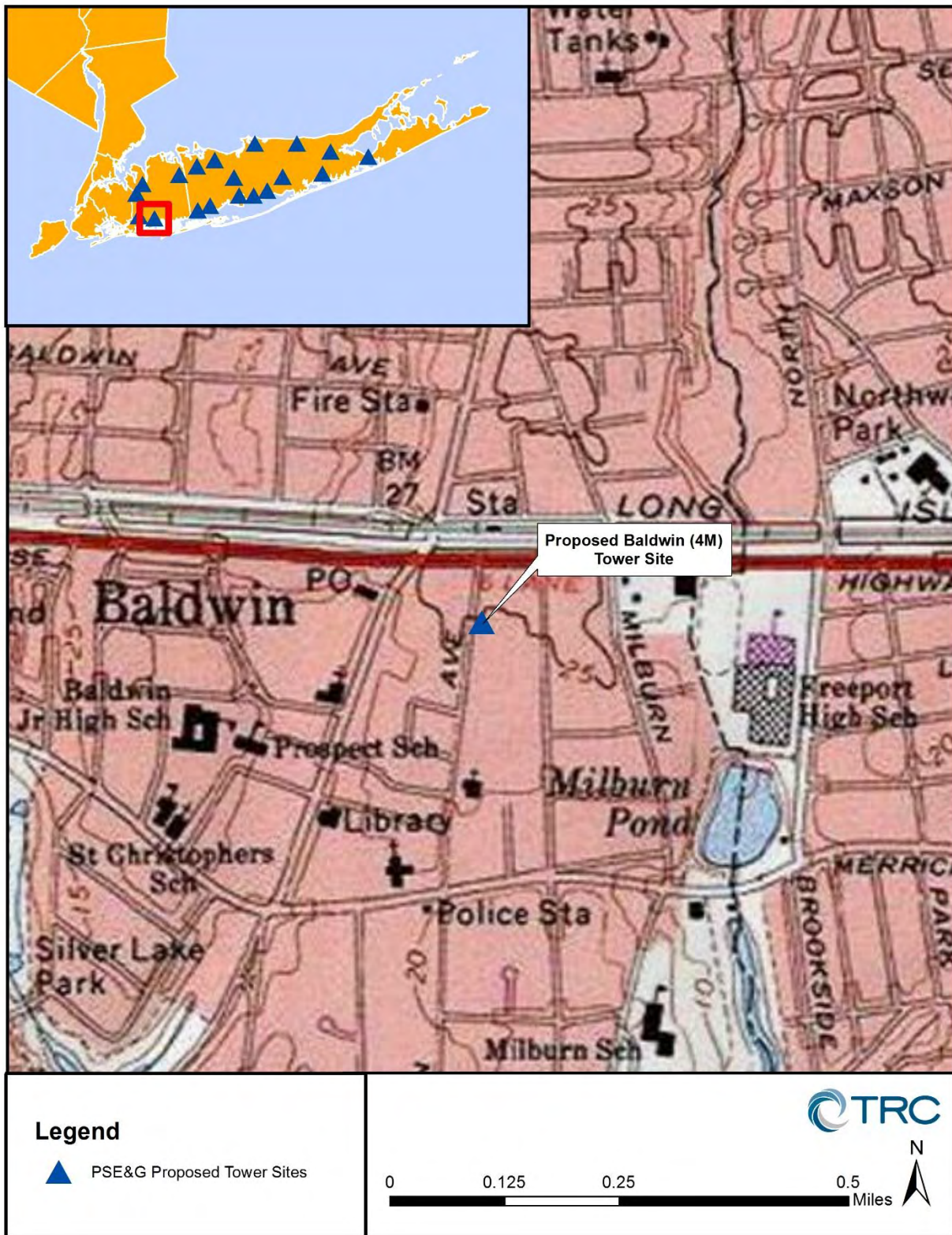


Figure 1: Detail of the PSE&G LI Baldwin (4M) Project Area on the USGS *Freeport 7.5'* Topographic Quadrangle.

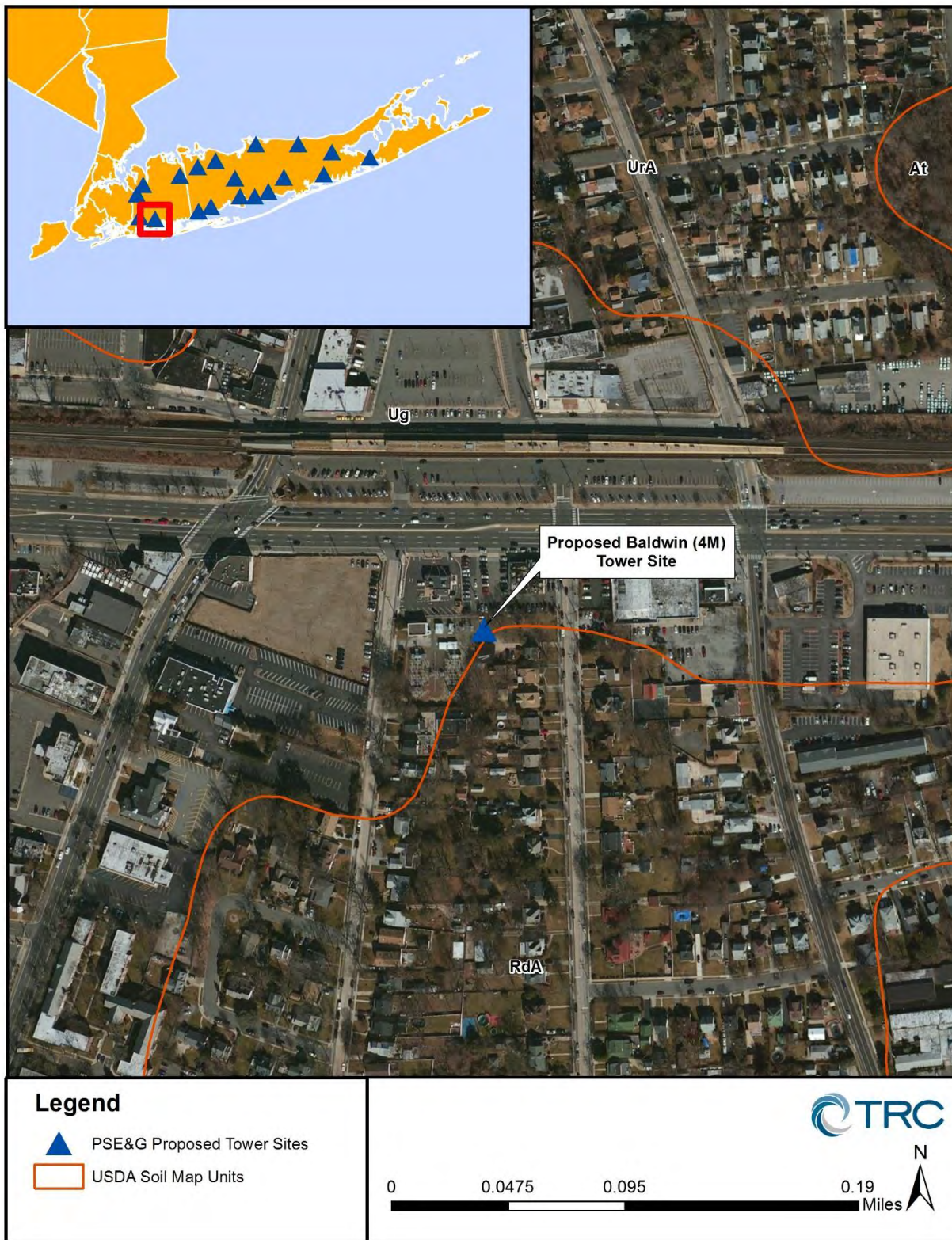


Figure 2: Detail of the PSE&G LI Baldwin (4M) Project Area on aerial imagery (ESRI World Imagery 2016; SSURGO Soil Survey Geographic Database, accessed January 2017).

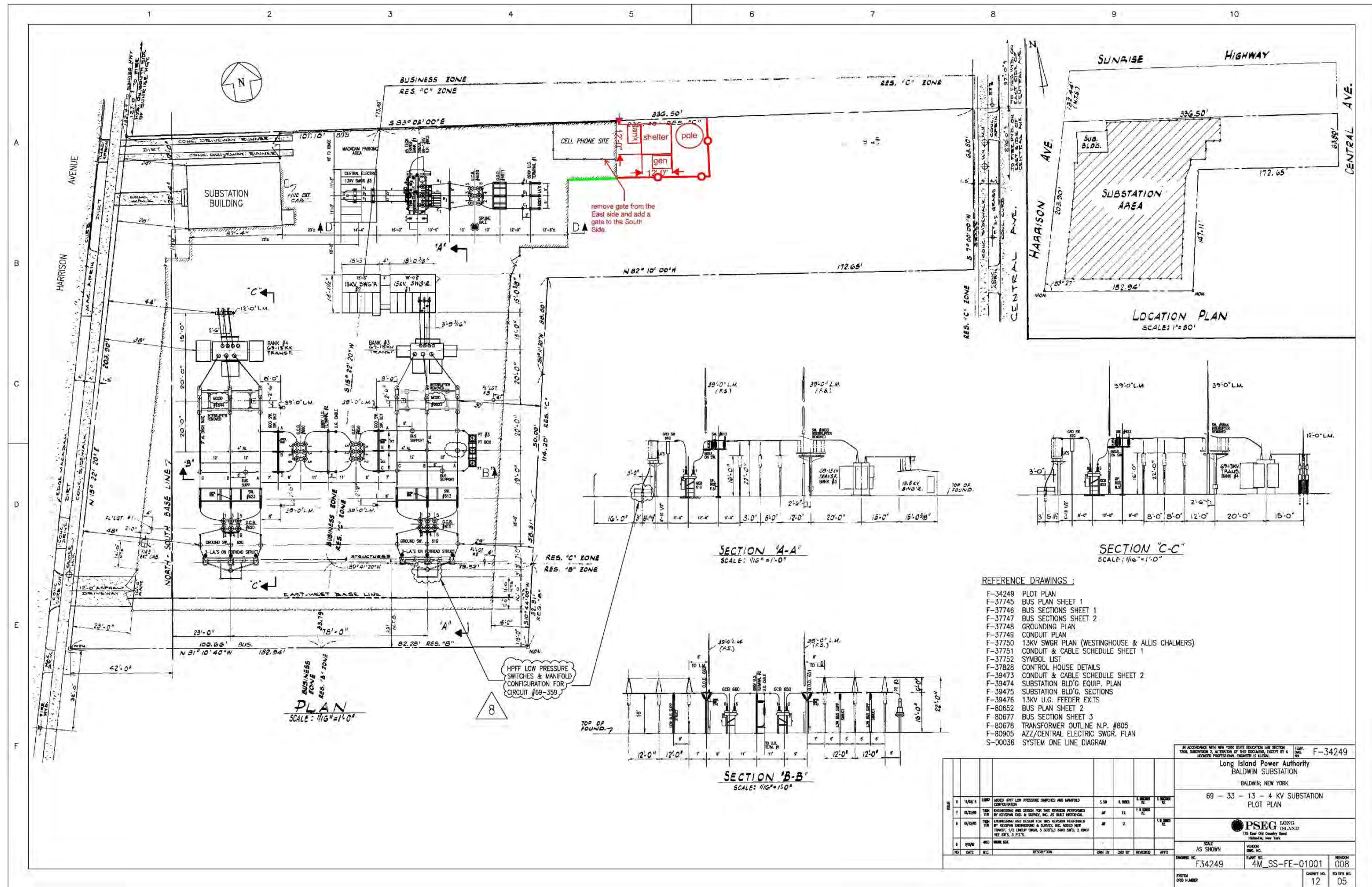


Figure 3: Current Baldwin Project Area Site Plan Depicting Proposed Tower Facilities.



Figure 4: Detail of the PSEG LI Baldwin (4M) Project Area Photo Location Map Depicting 0.5-mile APE, with Historic Properties and Photo Location/Direction.



Photo 1: Overview of PSEG LI Baldwin Project Area, looking northeast.



Photo 2: Overview of PSEG LI Baldwin Project Area from the proposed pole site, looking north.



Photo 3: Overview of PSEG LI Baldwin Project Area from the proposed pole site, looking southeast.



Photo 4: Overview of PSEG LI Baldwin Project Area from the proposed pole site, looking south.



Photo 5: Overview of PSEG LI Baldwin Project Area from the proposed pole site, looking west.



Photo 6: Overview of PSEG LI Baldwin Project Area depicting existing ca. 1930 substation control house building, looking northeast.



Photo 7: Overview of NRHP-eligible First Baldwin United Methodist Church (05901.000522), looking northwest.



Photo 8: Overview from vicinity of NRHP-eligible First Baldwin United Methodist Church (05901.000522), looking northeast toward PSEG LI Baldwin Project Area.



Photo 9: Overview of NRHP-eligible Baldwin Public Library (05901.000567), looking east.



Photo 10: Overview from NRHP-eligible Baldwin Public Library (05901.000567), looking northeast toward PSEG LI Baldwin Project Area.



Photo 11: Overview of NRHP-eligible Kellogg House (05901.001035), looking southwest. Note existing cellular tower within the viewshed at right.



Photo 12: Overview from NRHP-eligible Kellogg House (05901.001035), looking northeast toward PSEG LI Baldwin Project Area.



Photo 13: Overview from vicinity of NRHP-eligible Kellogg House (05901.001035), looking northwest toward NRHP-eligible First Baldwin United Methodist Church (05901.000522). Note proximity of existing cellular tower visible in left foreground.



Parks, Recreation, and Historic Preservation

ANDREW M. CUOMO
Governor

ROSE HARVEY
Commissioner

April 10, 2017

Mr. Tim Sara
Program Manager, Cultural Resources
TRC Environmental
4425 Forbes Blvd Suite B
Lanham, MD 20706

Re: FCC
PSEG LI Repeater Sites Project – Baldwin (4M) Tower Site
17PR01740

Dear Mr. Sara:

Thank you for requesting the comments of the New York State Historic Preservation Office (SHPO). We have reviewed the provided documentation in accordance with Section 106 of the National Historic Preservation Act of 1966. These comments are those of the SHPO and relate only to Historic/Cultural resources. They do not include other environmental impacts to New York State Parkland that may be involved in or near your project. Such impacts must be considered as part of the environmental review of the project pursuant to the National Environmental Policy Act and/or the State Environmental Quality Review Act (New York Environmental Conservation Law Article 8).

We have reviewed your submission for the Baldwin (4M) Tower Site project. Based on this review, our office concurs with the recommended finding that the proposed project will have No Effect to resources that are listed in or eligible for listing in the National Register of Historic Places.

If you have any questions, I can be reached at (518) 268-2164.

Sincerely,

Weston Davey
Historic Site Restoration Coordinator
weston.davey@parks.ny.gov

via e-mail only