

Long Island Power Authority

Statement of Locational System Relief Value ("LSRV") Areas

Applicable to those Rate Codes and Customers

Subject to the Phase One Value Stack

As set forth in the Tariff for Electric Service

Applicable to all metered accounts with Customer-generators subject to the Value Stack with rate codes within Service Classification Nos. 2L, 2L-VMRP, 2-MRP or 12.

The location-specific Locational System Relief Value ("LSRV"), will be set by each Large Customer Project at their in service date, for the period of ten years, based on the LSRV value for that location.

Current Substations in the Authorities service territory eligible for a LSRV are:

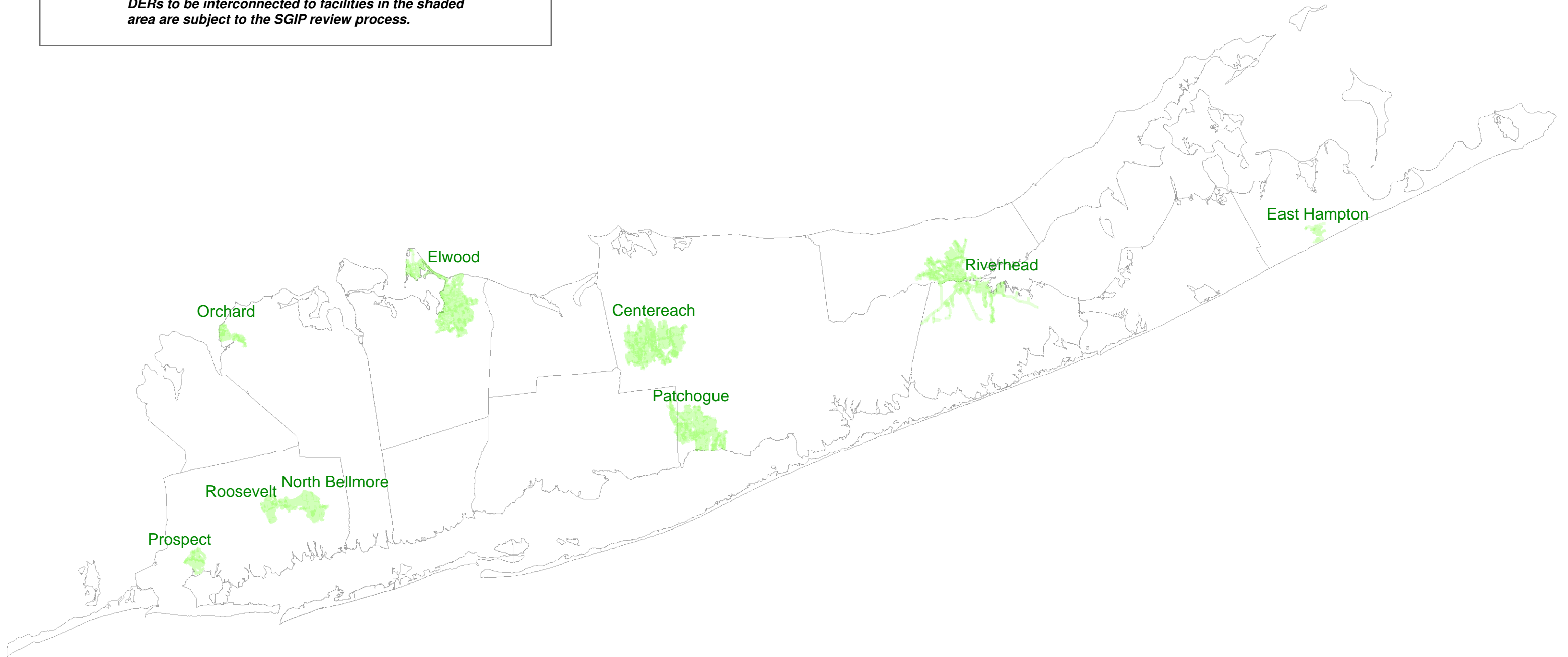
Substation Area	Circuits	Map
Centereach	8E-824, 8E-825, 8E-826, 8E-827, 8E-828, 8E-493, 8E-894	See Page 3
East Hampton	9L-782	See Page 4
Elwood	6RL-765, 6RL-766, 6RL-768, 6RL-955, 6RL-956	See Page 5
North Bellmore	5RK-261, 5RK-262, 5RK-263, 5RK-264	See Page 6
Orchard	4RH-321	See Page 7
Patchogue	8AX-047, 8AX-648, 8AX-649, 8AX-651, 8AX-652, 8AX-653, 8AX-654	See Page 8
Prospect	2QB-545, 2QB-546, 2QB-547, 2QB-548, 2QB-549, 2QB-551	See Page 9
Riverhead	9A-1P9, 9A-2N9, 9A-4N9, 9A-759, 9A-762, 9A-763	See Page 10
Roosevelt	4W-235	See Page 11

Effective: January 1, 2018

Long Island Power Authority

Valuation of Distributed Energy Resources (VDER) Locational System Relief Value (LSRV) Area Maps

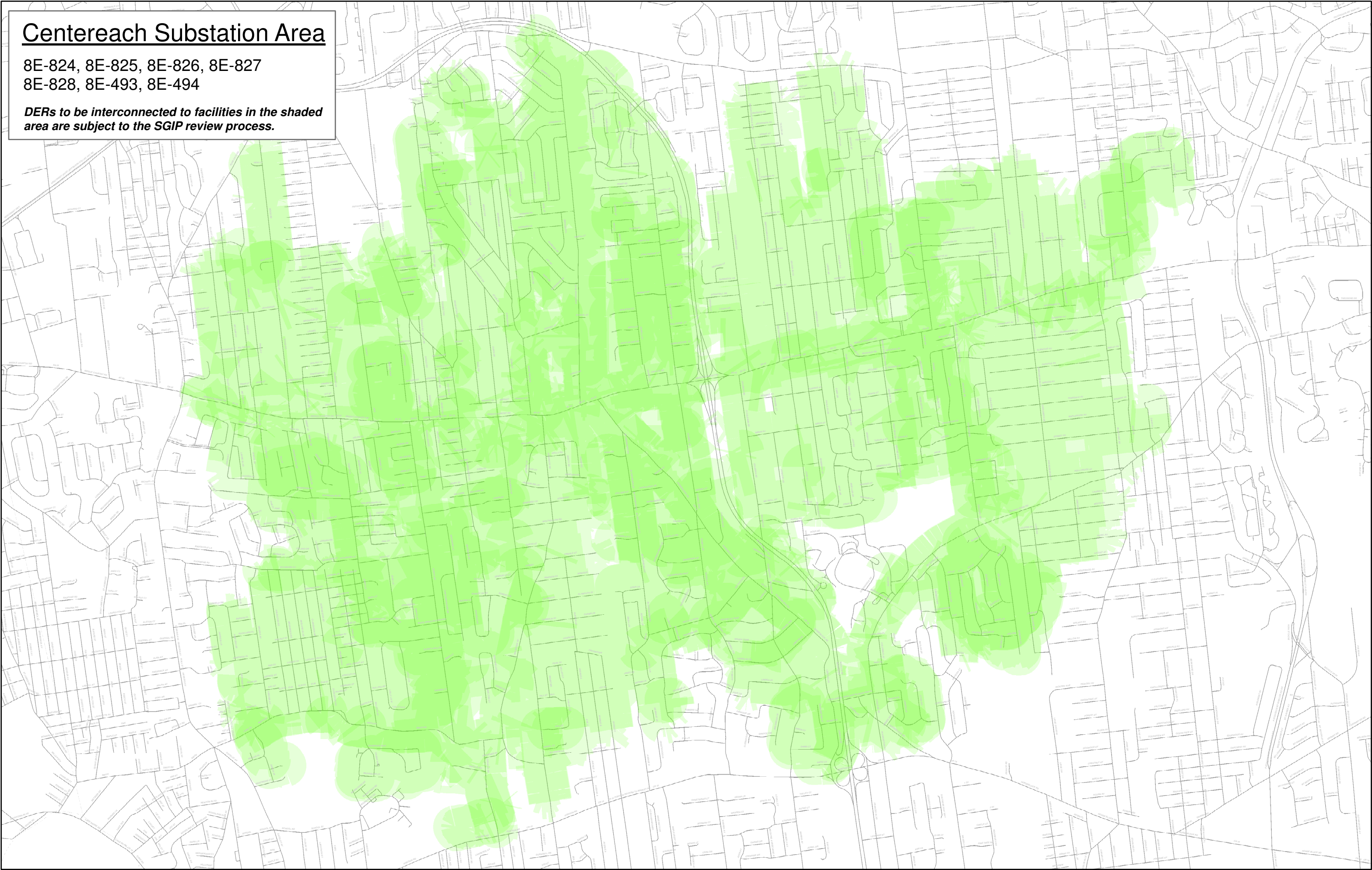
*DERs to be interconnected to facilities in the shaded
area are subject to the SGIP review process.*



Centereach Substation Area

8E-824, 8E-825, 8E-826, 8E-827
8E-828, 8E-493, 8E-494

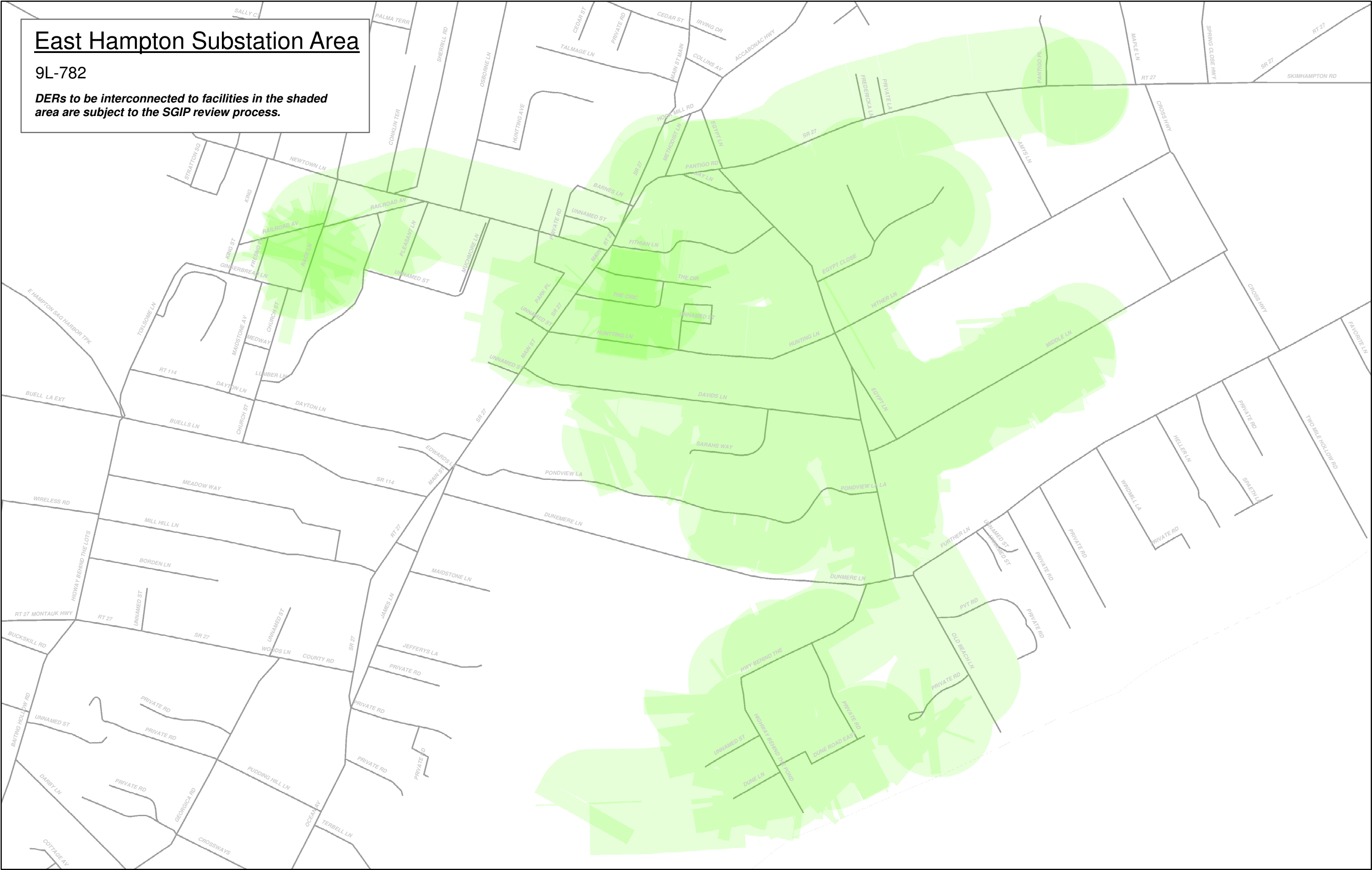
DERs to be interconnected to facilities in the shaded area are subject to the SGIP review process.



East Hampton Substation Area

9L-782

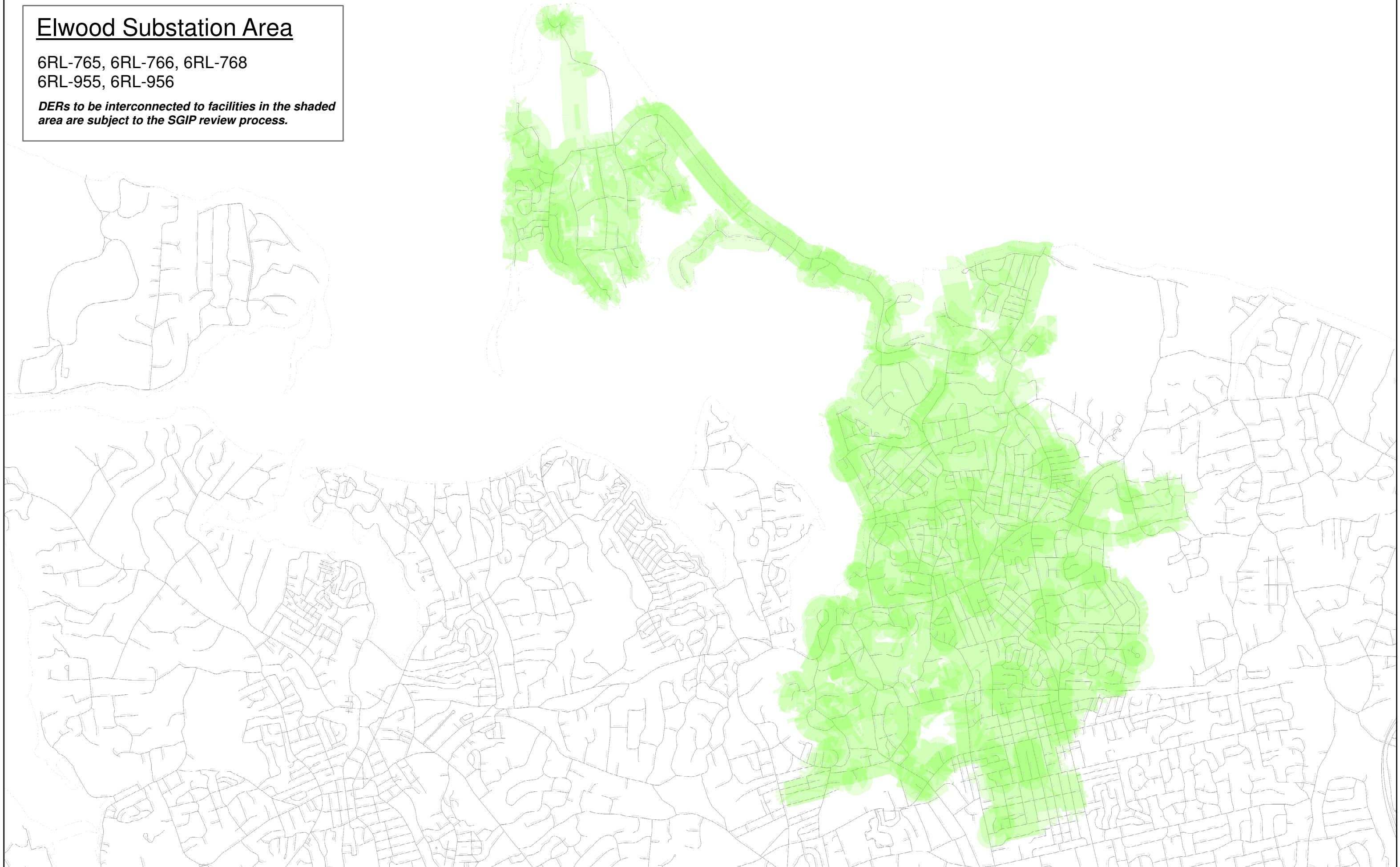
DERs to be interconnected to facilities in the shaded area are subject to the SGIP review process.



Elwood Substation Area

6RL-765, 6RL-766, 6RL-768
6RL-955, 6RL-956

DERs to be interconnected to facilities in the shaded area are subject to the SGIP review process.



North Bellmore Substation Area

5RK-261, 5RK-262, 5RK-263, 5RK-264

DERs to be interconnected to facilities in the shaded area are subject to the SGIP review process.

The map shows a detailed street grid in North Bellmore, New York. A large, irregularly shaped area is highlighted in light green, representing the substation's service area. This area covers a significant portion of the northern and central parts of the map. The streets are labeled with names such as 1st St, 2nd St, 3rd St, 4th St, 5th St, 6th St, 7th St, 8th St, 9th St, 10th St, 11th St, 12th St, 13th St, 14th St, 15th St, 16th St, 17th St, 18th St, 19th St, 20th St, 21st St, 22nd St, 23rd St, 24th St, 25th St, 26th St, 27th St, 28th St, 29th St, 30th St, 31st St, 32nd St, 33rd St, 34th St, 35th St, 36th St, 37th St, 38th St, 39th St, 40th St, 41st St, 42nd St, 43rd St, 44th St, 45th St, 46th St, 47th St, 48th St, 49th St, 50th St, 51st St, 52nd St, 53rd St, 54th St, 55th St, 56th St, 57th St, 58th St, 59th St, 60th St, 61st St, 62nd St, 63rd St, 64th St, 65th St, 66th St, 67th St, 68th St, 69th St, 70th St, 71st St, 72nd St, 73rd St, 74th St, 75th St, 76th St, 77th St, 78th St, 79th St, 80th St, 81st St, 82nd St, 83rd St, 84th St, 85th St, 86th St, 87th St, 88th St, 89th St, 90th St, 91st St, 92nd St, 93rd St, 94th St, 95th St, 96th St, 97th St, 98th St, 99th St, 100th St, 101st St, 102nd St, 103rd St, 104th St, 105th St, 106th St, 107th St, 108th St, 109th St, 110th St, 111th St, 112th St, 113th St, 114th St, 115th St, 116th St, 117th St, 118th St, 119th St, 120th St, 121st St, 122nd St, 123rd St, 124th St, 125th St, 126th St, 127th St, 128th St, 129th St, 130th St, 131st St, 132nd St, 133rd St, 134th St, 135th St, 136th St, 137th St, 138th St, 139th St, 140th St, 141st St, 142nd St, 143rd St, 144th St, 145th St, 146th St, 147th St, 148th St, 149th St, 150th St, 151st St, 152nd St, 153rd St, 154th St, 155th St, 156th St, 157th St, 158th St, 159th St, 160th St, 161st St, 162nd St, 163rd St, 164th St, 165th St, 166th St, 167th St, 168th St, 169th St, 170th St, 171st St, 172nd St, 173rd St, 174th St, 175th St, 176th St, 177th St, 178th St, 179th St, 180th St, 181st St, 182nd St, 183rd St, 184th St, 185th St, 186th St, 187th St, 188th St, 189th St, 190th St, 191st St, 192nd St, 193rd St, 194th St, 195th St, 196th St, 197th St, 198th St, 199th St, 200th St, 201st St, 202nd St, 203rd St, 204th St, 205th St, 206th St, 207th St, 208th St, 209th St, 210th St, 211th St, 212th St, 213th St, 214th St, 215th St, 216th St, 217th St, 218th St, 219th St, 220th St, 221st St, 222nd St, 223rd St, 224th St, 225th St, 226th St, 227th St, 228th St, 229th St, 230th St, 231st St, 232nd St, 233rd St, 234th St, 235th St, 236th St, 237th St, 238th St, 239th St, 240th St, 241st St, 242nd St, 243rd St, 244th St, 245th St, 246th St, 247th St, 248th St, 249th St, 250th St, 251st St, 252nd St, 253rd St, 254th St, 255th St, 256th St, 257th St, 258th St, 259th St, 260th St, 261st St, 262nd St, 263rd St, 264th St, 265th St, 266th St, 267th St, 268th St, 269th St, 270th St, 271st St, 272nd St, 273rd St, 274th St, 275th St, 276th St, 277th St, 278th St, 279th St, 280th St, 281st St, 282nd St, 283rd St, 284th St, 285th St, 286th St, 287th St, 288th St, 289th St, 290th St, 291st St, 292nd St, 293rd St, 294th St, 295th St, 296th St, 297th St, 298th St, 299th St, 300th St, 301st St, 302nd St, 303rd St, 304th St, 305th St, 306th St, 307th St, 308th St, 309th St, 310th St, 311th St, 312th St, 313th St, 314th St, 315th St, 316th St, 317th St, 318th St, 319th St, 320th St, 321st St, 322nd St, 323rd St, 324th St, 325th St, 326th St, 327th St, 328th St, 329th St, 330th St, 331st St, 332nd St, 333rd St, 334th St, 335th St, 336th St, 337th St, 338th St, 339th St, 340th St, 341st St, 342nd St, 343rd St, 344th St, 345th St, 346th St, 347th St, 348th St, 349th St, 350th St, 351st St, 352nd St, 353rd St, 354th St, 355th St, 356th St, 357th St, 358th St, 359th St, 360th St, 361st St, 362nd St, 363rd St, 364th St, 365th St, 366th St, 367th St, 368th St, 369th St, 370th St, 371st St, 372nd St, 373rd St, 374th St, 375th St, 376th St, 377th St, 378th St, 379th St, 380th St, 381st St, 382nd St, 383rd St, 384th St, 385th St, 386th St, 387th St, 388th St, 389th St, 390th St, 391st St, 392nd St, 393rd St, 394th St, 395th St, 396th St, 397th St, 398th St, 399th St, 400th St, 401st St, 402nd St, 403rd St, 404th St, 405th St, 406th St, 407th St, 408th St, 409th St, 410th St, 411th St, 412th St, 413th St, 414th St, 415th St, 416th St, 417th St, 418th St, 419th St, 420th St, 421st St, 422nd St, 423rd St, 424th St, 425th St, 426th St, 427th St, 428th St, 429th St, 430th St, 431st St, 432nd St, 433rd St, 434th St, 435th St, 436th St, 437th St, 438th St, 439th St, 440th St, 441st St, 442nd St, 443rd St, 444th St, 445th St, 446th St, 447th St, 448th St, 449th St, 450th St, 451st St, 452nd St, 453rd St, 454th St, 455th St, 456th St, 457th St, 458th St, 459th St, 460th St, 461st St, 462nd St, 463rd St, 464th St, 465th St, 466th St, 467th St, 468th St, 469th St, 470th St, 471st St, 472nd St, 473rd St, 474th St, 475th St, 476th St, 477th St, 478th St, 479th St, 480th St, 481st St, 482nd St, 483rd St, 484th St, 485th St, 486th St, 487th St, 488th St, 489th St, 490th St, 491st St, 492nd St, 493rd St, 494th St, 495th St, 496th St, 497th St, 498th St, 499th St, 500th St, 501st St, 502nd St, 503rd St, 504th St, 505th St, 506th St, 507th St, 508th St, 509th St, 510th St, 511th St, 512th St, 513th St, 514th St, 515th St, 516th St, 517th St, 518th St, 519th St, 520th St, 521st St, 522nd St, 523rd St, 524th St, 525th St, 526th St, 527th St, 528th St, 529th St, 530th St, 531st St, 532nd St, 533rd St, 534th St, 535th St, 536th St, 537th St, 538th St, 539th St, 540th St, 541st St, 542nd St, 543rd St, 544th St, 545th St, 546th St, 547th St, 548th St, 549th St, 550th St, 551st St, 552nd St, 553rd St, 554th St, 555th St, 556th St, 557th St, 558th St, 559th St, 560th St, 561st St, 562nd St, 563rd St, 564th St, 565th St, 566th St, 567th St, 568th St, 56

North Bellmore Substation Area

5RK-261, 5RK-262, 5RK-263, 5RK-264

DERs to be interconnected to facilities in the shaded area are subject to the SGIP review process.

The map illustrates the North Bellmore Substation Area, which is shaded in light green. The area is characterized by a dense network of streets and a large, irregularly shaped green region. The map includes a legend in the top left corner, which states: "DERs to be interconnected to facilities in the shaded area are subject to the SGIP review process." The map also shows various street names and a large, irregularly shaped green area that covers a significant portion of the map. The green area is composed of many small, irregular shapes, suggesting a complex boundary or a collection of individual properties. The map is oriented with North at the top, and the green area is located in the central and eastern portions of the map. The map is a detailed street map, showing individual lots and street names. The green area is a key feature of the map, indicating the substation's service territory. The legend provides important information about the green area, stating that DERs to be interconnected to facilities in the shaded area are subject to the SGIP review process. This information is crucial for understanding the map's purpose and the implications of the green area. The map is a valuable tool for understanding the North Bellmore Substation Area and the locations of DERs to be interconnected. The green area is a key feature of the map, indicating the substation's service territory. The legend provides important information about the green area, stating that DERs to be interconnected to facilities in the shaded area are subject to the SGIP review process. This information is crucial for understanding the map's purpose and the implications of the green area. The map is a valuable tool for understanding the North Bellmore Substation Area and the locations of DERs to be interconnected.

North Bellmore Substation Area

5RK-261, 5RK-262, 5RK-263, 5RK-264

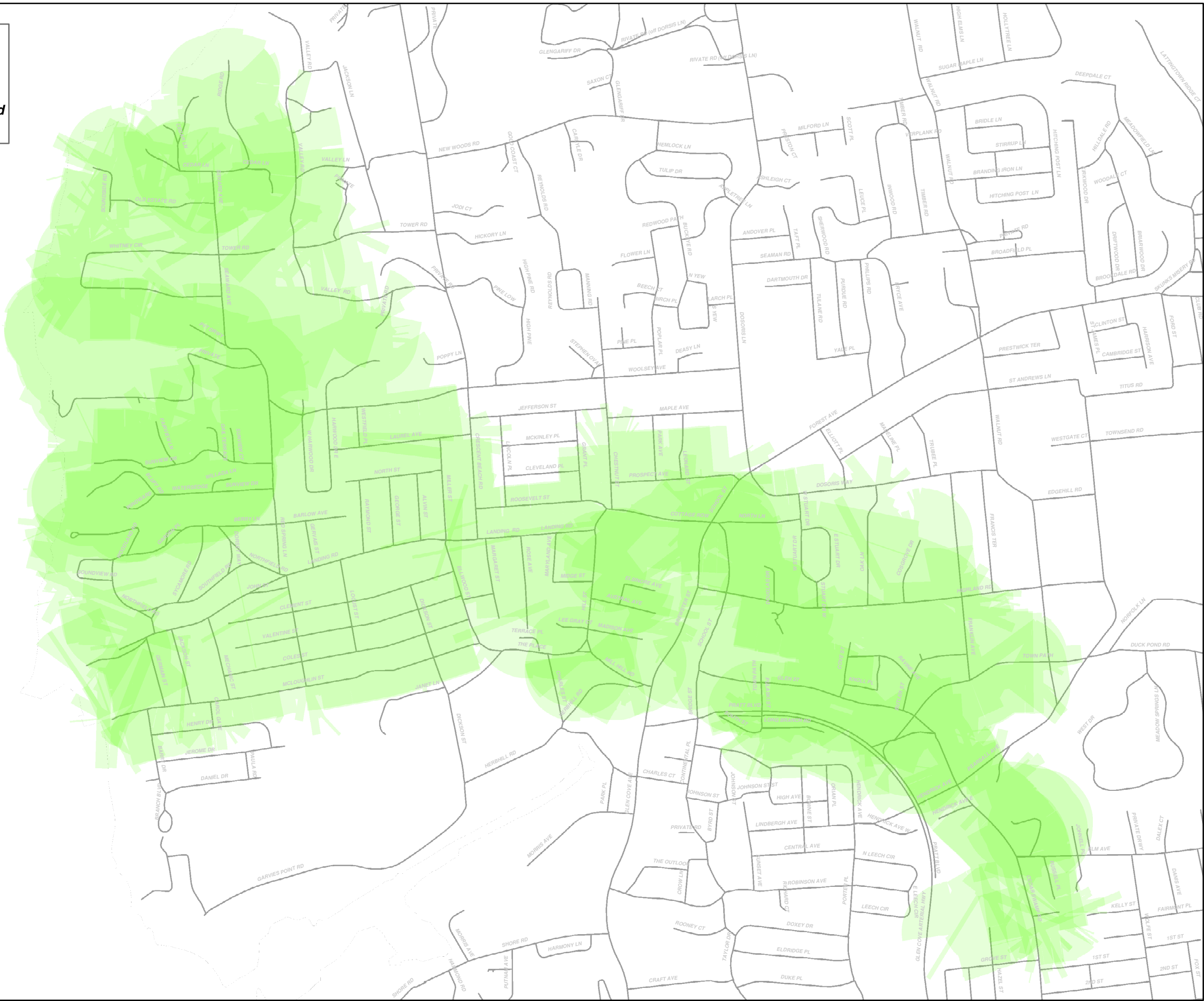
DERs to be interconnected to facilities in the shaded area are subject to the SGIP review process.

The map illustrates the North Bellmore Substation Area, which is shaded in light green. The area is characterized by a dense network of residential streets. The shaded region covers a large portion of the map, extending from the top left towards the bottom right. The legend in the top left corner indicates that DERs to be interconnected to facilities in the shaded area are subject to the SGIP review process.

Orchard Substation Area

4RH-321

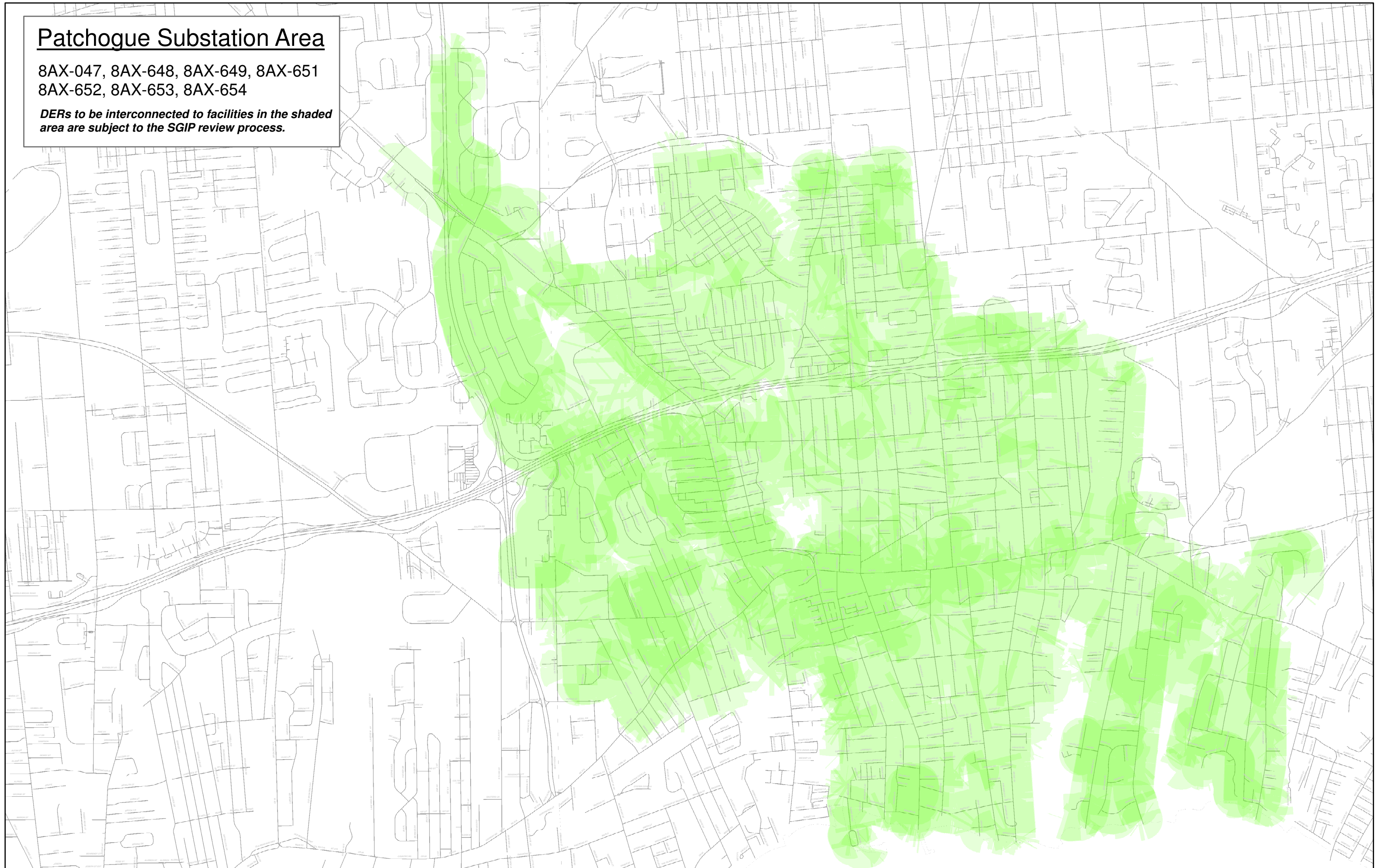
DERs to be interconnected to facilities in the shaded area are subject to the SGIP review process.



Patchogue Substation Area

8AX-047, 8AX-648, 8AX-649, 8AX-651
8AX-652, 8AX-653, 8AX-654

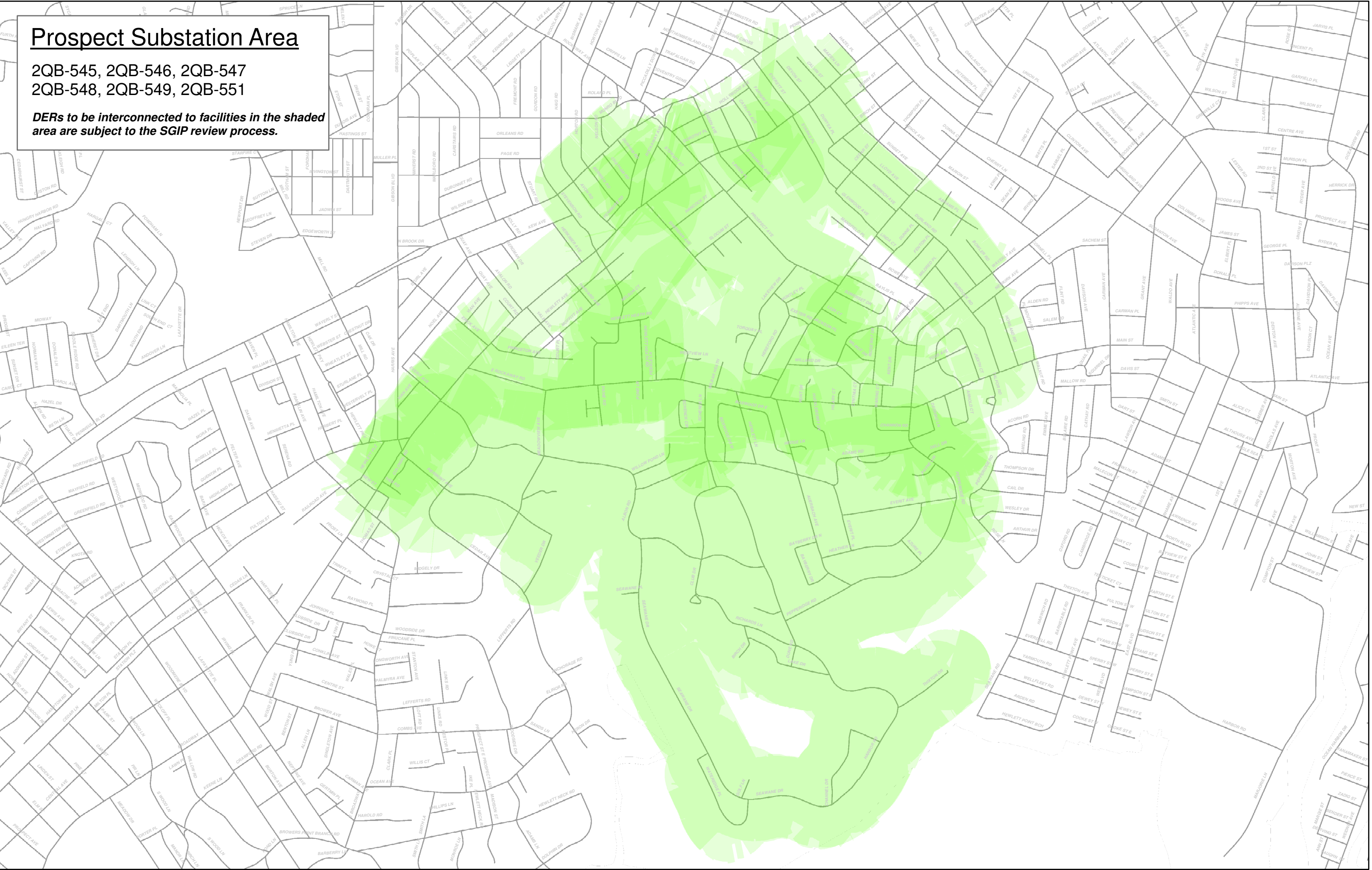
DERs to be interconnected to facilities in the shaded area are subject to the SGIP review process.



Prospect Substation Area

2QB-545, 2QB-546, 2QB-547
2QB-548, 2QB-549, 2QB-551

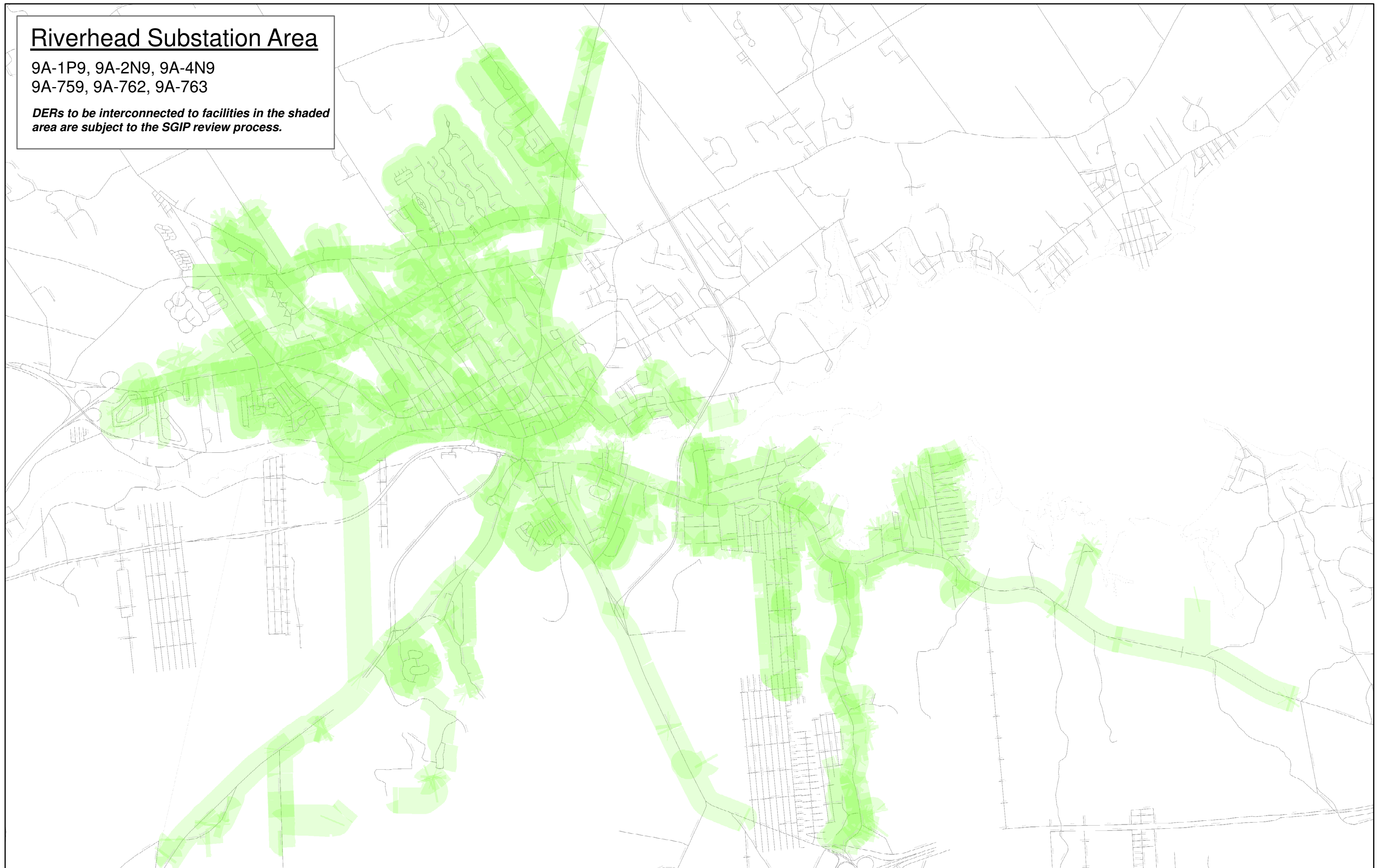
DERs to be interconnected to facilities in the shaded area are subject to the SGIP review process.



Riverhead Substation Area

9A-1P9, 9A-2N9, 9A-4N9
9A-759, 9A-762, 9A-763

DERs to be interconnected to facilities in the shaded area are subject to the SGIP review process.



Roosevelt Substation Area

4W-235

DERs to be interconnected to facilities in the shaded area are subject to the SGIP review process.

