



2025 Utility 2.0 Plan and Building Efficiency & Electrification Annual Update

Public Information Session

Dan Zaweski, Manager, Energy Efficiency and Renewables

August 2025





Dan Zaweski

***Manager – Planning & Evaluation
Energy Efficiency and Renewables***



Resources:

2025 Utility 2.0 Plan Update (dps.ny.gov) : Matter 14-01299

PSEG Long Island Home Comfort + Efficiency Programs (www.psegliny.com)

Agenda

- 01** Utility 2.0 and BEE Plan Overview
- 02** PSEG Long Island's Progress towards State Goals
- 03** 2026 Utility 2.0 and BEE Total Funding Request
- 04** Building Efficiency & Electrification Updates
- 05** Transportation Electrification Updates
- 06** Demand Flexibility & DER Updates

2025 Utility 2.0 Filing and BEE Plan Overview

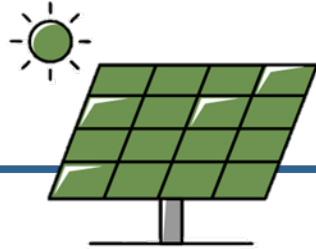
- **Goals:** Transform the energy system, decarbonize the economy, support disadvantaged communities (DACs) and low-to-moderate income (LMI) customers, and focus on energy affordability.
- **2025 Utility 2.0 Plan:** Review of project accomplishments, one-year outlook on active programs, and proposal for a **new NWA Retail Energy Storage Evaluation** project.
- **2026 Building Efficiency & Electrification (BEE) Plan:** Planned incentives and rebates for residential and commercial customers to reduce energy usage with increased focus on residential weatherization.
- **Funding:** Utility 2.0 Program Budget of **\$23.39 M** (\$9.69 M CAPEX; \$13.70 M O&M) and **BEE budget** of **\$88.33 M**. **Total = \$111.72 M**
- **Clean Energy Objectives:** PSEG Long Island and LIPA work with the DPS to advance the state's clean energy objectives by improving energy efficiency, expanding heat pump adoption, increasing Electric Vehicle (EV) infrastructure, and advancing Distributed Energy Resources (DERs).
- **Delivering Benefits to Disadvantaged Communities (DACs):** PSEG Long Island is committed to developing and delivering programs, services, and other offerings to support low-income customers, including customers in geographically disadvantaged communities.
- **Other Programs – IEDR Platform:** PSEG Long Island continues to coordinate with the state and involved stakeholders to develop an IEDR platform to satisfy the NYS PSC Order and deliver upon requested data access use cases.

PSEG Long Island Supports Statewide Goals

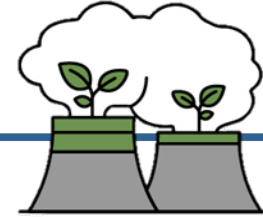
*PSEG Long Island supports New York State clean energy goals and objectives detailed in the **Climate Leadership and Community Protection Act (CLCPA or Climate Act)**.*



**Building Efficiency
& Electrification**



Solar PV



Energy Storage



**Transportation
Electrification**



- **6,000 MW DC** of solar energy
- **1,500 MW** of energy storage
- **185 TBtu** reduction in energy efficiency from forecasted 2025 energy demand
- **5 TBtu** reduction in energy consumption through heat pump installations (130,435)
- **9,000 MW** of offshore wind
- **100% new passenger cars** sold in NYS to be zero-emissions
- Electrifying the state's light-duty fleet and **100% of school buses**
- **100%** new medium and heavy-duty vehicles (**MHDV**) sales to be zero-emissions

2025

2030

2035

2040

2045

2050

- **10,000 MW DC** of solar energy
- **6,000 MW** of energy storage
- **1 million electrified** and **1 million electrification-ready** homes
- **100% zero-emission electricity**
- **40% reduction** in greenhouse gas emissions from 1990 levels
- **85% reduction** in greenhouse gas emissions from 1990 levels

2026 Utility 2.0 and BEE Total Funding Request

PSEG Long Island requests a total of \$23.39 million in Utility 2.0 funding (\$9.96 million in Capital and \$13.70 million in O&M) for 3 active and 1 proposed initiative in 2026.

CUSTOMER INSIGHTS	INITIATIVE NAME	2025 STATUS	2026 STATUS	CAPITAL 2026 (\$M)	O&M 2026 (\$M)	TOTAL 2026 (\$M)
	IEDR Platform	Active	Active	2.70	0.30	3.00
TRANSPORTATION ELECTRIFICATION	Electric Vehicle Programs	Active	Active	4.11	0.99	5.10
	Demand Charge Rebate	Active	Active	–	0.15	0.15
	EV Phase-In Rate	Active	Active	4.11	–	4.11
	Residential Charger Rebate Program	Active	Active	–	0.59	0.59
	Make-Ready Programs	Active	Active	2.88	12.36	15.19
	EV Make-Ready Program	Active	Active	1.08	11.04	12.11
	Fleet Make-Ready Program	Active	Active	1.81	1.28	3.08
	Suffolk County Bus Make-Ready Pilot	Active	Operational	–	–	–
DER	Connected Buildings Pilot	Active	Complete	–	–	–
	NWA Retail Energy Storage Evaluation	Proposed	TBD	–	0.10	0.10
Utility 2.0 Programs				9.69	13.70	23.39
Building Efficiency & Electrification Programs				–	88.33	88.33
Utility 2.0 + Building Efficiency & Electrification TOTAL				9.69	102.03	111.72

2026 Building Efficiency & Electrification Funding Request

*PSEG Long Island requests a total of **\$88.33 million** to support funding for the EE Department, of which **\$80.67 million** is dedicated to support the Building Efficiency & Electrification programs and the **net balance** is dedicated to support the DLM Tariff Program, Utility 2.0 Support Contract, and other Labor/G&A/Evaluation components for 2026.*

PROGRAM NAMES	ANNUAL ENERGY SAVINGS (MMBtu)	LIFETIME ENERGY SAVINGS (LMMBtu-e)	2026 PROGRAM BUDGET (\$M)
Residential Space Heating (4,555 Dwellings)	235,687	5,426,343	26.18
Residential Water Heating	10,571	211,430	1.40
Residential Building Envelope	22,133	530,804	10.71
Residential Efficient Products	114,690	1,257,604	2.11
Residential Income-qualified (REAP)	11,187	132,252	—
Commercial	89,285	1,343,684	8.75
Multi-Family	35,869	824,980	2.89
NYS Home and Community Renewal (HCR) Program	—	—	2.43
Total Rebates / Incentives	519,422	9,727,097	54.47
Services Fee (Implementation Contract) ¹	-	-	-
Budget Components (including DLM Tariff)	-	-	-
Total Building Efficiency & Electrification (BEE) Budget	519,422	9,727,097	88.33

¹ There is a solicitation currently open for the BEE Implementation Contract and pricing for Services Fees will be confirmed upon final contract award.



Building Efficiency & Electrification Updates



On May 15th, the Public Service Commission (PSC) issued the Orders Authorizing LMI¹ and Non-LMI² EEBE Portfolios for 2026 through 2030.



PSEG Long Island considers 2026 as a year of transition and has begun aligning to the guidelines established in the LMI and Non-LMI PSC Orders.

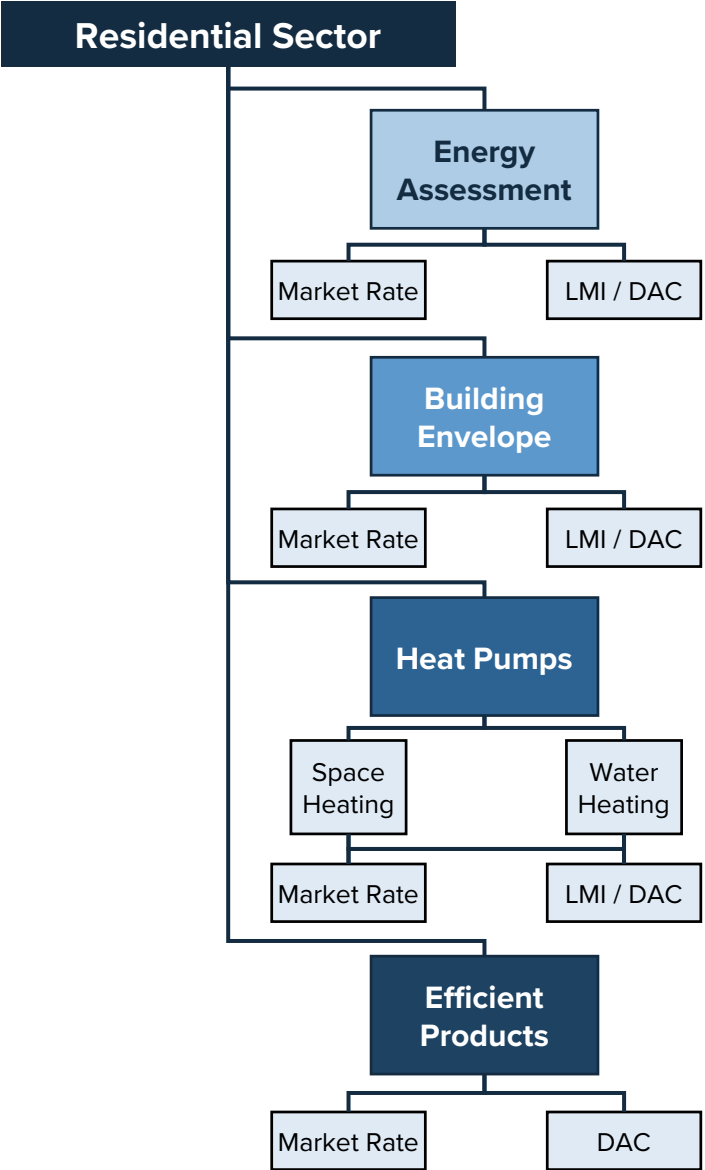
Summary of <u>PSC Orders (with targets):</u>	Summary of <u>PSEG Long Island's Revised Portfolio:</u>
<ul style="list-style-type: none">❑ Target 80% of annual budget for EE/BE projects (i.e., “Money out the Door”)❑ 25% (at least) of BEE budget spent on Weatherization (Small Residential)❑ 50% (at most) of BEE budget spent on Heat Pumps❑ Market rate weatherization to be planned on a regional basis for consistency❑ 85% (at least) of budget should support Strategic measures, with up to 15% Neutral❑ Prohibit ratepayer funds to rebate Lighting (Residential and non-Residential), Appliances, and Home Energy Reports❑ 30% of budget for LMI; Able to use 60% of AMI or SMI❑ NYSERDA to lead and administer the statewide LMI Program (one- to four-family)	<ul style="list-style-type: none">❑ 76% of budget directly serving customers (i.e., “Money out the Door (MOTD)”)<ul style="list-style-type: none">❑ 41% of MOTD spending allocated for LMI customers❑ 18% of budget for Weatherization (Small Residential → one- to four-family homes)❑ 56% of budget to support Heat Pumps❑ PSEG Long Island Marketplace will <u>continue</u>❑ 95% of budget for Strategic Measures and 5% for Neutral measures❑ Aligns with NYSERDA on the statewide LMI Program on the direct install component❑ Adopt 60% Area Median Income threshold for all income qualified offerings – incentives vary between customers at 60% SMI and 60% AMI❑ Lifetime Energy Savings (MMBtu) being developed

¹ Order authorizing Low- to Moderate-Income (LMI) Energy Efficiency and Building Electrification Portfolio for 2026-2030 ([25-M-0249](#))

² Order Authorizing Non-Low- to Moderate-Income (Non-LMI) Energy Efficiency and Building Electrification Portfolio for 2026-2030 ([25-M-0248](#))

SMI = State Median Income; AMI = Area Median Income

PSEG Long Island will target ~5,755 whole-house heat pumps (dwelling units) for 2026 (4,555 single-family; 1,200 Multi-Family).

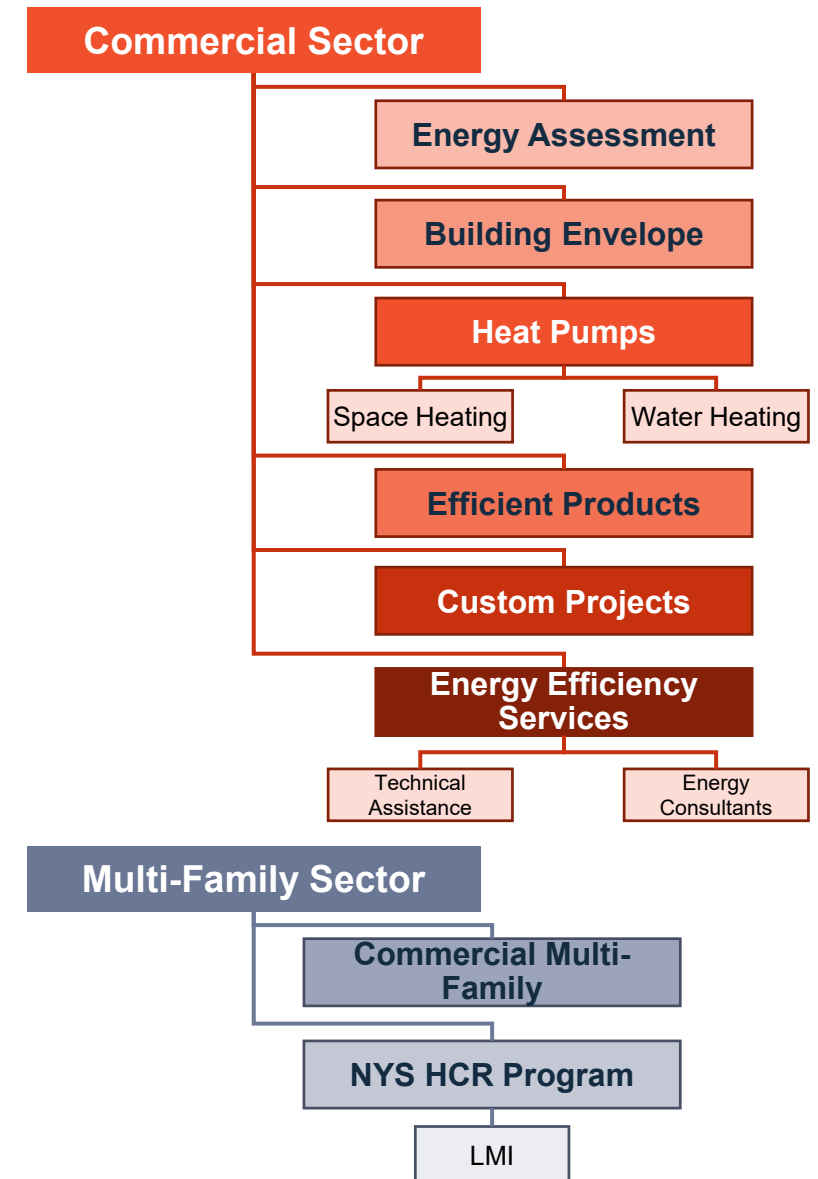


- Increased number of projects and rebates per project for **Residential Weatherization** (Market and Low-income)
- **Residential Efficient Products Program:**
 - Limited to **Smart Thermostats only**
 - **Eliminated rebates for appliances** (including Induction Cooktop, Combo Heat Pump Washer/Dryer, Dehumidifier, and Heat Pump Pool Heater)
 - Discontinued **Midstream** component
- **Income-qualified Program** (currently known as **REAP**)
 - Aligned the Direct Install component and rebates with NYSERDA Program
 - Eliminated direct installation of appliances such as Air Conditioner, Air Purifier, and Dehumidifier
 - Increased Weatherization projects and Smart Thermostats installs

The NYS Homes and Community Renewal (HCR) Program (administered by LIPA) will request approximately **\$2.43 million** for 2026.



- The **Energy Assessment Online Application** was developed in 2025 to allow **commercial customers** to seamlessly submit energy assessment requests
- Rebates for **Horticulture Lighting** were eliminated from the **Commercial Efficient Products Program**, which is a program that offers rebates to encourage eligible commercial customers to electrify frequently used electric equipment
- Measure rebates for **strategic measures** (i.e., weatherization) will be **prioritized over non-strategic measures**
- PSEG Long Island's Multi-Family portfolio includes the **New York State Homes and Community Renewal (HCR) Program**, a component of NYSERDA's Clean Energy Initiative, and it will be administered by LIPA in 2026

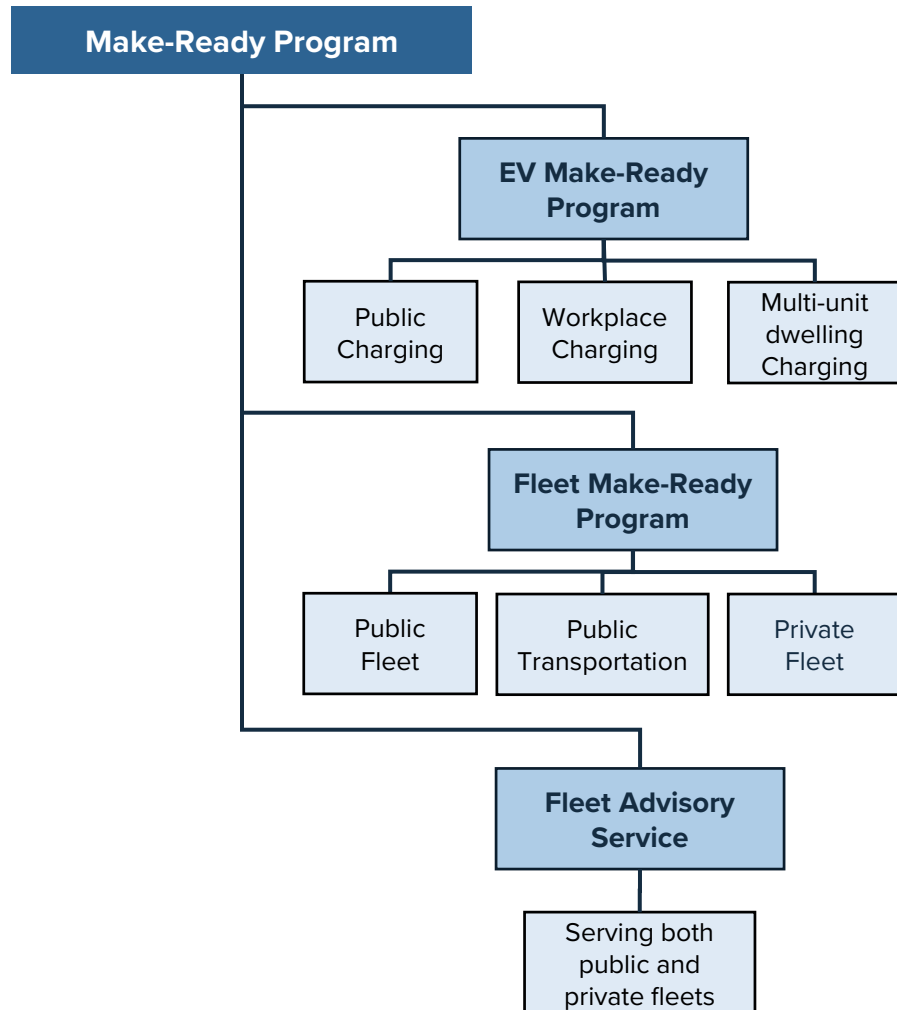




Transportation Electrification Updates



The Make-Ready Programs will request approximately **\$12.36 million** in O&M and **\$2.88 million** in Capital for 2026.



- The **EV Make-Ready Program** provides USMR and CSMR incentives to commercial businesses to install charging stations for public or private use:
 - **[UPDATE]** In 2026, the program will be updated based on a new LDV forecast, a lower total L2 port target (10,206) and a higher total DCFC port target (1,032), and plans to:
 - Transition its DCFC CSMR lease model to a cash rebate model
 - Adjust incentive cap to be based on \$ / port in June 2025
- The **Fleet Make-Ready Program** provides USMR and CSMR incentives to eligible fleet customers operating LDVs and MHDVs beginning in August 2024
 - **[UPDATE]** Based on program activity, PSEG Long Island plans to expand program eligibility to include private fleet customers from July 2025
- The **Fleet Advisory Service** provides service to both public and private fleet customers and has seen strong interest in participation
 - Will incorporate outcomes from the LIPA Fleet Electrification Study to enhance how we speak to fleet operators

EV Make-Ready Program L2 and DCFC port forecasts for 2025 - 2031 have decreased by 25% and increased by 32%, respectively, aligning with anticipated changes in the number of EVs on the road.

Figure 1. EV (LDV) Forecast Update (See Table 1 for Data)

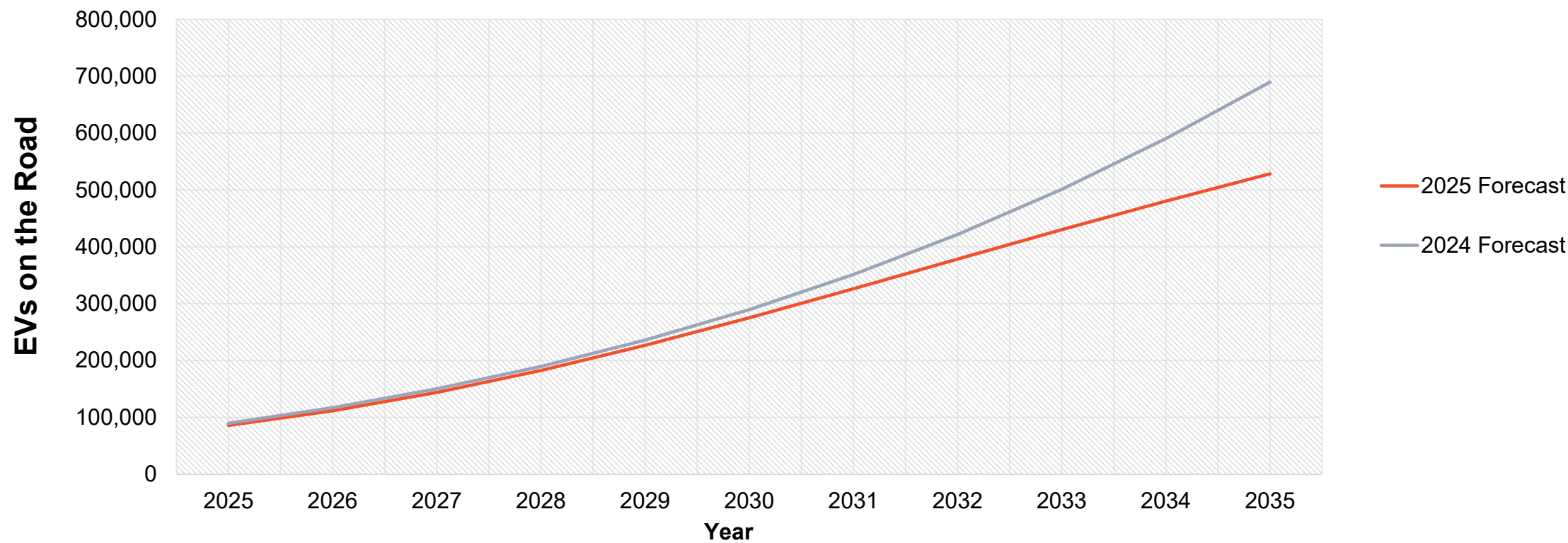


Table 1. EV (LDV) Forecast Update

EVs on the road (EOY)	2025	2026	2027	2028	2029	2030
2024 Forecast	89,749	117,124	150,225	189,623	235,889	289,592
2025 Forecast	85,938	111,690	143,939	182,536	226,698	275,112
% Change	-4.25%	-4.64%	-4.18%	-3.74%	-3.90%	-5.00%

Table 2. EV Make Ready Program Port Forecast (2025 Update)

EVMR Ports Forecast	2021	2022	2023	2024	2025	2026	2027	2028	2029	2030	2031	Totals		
	Actual	Actual	Actual	Actual	Forecast	Forecast	Forecast	Forecast	Forecast	Forecast	Forecast	Updated Forecast	Previous Forecast	% Change
L2	0	81	231	405	789	900	1,100	1,300	1,500	1,800	2,100	10,206	13,652	(25%)
DCFC	48	100	10	70	89	100	117	122	124	125	128	1,033	783	32%

The EV Program will request approximately **\$0.99 million** in O&M and **\$4.11 million** in Capital for 2026.

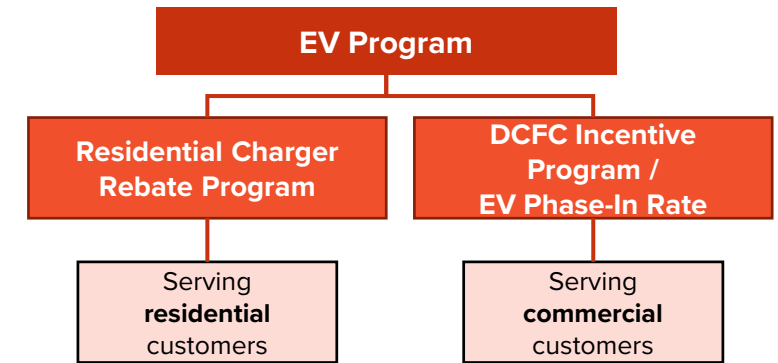


RESIDENTIAL OFFERING (RESIDENTIAL CHARGER REBATE):

- Cash rebate for Energy Star rated Level 2 chargers: **\$200 for non-DAC/LMI** and **\$300 for DAC/LMI** customers
- **[UPDATE]** In 2026, cash rebate for smart Level 2 chargers: **\$100 for non-DAC/LMI** and **\$400 for DAC/LMI** customers

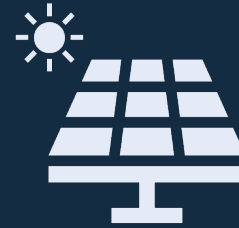
COMMERCIAL OFFERING:

- **[UPDATE] DCFC Incentive Program:** offers Demand Charge Rebate
 - To existing and new Rate 285 customers until October 2025;
 - To existing and new Rate 281 customers until January 2027
- **[UPDATE] The EV Phase-In Rate** will replace the existing DCFC Incentive Program and become available to:
 - Rate 285 customers in October 2025;
 - Rate 281 customers in January 2027

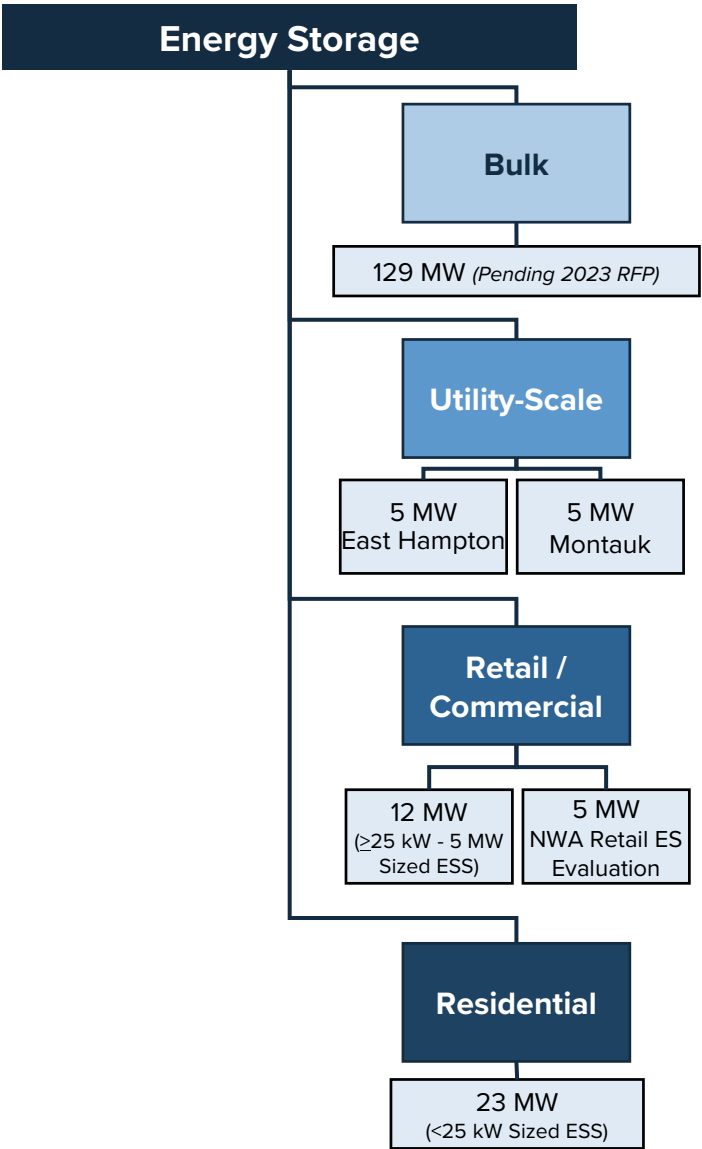




Demand Flexibility & DER Updates



The NWA Retail Energy Storage Evaluation requests **\$100,000** for 2026 to support RFP administration, pending the identification of viable circuit location(s).



- **Bulk**
 - Anticipate **two BESS** projects totaling **129 MW** to be in-service by the **end of 2028**
- **Utility-Scale**
 - As of 2019, PSEG Long Island has contracted for **two 5 MW FTM** energy storage systems one each in **East Hampton** and **Montauk**
- **Retail/Commercial**
 - The **Non-Wires Alternative (NWA) Retail Energy Storage Evaluation** is proposed for 2026 to evaluate viable circuit(s) on LIPA’s distribution system for a 5 MW, FTM ESS
- **Residential**
 - PSEG Long Island continues to manage NYSERDA’s **Residential Energy Storage System Incentive Program**
 - As of March 2025, Residential BTM ESS totals **23 MW**

PSEG Long Island's solar PV procurement efforts (**1,150+ MW DC**) have resulted in achievement of its 2025 CLCPA solar PV target (**750 MW DC**).



• Utility-Scale

- **200.2 MW** of Utility-Scale Solar connected through **RFPs** and **Feed-In-Tariff** programs
- As of May 2025, **12 MW** of solar PV has been executed across **4 PPAs**

• Distributed

- The **BTM Storage Plus Solar Program** (2019 – 2021) accounts for **500+ MW** of BTM solar generation
- Through **NY Sun Funding**, PSEG Long Island has received and approved **~8,500 new** BTM+ solar projects / year
- PSEG Long Island has completed and installed **over 90,000 net metering solar projects**

• Connected Buildings Pilot

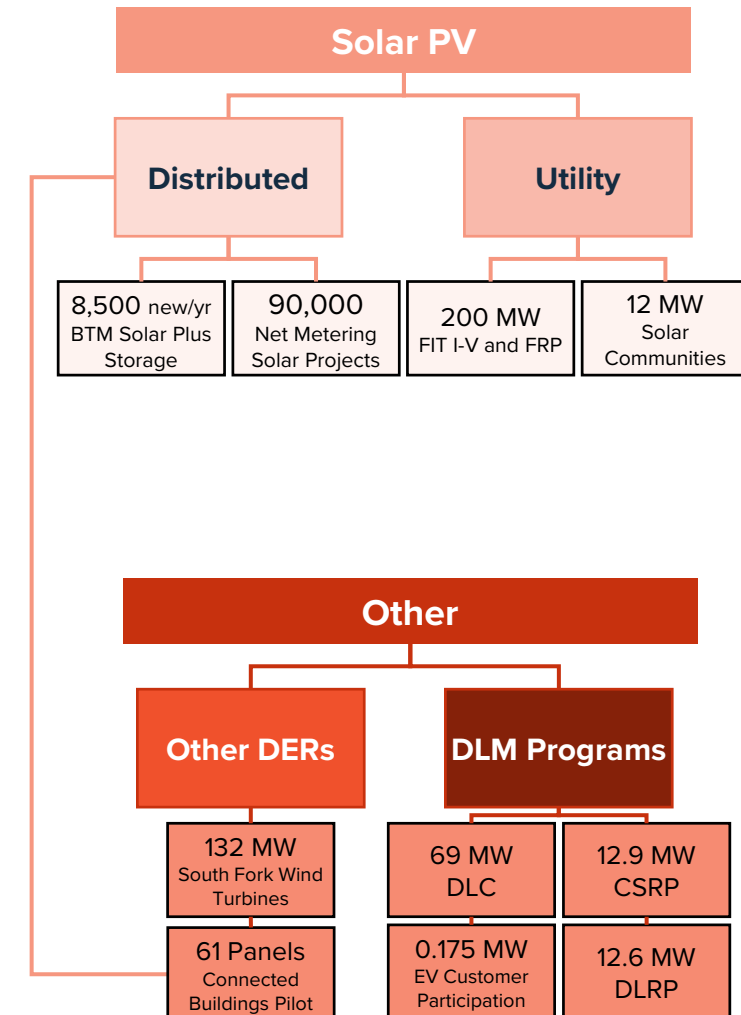
- **61 SPAN Smart Panels** have been installed and enable breaker-level monitoring of customer loads

• DLM Programs

- The **DLC** Program (*i.e.*, Smart Savers Program) is expected to bring **69 MW** of savings in 2025
- **CSRP** and **DLRP** (*i.e.*, System Peak Rewards Program) emulates NYISO DR programs, and are expected to provide **12.6 MW** of energy savings in 2025
- In 2025, PSEG Long Island is engaging **EV aggregators** in active managed charging through DLM programs to generate **175 kW** of forecasted savings in 2025

• Wind

- **12 turbines (132 MW)** in the South Fork Wind Farm generate power for up to **~70,000 LI homes**



Closing Remarks and Resources

vision

The **New York State Department of Public Service (DPS)** is seeking your **public comments** on PSEG Long Island's 2025 Utility 2.0 Plan and Building Efficiency & Electrification Plan.



Online Comments Form

Comments may be entered directly into the case via the www.dps.ny.gov website, by entering the associated matter number (14-01299) in the search option found on the homepage. After opening the case, enter comments in the "Post Comments" tab located at the top of the page.



First Class Mail

Your comments should refer to "**Matter Number 14-01299 – PSEG LI's Utility 2.0 and Building Efficiency & Electrification Plan**". Comments may be mailed and delivered to: Hon. Michelle L. Phillips, Secretary to the Commission New York State Public Service, Three Empire State Plaza, Albany, New York 12223-1350.



Email the DPS Secretary

Comments may be sent electronically to the DPS secretary at secretary@dps.ny.gov



Toll-free Opinion Line

Comments may also be submitted through the Department of Public Service's Opinion Line at **1-800-335-2120**. The number is designed to take comments about pending cases from in-state callers, 24 hours a day. Callers should press "2" to leave comments, mentioning PSEG Long Island's Utility 2.0 Plan.

Submit your comments by **08/21/2025** and reply comments by **09/05/2025**.

For more details, visit <https://www.dps.ny.gov/LongIsland>



Important Dates

08/21/2025
09/05/2025
By EOY 2025

Public Comments Due
Reply Comments Due
DPS Final Recommendation Letter issued to LIPA





 **Thank**
you

Dan Zaweski

Manager – Planning & Evaluation

Energy Efficiency and Renewables Department