

Electrification Guideline



PSEG Long Island is here to support your success

Whether you are planning to install an electric vehicle charging station or construct/renovate a building that will utilize heat pump technology for its primary heating source, PSEG Long Island is here to assist you. Reach out to us prior to new construction, service upgrades and more, for both commercial and residential.



If you are planning an increase in electric load, particularly greater than 300KVA, it is important to contact us at Building and Renovation Services as soon as possible. Construction and equipment lead times can affect when we will be able to accommodate your request,

which you may need to build into your overall project schedule.

Please include the full property address in the subject line of all requests to: pseglongislandbrsli@psegliny.com.

Our number one priority is always safety. PSEG Long Island has the experience and knowledge to help you successfully complete your job.

You may also call us at **1-844-341-6378**, Monday - Friday, from 7:30 AM to 4 PM.

Project Process

Once we review your request, we will:

- Provide a response as soon as possible, typically within three business days, with a project reference number
- Assign your job to a design planner
- Advance your job to a construction crew

We complete most requests in three to five weeks. Completion times vary based on factors including the complexity of the work and if the job is tied to a relevant PSEG Long Island program. Be sure to contact us early in the planning stages.

Interconnecting New Loads & Service Upgrades can be accessed here:

Requirements for New Loads

NEW < 320 AMPS

Application
Temporary Certificate

NEW > or = 400 AMPS

Application
Temporary Certificate
Load Letter

NEW > or = 600 AMPS

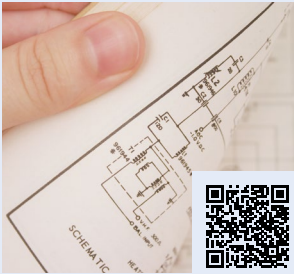
Application
Temporary Certificate
Load Letter
Site Plan
Planned Outage

New meters or services require an Electrical Inspection Certificate. If the service location is in the Rockaway Peninsula, you will need a NYC Building Permit. When available, please include pole/pad numbers.



Electrification Guideline

Additional services relate to any of the following:



Planned Outage request:

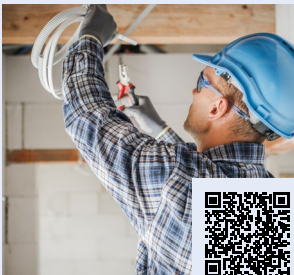
Equipment & Facility Relocation request:

Pool/Hot Tub

Clearance request:

Elevation request:

Demolition request:



Guidelines to ensure electrical compliance, safety and reliability



Consult our Red Book for electrical specifications & standards

Interconnecting Renewables & Power Generation

PSEG Long Island's Small Generator Interconnection Procedures ("SGIP") provide a framework for processing applications for interconnection to LIPA's Distribution System of new or modified distributed generation facilities such as renewables, energy storage, and other generation, with a nameplate rating of 10 MW or less aggregated on the customer side of the point of common coupling (PCC). PSEG Long Island maintains a web-based system for the SGIP application process.

After reviewing this document, you can submit your completed application package via our online portal prior to installation of the equipment for interconnection. The process requirements help to ensure the addition of the resource has no adverse impacts on safety, reliability and power quality:

- Application and planning
- Installation of equipment
- Inspections, testing and signoff



All equipment must meet the testing and certification requirements of New York State. You can find a listing of this equipment on the New York Public Service Commission's website.

Hosting Capacity Map

The Hosting Capacity Map is a tool available to solar, electric vehicle, and energy storage developers on Long Island. It provides guidance and general information about the current capacity on the LIPA Distribution System to support new projects in the above categories.

To learn more about interconnections or request access to the capacity map, go to *Small Generator Interconnection Procedures* at psegliny.com/rates.

